

SolarMax Energy Systems

5G power base station



Overview

Today we see that a major part of energy consumption in mobile networks comes from the radio base station sites and that the consumption is stable. We can also see that even in densely deployed networks.

5G power base station



Building better power supplies for 5G base stations

Building better power supplies for 5G base stations Authored by: Alessandro Pevere, and Francesco Di Domenico, both at Infineon Technologies Infineon Technologies - Technical ...

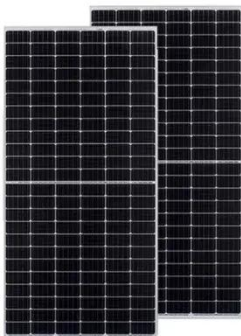
[Get a quote](#)

Optimal configuration for photovoltaic storage system capacity in 5G

Base station operators deploy a large number of distributed photovoltaics to solve the problems of high energy consumption and high electricity costs of 5G base stations. In this ...



[Get a quote](#)



A GaN-based Doherty Power Amplifier for 5G Basestation ...

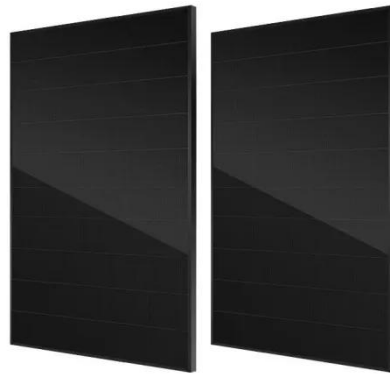
This paper presents a highly efficient and linear Doherty power amplifier targeting base station applications for the fifth-generation (5G) communication system

[Get a quote](#)

Why does 5g base station consume so much power and how to ...

5G base stations use high power consumption and high RF signals, which require more signal processing for digital and electromechanical units, and also put greater pressure ...

[Get a quote](#)



Selecting the Right Supplies for Powering 5G Base Stations

These tools simplify the task of selecting the right power management solutions for these devices and, thereby, provide an optimal power solution for 5G base stations components.

[Get a quote](#)

The 5G Dilemma: More Base Stations, More ...

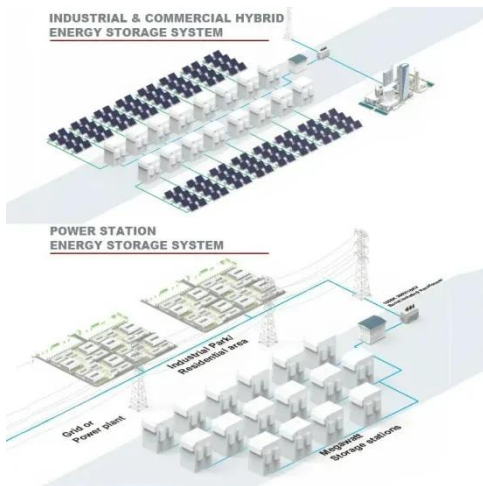
In both 4G and future 5G networks, operators will probably run their base stations so they transmit at the maximum power allowed by their ...

[Get a quote](#)



5G base stations use a lot more energy than 4G base stations: MTN

A typical 5G base station consumes up to twice or more the power of a 4G base



station, writes MTN Consulting Chief Analyst Matt Walker in a new report entitled " Operators ...

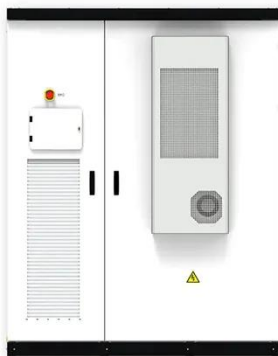
[Get a quote](#)

A technical look at 5G energy consumption and performance

To understand this, we need to look closer at the base station power consumption characteristics (Figure 3). The model shows that there is significant energy consumption in the ...



[Get a quote](#)



Selecting the Right Supplies for Powering 5G Base Stations

These tools simplify the task of selecting the right power management solutions for these devices and, thereby, provide an optimal power solution for 5G base stations components.

[Get a quote](#)

Front Line Data Study about 5G Power Consumption

The two figures above show the actual

power consumption test results of 5G base stations from different manufacturers, ZTE and HUAWEI, in Guangzhou and Shenzhen, by an anonymous ...

[Get a quote](#)



Why does 5g base station consume so much power ...

5G base stations use high power consumption and high RF signals, which require more signal processing for digital and electromechanical units, ...

[Get a quote](#)

Best Practices to Accelerate 5G Base Station ...

The 5G massive MIMO base station has arrived and carriers continue to ramp up deployments. The global demand for product with varying ...

[Get a quote](#)



Energy-efficiency schemes for base stations in 5G heterogeneous

In today's 5G era, the energy efficiency (EE) of cellular base stations is crucial for



sustainable communication. Recognizing this, Mobile Network Operators are actively prioritizing EE for ...

[Get a quote](#)

The power supply design considerations for 5G base stations

To understand how, consider the power amplifier (PA) and power supply unit (PSU) in the 5G New Radio (NR) gNodeB base station. In 2G, 3G and 4G, the PA and PSU were ...



[Get a quote](#)



Quick guide: components for 5G base stations and antennas

Base stations A 5G network base-station connects other wireless devices to a central hub. A look at 5G base-station architecture includes various equipment, such as a 5G ...

[Get a quote](#)

What is 5G base station architecture?

Architecting a 5G base station Your

design should take into account several challenges. Does your application depend more on distance or bandwidth capabilities - or a ...

[Get a quote](#)



Power Consumption Modeling of 5G Multi-Carrier Base ...

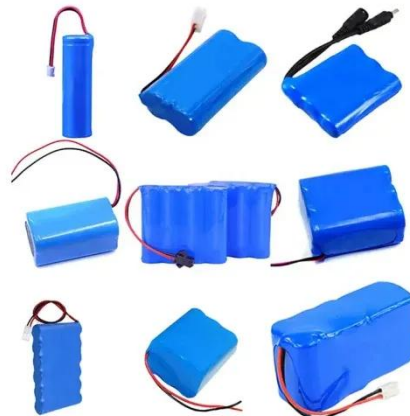
Importantly, this study item indicates that new 5G power consumption models are needed to accurately develop and optimize new energy saving solutions, while also considering the ...

[Get a quote](#)

Technical Requirements and Market Prospects of 5G Base Station ...

5G base station chips play a critical role in the construction of 5G networks. As technology continues to advance, base station chips will demonstrate higher performance and ...

[Get a quote](#)



5G base stations use a lot more energy than 4G base ...

A typical 5G base station consumes up

OEM service

Hot Colors:



Color can be customized
more questions just do not hesitate to contact us

LOGO Position: (Screen printing)



to twice or more the power of a 4G base station, writes MTN Consulting Chief Analyst Matt Walker in a ...

[Get a quote](#)

The power supply design considerations for 5G base ...

To understand how, consider the power amplifier (PA) and power supply unit (PSU) in the 5G New Radio (NR) gNodeB base station. In 2G, 3G ...



[Get a quote](#)



What is the Power Consumption of a 5G Base Station?

Ericsson has been able to innovate a 5G base station that consumes only 20% energy when the traffic is low compared to a normal setup. This achieves through advanced ...

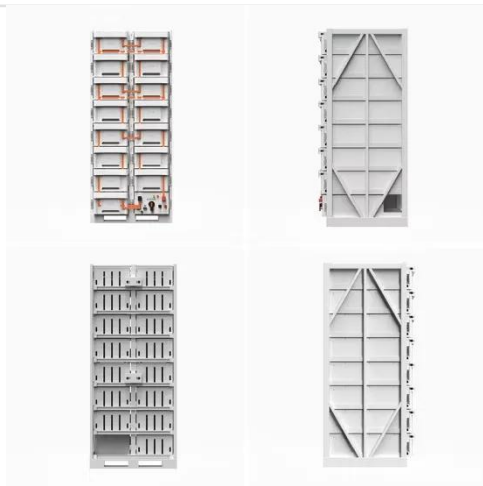
[Get a quote](#)

5G base stations and the challenge of thermal ...

Phase change 5G materials enhance the transfer of heat to heat sinks, which

allows the component to run at a lower temperature, minimizing ...

[Get a quote](#)



5G NR Base Station Classes: Type 1-C, Type 1-H, ...

Learn about the different classes of 5G NR base stations (BS), including Type 1-C, Type 1-H, Type 1-O, and Type 2-O, and their specifications.

[Get a quote](#)

A Power Consumption Model and Energy Saving Techniques for 5G ...

Aiming at minimizing the base station (BS) energy consumption under low and medium load scenarios, the 3GPP recently completed a Release 18 study on energy saving ...

[Get a quote](#)



Size, weight, power, and heat affect 5G base station designs

Engineers designing 5G base stations must contend with energy use, weight,



size, and heat, which impact design decisions. 5G New Radio (NR) uses Multi-User massive-MIMO ...

[Get a quote](#)

Contact Us

For catalog requests, pricing, or partnerships, please visit:
<https://zenius.co.za>