

## SolarMax Energy Systems

# Analysis of power consumption composition of 5G base stations



## Overview

---

Does a 5G base station have a power consumption model?

This paper proposes two modified power consumption models that would accurately depict the power consumption for a 5G base station in a standalone network and a novel routing protocol for distributing the load on the base stations in the case of intercellular communication.

Should power consumption models be used in 5G networks?

This restricts the potential use of the power models, as their validity and accuracy remain unclear. Future work includes the further development of the power consumption models to form a unified evaluation framework that enables the quantification and optimization of energy consumption and energy efficiency of 5G networks.

Is there a power consumption model for realistic 5G AAUs?

s.VI. CONCLUSIONS In this paper, we presented a novel power consumption model for realistic 5G AAUs, which builds on large data collection campaign. At first, we proposed an ANN architecture, which allows modelling  $\mu$ .

How can we improve the energy efficiency of 5G networks?

To improve the energy efficiency of 5G networks, it is imperative to develop sophisticated models that accurately reflect the influence of base station (BS) attributes and operational conditions on energy usage.

Is 5G more energy efficient than 4G?

Although the absolute value of the power consumption of 5G base stations is increasing, their energy efficiency ratio is much lower than that of 4G stations. In other words, with the same power consumption, the network capacity of 5G will be as dozens of times larger than 4G, so the power consumption per bit is sharply reduced.

Is artificial neural networks a good power consumption model for 5G AAUs?

In this paper, we present a power consumption model for 5G AAUs based on artificial neural networks. We demonstrate that this model achieves good estimation performance, and it is able to capture the benefits of energy saving when dealing with the complexity of multi-carrier base stations architectures.

## Analysis of power consumption composition of 5G base stations

---



### Exploring power system flexibility regulation potential

...

5G base stations (BSs) are potential flexible resources for power systems due to their dynamic adjustable power consumption. However, the ...

[Get a quote](#)

### 5G Base Stations: The Energy Consumption Challenge

Early deployments indicate that 5G base stations require 2.5-3.5 times more power compared to a 4G one. Moreover, C-band, i.e., 3.4 GHz to 4.2 GHz, is deemed as the most popular 5G ...

[Get a quote](#)



### Comparison of Power Consumption Models for 5G Cellular Network Base

Power consumption models for base stations are briefly discussed as part of the development of a model for life cycle assessment. An overview of relevant base station power ...

[Get a quote](#)

## Measurements and Modelling of Base Station Power Consumption under Real

Abstract Base stations represent the main contributor to the energy consumption of a mobile cellular network. Since traffic load in mobile networks significantly varies during a working or ...



[Get a quote](#)



## Front Line Data Study about 5G Power Consumption

Facebook Twitter LinkedIn The two figures above show the actual power consumption test results of 5G base stations from different manufacturers, ...

[Get a quote](#)

## An Analytical Energy Performance Evaluation Methodology for ...

The implementation of various base station (BS) energy saving (ES) features and the widely varying network traffic demand makes it imperative to quantitatively



[Get a quote](#)

## What is the Power Consumption of a 5G Base Station?



Why is 5G Power Consumption Higher?  
1. Increased Data Processing and Complexity These 5G base stations consume about three times the power of the 4G stations. ...

[Get a quote](#)

---

## Machine Learning and Analytical Power Consumption

...

roduce a new power consumption model for 5G active antenna units (AAUs), the highest power consuming component of a BS1 and in turn of a mobile network. I. particular, we present an ...



[Get a quote](#)



---

## Analysis of power consumption in standalone 5G network and

...

This paper proposes two modified power consumption models that would accurately depict the power consumption for a 5G base station in a standalone network and a novel ...

[Get a quote](#)

---

## Power Consumption Modeling of 5G Multi-Carrier Base Stations: ...

We demonstrate that this model achieves good estimation performance, and it is able to capture the benefits of energy saving when dealing with the complexity of multi-carrier ...

[Get a quote](#)



## A Power Consumption Model and Energy Saving Techniques for 5G ...

Aiming at minimizing the base station (BS) energy consumption under low and medium load scenarios, the 3GPP recently completed a Release 18 study on energy saving ...

[Get a quote](#)

## Front Line Data Study about 5G Power Consumption

The two figures above show the actual power consumption test results of 5G base stations from different manufacturers, ZTE and HUAWEI, in Guangzhou and ...

[Get a quote](#)



## Machine Learning and Analytical Power Consumption Models for 5G Base





In this article, we propose a novel model for a realistic characterization of the power consumption of 5G multi-carrier BSs, which builds on a large data collection campaign. ...

[Get a quote](#)

---

## AI-based energy consumption modeling of 5G base stations: an ...

The energy consumption of 5G networks is one of the pressing concerns in green communications. Recent research is focused towards energy saving techniques of base ...



[Get a quote](#)



---

## Distribution network restoration supply method considers 5G base

This work explores the factors that affect the energy storage reserve capacity of 5G base stations: communication volume of the base station, power consumption of the base ...

[Get a quote](#)

---

## Power consumption based on 5G communication



Abstract: At present, 5G mobile traffic base stations in energy consumption accounted for 60% ~ 80%, compared with 4G energy consumption increased three times. In the future, high-density ...

[Get a quote](#)



## Machine Learning and Analytical Power Consumption Models for ...

In this article, we propose a novel model for a realistic characterization of the power consumption of 5G multi-carrier BSs, which builds on a large data collection campaign. ...

[Get a quote](#)

## Front Line Data Study about 5G Power Consumption

The two figures above show the actual power consumption test results of 5G base stations from different manufacturers, ZTE and HUAWEI, in Guangzhou and Shenzhen, by an anonymous ...

[Get a quote](#)



## 5G Energy Efficiency Overview

Abstract It is a critical requirement for the future of 5G communication



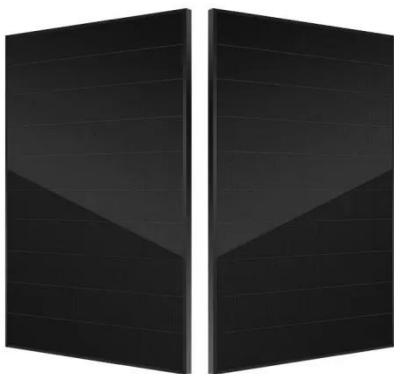
networks to provide high speed and significantly reduce network energy consumption. In the Fifth Generation (5G), ...

[Get a quote](#)

## Comparison of Power Consumption Models for 5G Cellular ...

Power consumption models for base stations are briefly discussed as part of the development of a model for life cycle assessment. An overview of relevant base station power ...

[Get a quote](#)



## Carbon emissions and mitigation potentials of 5G base station in ...

However, a significant reduction of ca. 42.8% can be achieved by optimizing the power structure and base station layout strategy and reducing equipment power consumption. ...

[Get a quote](#)

## An Analytical Energy Performance Evaluation Methodology for 5G Base

The implementation of various base station (BS) energy saving (ES) features and the widely varying network traffic demand makes it imperative to quantitatively

[Get a quote](#)



## ESS



## A Voltage-Level Optimization Method for DC Remote ...

Unlike the concentrated load in urban area base stations, the strong dispersion of loads in suburban or highway base stations poses ...

[Get a quote](#)

## Power consumption modeling of different base station types in

In this paper we developed such power models for macro and micro base stations relying on data sheets of several GSM and UMTS base stations with focus on component ...

[Get a quote](#)



## Empirical Analysis of Power Consumption in LTE Base ...

Abstract - This paper presents a comprehensive empirical study of



energy consumption within an operational urban LTE Radio Access Network (RAN). Using both site-level measurements and ...

[Get a quote](#)

---

## Modelling the 5G Energy Consumption using Real-world ...

...

To improve the energy efficiency of 5G networks, it is imperative to develop sophisticated models that accurately reflect the influence of base station (BS) attributes and operational conditions ...

[Get a quote](#)



---

## Final draft of deliverable D.WG3-02-Smart Energy Saving of ...

Change Log This document contains Version 1.0 of the ITU-T Technical Report on "Smart Energy Saving of 5G Base Station: Based on AI and other emerging technologies to forecast and ...

[Get a quote](#)

---

**Contact Us**

For catalog requests, pricing, or partnerships, please visit:  
<https://zenius.co.za>