

## SolarMax Energy Systems

# Azerbaijan 5G base station power outage



## Overview

---

What is a power outage?

An outage is specifically identified for practical implementation when the reference signal received power falls below a threshold, typically ranging from – 120 to – 140 dBm, within the coverage area of base stations.

How do you localize a network outage?

Once an outage is detected, (1c) localizes the outage by identifying the affected users (oUEs), served users (sUEs), and compensating base stations (cBS). Module 2 starts with (2a), determining whether the outage involves a single or multiple base stations. Based on the outage level, the appropriate compensation strategy is selected in (2b).

How are outage users divided between compensating base stations?

Outage users are divided equally among the compensating base stations based on proximity. The best possible compensating base station serves each outage user. Each cBS has its own set of sUEs, which, along with its assigned oUEs, form the set of cUEs. Each cBS uses its set of cUEs, JFI, and GM-assisted rewards for training.

## Azerbaijan 5G base station power outage

---



### Azerbaijan Goes Dark After Power Station Explodes

Officials said the blackout in the early hours of July 3 was due to an explosion at a hydroelectric power station in the northern city of Mingacevir. Heavy use of air-conditioning ...

[Get a quote](#)

---

### Azerbaijan Goes Dark After Power Station Explodes

Officials said the blackout in the early hours of July 3 was due to an explosion at a hydroelectric power station in the northern city of Mingacevir. ...

[Get a quote](#)

---



### Check network status

Let's check if there are any issues in your area. Where is the issue happening? Coverage © 2025 Ookla , © Mapbox © OpenStreetMap Improve this map , VZMap. Is this page helpful?

[Get a quote](#)

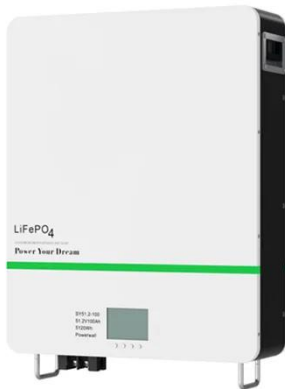
---

## Power outages, poor digital

## infrastructure could scupper 5G gains

By Ernest Bako WUBONTO As the country advances in embracing cutting-edge technology, addressing power supply issues and developing digital public infrastructure (DPI) ...

[Get a quote](#)



## 5G Micro Base Station Power Supply Solution , Reliable

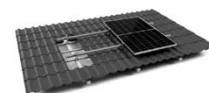
Sunergy Technology's 5G Micro Base Station Power Supply Solution ensures reliable backup power, rugged durability, and fast deployment for 5G networks. With expandable battery ...

[Get a quote](#)

## Countrywide Power Outage Reported In Azerbaijan

Power was cut off in most districts of Baku and 35-40 percent of Azerbaijani regions from 7 a.m. (local time) after lightning struck Mingachevir power plant, which supplies ...

[Get a quote](#)



TILE ROOF SOLAR MOUNTING SYATEM



STANDING SEAM ROOF SYATEM



ADJUSTABLE TILT FLAT ROOF SYATEM



TRIANGLE FLAT ROOF SYATEM

## Azerbaijan hit by worst power blackout since collapse ...

Azerbaijan has been hit by a massive blackout affecting most of the country in the worst power outage since the 1991



collapse of the Soviet Union.

[Get a quote](#)

## Azerbaijan hit by worst power blackout since collapse of Soviet ...

Azerbaijan has been hit by a massive blackout affecting most of the country in the worst power outage since the 1991 collapse of the Soviet Union.

[Get a quote](#)



## Hybrid Cell Outage Compensation in 5G Networks: ...

In this paper, we present a novel cell outage compensation (COC) framework to mitigate the effect of the failure of any outdoor Base Station (BS) ...

[Get a quote](#)

## Next-Generation Base Stations: Deployment, Disaster ...

Base stations rely on the urban power

grid. To maintain service during outages:  
Uninterruptible Power Supply (UPS)  
systems offer a few ...

[Get a quote](#)



## **Hierarchical regulation strategy based on dynamic clustering for**

The accuracy of regulation and utilization of the regulable potential are ensured by the dynamic clustering. Abstract Utilizing the backup energy storage potential of 5G base ...

[Get a quote](#)

## **Data-Driven Intelligent Outage Management for High ...**

Abstract--In the evolving landscape of 5G and forthcoming 6G networks, managing outages becomes increasingly complex due to higher Base Station (BS) densities and the conse-quent ...

[Get a quote](#)



## **AI-Powered Resilience: A Dual-Approach for Outage**

As 5G evolves to 6G, network



management faces growing challenges with increasing base station density, leading to more frequent outages. To address this, we ...

[Get a quote](#)

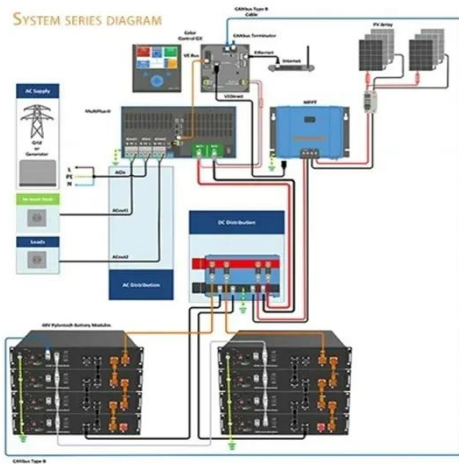


## Quick guide: components for 5G base stations and antennas

Base stations A 5G network base-station connects other wireless devices to a central hub. A look at 5G base-station architecture includes various equipment, such as a 5G ...



[Get a quote](#)



## Why 5G cell towers go down when there is power outage? Does it

Say there's a power outage during extreme weather or maintenance events. Cell towers have batteries and backup generators that run on diesel, propane. However, they don't ...

[Get a quote](#)

## The Generator Distribution Problem for Base Stations during

This repository contains the data for paper titled "The Generator Distribution Problem for Base Stations during Emergency Power Outage: A branch-and-price-and-cut approach".

[Get a quote](#)



## Backup Battery Analysis and Allocation against Power Outage for

The limited numbers and capacities of batteries, however, can hardly sustain a long power outage without a well-designed allocation strategy. As a result, the service interruption ...

[Get a quote](#)

## Backup Battery Analysis and Allocation against Power Outage for

Battery groups are installed as backup power in most of the base stations in case of power outages due to severe weathers or human-driven accidents, particularly in remote areas.

[Get a quote](#)



## Blackout in Azerbaijan: how it happened, who is to blame and

...





The AzerEnerji power company explained that the blackout was caused by overheating at the Azerbaijan Thermal Power Plant (TPP) in Mingachevir. Cooling fans failed ...

[Get a quote](#)

---

## Kyocera develops AI-powered 5G virtualized base station for the

Features of Kyocera's 5G virtualized base station 1. AI-powered base station functionality Using AI, the system dynamically manages traffic congestion and optimizes ...



[Get a quote](#)



## (PDF) Base Station ON-OFF Switching in 5G Wireless

To achieve the expected 1000x data rates under the exponential growth of traffic demand, a large number of base stations (BS) or access points (AP) will be deployed in the ...

[Get a quote](#)

---

## Next-Generation Base Stations: Deployment, Disaster

Base stations rely on the urban power grid. To maintain service during outages: Uninterruptible Power Supply (UPS) systems offer a few minutes of bridge power. Battery units ...

[Get a quote](#)



## OpenCelliD

OpenCelliD is the largest Open Database of Cell Towers & their locations. You can geolocate IoT & Mobile devices without GPS, explore Mobile Operator coverage and more!

[Get a quote](#)



## Cellular Tower and Signal Map

Setting a DAS to any other type will restore the main tower and delete the individual DAS elements. CellMapper is a crowd-sourced cellular tower and coverage mapping service.

[Get a quote](#)



## Contact Us

For catalog requests, pricing, or partnerships, please visit:  
<https://zenius.co.za>