

SolarMax Energy Systems

Base station communication battery uses 12V



Overview

A 12V LiFePO₄ battery has a nominal voltage of 12V, which aligns well with many communication devices designed to operate within this voltage range. The LiFePO₄ chemistry offers several benefits in terms of voltage stability.

Base station communication battery uses 12V



Types of Batteries Used in Telecom Systems: A Guide

Another alternative is the sodium-sulfur (NaS) battery. Known for their high efficiency and long cycle life, NaS batteries can operate at elevated ...

[Get a quote](#)

Types of Batteries Used in Telecom Systems: A Guide

Another alternative is the sodium-sulfur (NaS) battery. Known for their high efficiency and long cycle life, NaS batteries can operate at elevated temperatures, which ...



[Get a quote](#)



What do you use for a external battery on a R12 ...

I've had a few different setups over the years but haven't looked back since going with a small 40w solar panel and 60ah 12v battery for portable base stations.

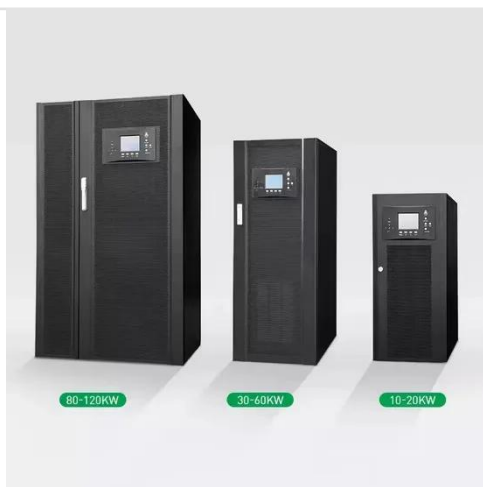
[Get a quote](#)

VRLA Telecom Batteries: A

Complete Guide for Reliable Communication

4 days ago· From mobile base stations to core switching centers, every component requires a reliable and stable power supply. Among the different options available, VRLA telecom ...

[Get a quote](#)



External Bioenno Medium 12v Battery Kit, P/N: BLF-1215AS

External Bioenno Medium Battery Kit
This includes: 1 - External Bioenno 12v Medium Battery P/N: BLF-1215AS 180 Watt Hours With a 36 Hour Run Time 6 x 4 x 3.8 inch Battery Charger Power ...

[Get a quote](#)

NEXEO , HDX(TM) Crew Communication Platform QUICK ...

The base station mounting height should be 5 feet (1.52 m), see Fig. 1.1. Choosing a good RT7000 (transceiver) mounting location is critical (see Step 5, Fig. 1.3, 1.4, and Component ...

[Get a quote](#)



Portable Lithium Backup Batteries for Ham Radio

Reliable 12V LiFePO4 lithium batteries



for ham radio, communication systems.
The Best portable battery backup for emergencies, versatile outdoor use.

[Get a quote](#)

Presentation title on multiple lines

Qi 5W monolithic wireless power transmitter (Tx) STEVAL-WBC86TX monolithic wireless power transmission evaluation board, based on Qi protocol, is very suitable for wearable, e-cigarette, ...



[Get a quote](#)



Selection and maintenance of batteries for communication base stations

This paper focuses on the engineering application of battery in the power supply system of communication base stations, and focuses on the selection, installation and maintenance of ...

[Get a quote](#)

High Power Lithium Battery 12V 600ah for Solar ...

We have more 30 types of cells, and could make OEM battery pack from 12V-800V, 10-1000ah, which can be used in electric vehicle, E-bike, UPS, energy ...

[Get a quote](#)



Understanding Backup Battery Requirements for ...

Telecom base stations require reliable backup power to ensure uninterrupted communication services. Selecting the right backup battery is ...

[Get a quote](#)

Base station UPS?

The thread on a "grid-down" cross-country communication relay got me thinking about methods of powering a base station during a power outage. Is anyone running a UPS or ...

[Get a quote](#)



How to use a Mobile CB or Ham Radio and a Base Station

Power your mobile ham radio as a base station with Fleetwood Digital. Learn about proper 12-volt DC power supply

needs and dedicated power supply options for reliable mobile ...

[Get a quote](#)



Understanding Backup Battery Requirements for Telecom Base Stations

Telecom base stations require reliable backup power to ensure uninterrupted communication services. Selecting the right backup battery is crucial for network stability and ...

[Get a quote](#)



Choosing a 12V Battery for Your Mobile Base Station

While any 12V car battery might technically power your mobile base station, selecting the right battery for optimal performance and longevity requires understanding a few key factors.

[Get a quote](#)

How to use a Mobile CB or Ham Radio and a Base ...

Power your mobile ham radio as a base station with Fleetwood Digital. Learn about proper 12-volt DC power supply needs and dedicated ...

[Get a quote](#)



Selection and maintenance of batteries for communication base ...

This paper focuses on the engineering application of battery in the power supply system of communication base stations, and focuses on the selection, installation and maintenance of ...

[Get a quote](#)

Lifepo4 communication base station battery

Get the bestselling lifepo4 communication base station battery on Alibaba at unrivaled discounts and enjoy high-performance output. The lifepo4 communication base station battery ...

[Get a quote](#)



What Makes 12V Telecom Batteries Essential for Modern ...



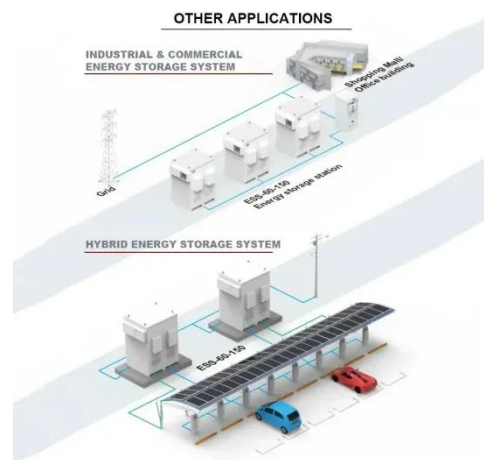
12V telecom batteries use deep-cycle technology to deliver consistent power over extended periods. They integrate with power management systems to automatically activate ...

[Get a quote](#)

What are base station energy storage batteries used for?

Rapid deployment of emergency communication systems is often needed during disasters. Batteries provide the necessary power to re ...

[Get a quote](#)



12V 135ah Deep Cycle Float Backup Battery for Telecom Communication

12V 135ah Deep Cycle Float Backup Battery for Telecom Communication Base Station, Find Details and Price about Lead Acid Battery Deep Cycle Replacement Battery from 12V 135ah ...

[Get a quote](#)

what kind of power supplies do you guys use for base station

I have an old lawn mower battery with a harbor freight float charger. Keeps it at a

constant 13.3 volts and tons of on-demand super clean power. You also have the benefit of having radio ...

[Get a quote](#)



Can a 12V LiFePO4 battery be used in a communication device?

To determine if a 12V LiFePO4 battery can be used in a communication device, we first need to understand the technical requirements of both the battery and the device. Communication ...

[Get a quote](#)

12V Lithium Ion Battery for Powering Remote Communication ...

This article explores the role of 12V lithium ion batteries in powering remote communication systems, providing reliable and efficient energy storage solutions for ...

[Get a quote](#)



What Makes 12V Telecom Batteries Essential for Modern Communication?



12V telecom batteries use deep-cycle technology to deliver consistent power over extended periods. They integrate with power management systems to automatically activate ...

[Get a quote](#)

What are base station energy storage batteries used for?

Rapid deployment of emergency communication systems is often needed during disasters. Batteries provide the necessary power to re-establish communication networks ...

[Get a quote](#)



Emergency/Backup Power for Ham Stations

Generator Equipment to be plugged-in (Extension chord?) Power Supplies to operate 12V equipment Maintain generator (gas, oil, etc.) Battery (Indoor or Outdoor) Use 12V directly vice ...

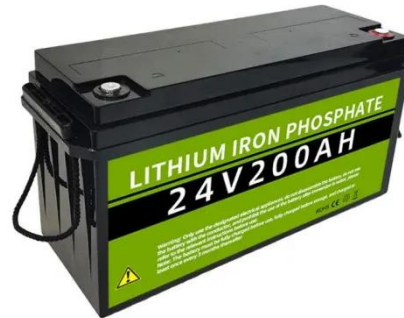
[Get a quote](#)

Can a 12V LiFePO4 battery be used in a ...

To determine if a 12V LiFePO4 battery can be used in a communication device, we first need to understand the technical

requirements of both the battery and ...

[Get a quote](#)



48V 100Ah

Exploring the 12V Front Terminal Battery for Telecommunication ...

Mobile Base Stations: Mobile base stations require a reliable power supply to ensure seamless communication. 12V front terminal batteries can be used as a backup power ...

[Get a quote](#)

Contact Us

For catalog requests, pricing, or partnerships, please visit:
<https://zenius.co.za>