

## SolarMax Energy Systems

# Base station lithium-ion battery communication base station battery protection measures



## Overview

---

Critical aspects include battery chemistry, capacity, cycle life, safety features, thermal management, and intelligent battery management systems. These factors collectively guarantee stable, efficient, and secure backup power for telecom infrastructure. Why do telecom base stations need a battery management system?

As the backbone of modern communications, telecom base stations demand a highly reliable and efficient power backup system. The application of Battery Management Systems in telecom backup batteries is a game-changing innovation that enhances safety, extends battery lifespan, improves operational efficiency, and ensures regulatory compliance.

Why do telecom base stations need backup batteries?

Backup batteries ensure that telecom base stations remain operational even during extended power outages. With increasing demand for reliable data connectivity and the critical nature of emergency communications, maintaining battery health is essential.

Which battery is best for telecom base station backup power?

Among various battery technologies, Lithium Iron Phosphate (LiFePO<sub>4</sub>) batteries stand out as the ideal choice for telecom base station backup power due to their high safety, long lifespan, and excellent thermal stability.

What is a telecom battery backup system?

A telecom battery backup system is a comprehensive portfolio of energy storage batteries used as backup power for base stations to ensure a reliable and stable power supply. As we are entering the 5G era and the energy consumption of 5G base stations has been substantially increasing, this system is playing a more significant role than ever before.

What is a telecom base station?

Telecom base stations are strategically distributed across urban, suburban, and remote locations to provide uninterrupted wireless service. These stations depend on backup battery systems to maintain network availability during power disruptions.

What makes a telecom battery pack compatible with a base station?

**Compatibility and Installation Voltage Compatibility:** 48V is the standard voltage for telecom base stations, so the battery pack's output voltage must align with base station equipment requirements. **Modular Design:** A modular structure simplifies installation, maintenance, and scalability.

## Base station lithium-ion battery communication base station batter



### Battery technology for communication base stations

In order to ensure the reliability of communication, 5G base stations are usually equipped with lithium iron phosphate cascade batteries with high energy density and high charge and ...

[Get a quote](#)

### Optimization of Communication Base Station Battery ...

In the communication power supply field, base station interruptions may occur due to sudden natural disasters or unstable power supplies. This ...



[Get a quote](#)

#### DETAILS AND PACKAGING



1 USER MANUAL PDF 2 RJ45 Cable For RS485/CAN 3 Battery in Parallel Cables  
4 RJ45 TO USB Monitor Cable 5 M8 Terminal\*4

### Lithium-ion Battery For Communication Energy Storage System

With their small size, lightweight, high-temperature performance, fast recharge rate and longer life, the lithium-ion battery has gradually replaced the traditional lead-acid battery ...

[Get a quote](#)

## Lithium battery is the magic weapon for ...

Intelligent energy storage lithium battery can effectively protect the base station battery in the event of the accidental short circuit, lightning shock, ...

[Get a quote](#)



## Telecom Base Station Backup Power Solution: Design Guide for ...

Designing a 48V 100Ah LiFePO4 battery pack for telecom base stations requires careful consideration of electrical performance, thermal management, safety protections, and ...

[Get a quote](#)

## Overview of Telecom Base Station Batteries

Definition Telecom base station battery is a kind of energy storage equipment dedicatedly designed to provide backup power for telecom base stations, ...

[Get a quote](#)



## What Are the Critical Aspects of Telecom Base Station Backup ...

Telecom base station backup batteries



are essential for ensuring uninterrupted communication by providing reliable, long-lasting power during outages. Critical aspects ...

[Get a quote](#)

## Communication base station battery

Get the bestselling communication base station battery on Alibaba at unrivaled discounts and enjoy high-performance output. The communication base station battery are durable to ensure ...

[Get a quote](#)



## Communication Base Station Energy Storage Lithium Battery ...

Quick Q& A Table of Contents Infograph  
Methodology Customized Research Key  
Government Policies Driving Lithium  
Battery Adoption in Communication Base  
Station Energy Storage ...

[Get a quote](#)

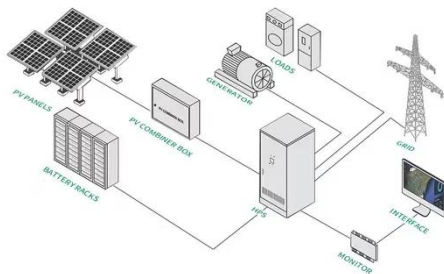
## 5.12kWh Base Station Battery 51.2V 100Ah LiFePO4 ...

Features: Connected with up to 10

batteries in Parallel (Max. 51.2KW) No memory effect batteries Low temperature charging cut-off protection.

...

[Get a quote](#)



## Telecom Battery Backup System , Sunwoda Energy

A telecom battery backup system is a comprehensive portfolio of energy storage batteries used as backup power for base stations to ensure a reliable and stable power supply.

[Get a quote](#)

## Battery Energy Storage Systems: Main Considerations for Safe

Battery Energy Storage Systems, or BESS, help stabilize electrical grids by providing steady power flow despite fluctuations from inconsistent generation of renewable ...

[Get a quote](#)



## Communication Base Station Li-ion Battery Market

Key Drivers Accelerating Li-ion Battery



Adoption in Communication Base Stations The transition to lithium-ion (Li-ion) batteries in communication base stations is propelled by operational ...

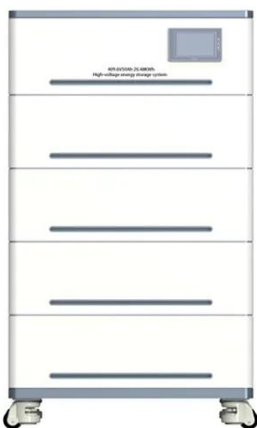
[Get a quote](#)

## Lithium battery solution for power supply guarantee system of

The power supply guarantee system for base stations, with its new energy lithium batteries featuring high energy density, light weight, long cycle life and environmental ...



[Get a quote](#)



## Understanding Backup Battery Requirements for Telecom Base Stations

Telecom base stations require reliable backup power to ensure uninterrupted communication services. Selecting the right backup battery is crucial for network stability and ...

[Get a quote](#)

## ?MANLY Battery?Lithium batteries for communication base stations ...



In general, as the demand for 5G communication base stations continues to increase, there will be considerable market space for lithium battery energy storage in the ...

[Get a quote](#)



## BMS for Telecom Base Station BES-01

With robust design and diagnostics, it maintains efficient and safe operation of your lithium-ion batteries. The MOKOEnergy telecom BMS delivers the intelligent battery management needed ...

[Get a quote](#)

## Telecom Base Station Backup Power Solution: Design ...

Designing a 48V 100Ah LiFePO4 battery pack for telecom base stations requires careful consideration of electrical performance, thermal ...

[Get a quote](#)



## Understanding Backup Battery Requirements for ...

Telecom base stations require reliable backup power to ensure uninterrupted



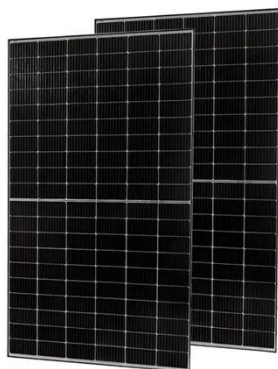
communication services. Selecting the right backup battery is ...

[Get a quote](#)

## Huawei 48V100AH lithium iron phosphate battery ...

Jan 12, 2022 Huawei 48V100AH lithium iron phosphate battery ESM-48100 communication room base station communication power supply Basic ...

[Get a quote](#)



## BMS for Telecom Base Station BES-01

With robust design and diagnostics, it maintains efficient and safe operation of your lithium-ion batteries. The MOKOEnergy telecom BMS delivers the ...

[Get a quote](#)

## Lithium battery is the magic weapon for communication base station

Intelligent energy storage lithium battery can effectively protect the base station

battery in the event of the accidental short circuit, lightning shock, and other conditions, timely ...

[Get a quote](#)



**18650** 3.7V  
Li-ion  
RECHARGEABLE BATTERY  
**2000mAh**



## Optimal configuration of 5G base station energy storage ...

The high-energy consumption and high construction density of 5G base stations have greatly increased the demand for backup energy storage batteries. To maximize overall ...

[Get a quote](#)

## Battery Management Systems for Telecom Base Backup Batteries

To ensure continuous operation during power outages or grid fluctuations, telecom operators deploy robust backup battery systems. However, the efficiency, reliability, and safety ...

[Get a quote](#)



## Contact Us

For catalog requests, pricing, or partnerships, please visit:

<https://zenius.co.za>