

SolarMax Energy Systems

**Base station power output
refers to**



Overview

Output power of the Base Station is the mean power delivered to a load with resistance equal to the nominal load impedance of the transmitter. What is the output power of a base station?

Output power of the Base Station is the mean power delivered to a load with resistance equal to the nominal load impedance of the transmitter. The maximum total output power, P_{max} , of the Base Station is the mean power level measured at the antenna connector during the transmitter ON period in a specified reference condition.

How much power does a base station need?

There is no general maximum output power requirement for base stations. As mentioned in the discussion of base-station classes above, there is, however, a maximum power limit of 24 dBm output power for Local Area base stations and of 20 dBm for Home base stations, counting the power over all antennas.

What is the maximum base station Power?

Maximum base station power is limited to 24 dBm output power for Local Area base stations and to 20 dBm for Home base stations, counting the power over all antennas (up to four). There is no maximum base station power defined for Wide Area base stations.

What is the main output power requirement?

The main output power requirement is on the output power accuracy. The output power of the base station is declared by the vendor. 3GPP conformance requirements state that the base station must be capable of achieving the declared power to within an allowed accuracy.

What is the output power limit for a wide-area base station?

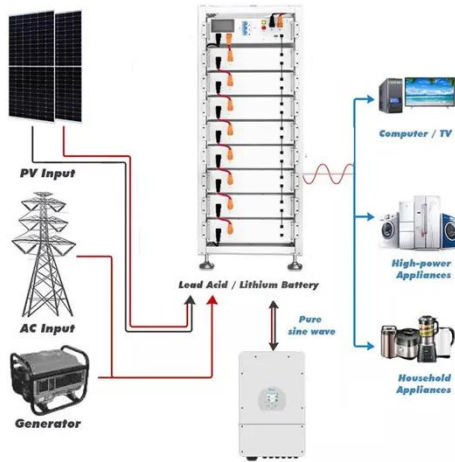
There is no output power limit specified for the wide-area base station class, but for other base station classes output power restrictions are specified due

to the need for ensuring co-existence between different operators and/or heterogeneous deployment layouts operating in the same geographical area.

What type of generator does a base station use?

The air conditioning of the base station runs at 220 VAC. These base stations can be powered by two types of diesel generators. The first is the conventional type where 220 VAC is converted to 48 VDC to charge the batteries and power the communication equipment.

Base station power output refers to



Base stations and networks

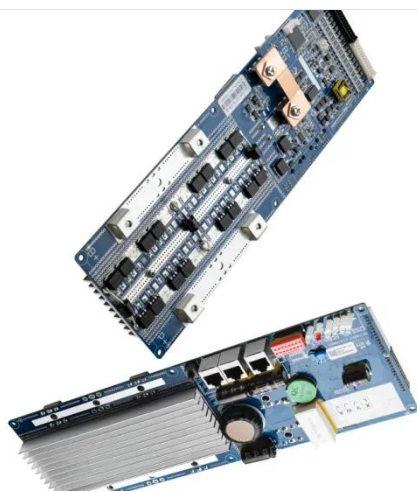
Base station antennas are installed in such a way that radio-wave exposure in public areas is well below the established safety limits. Mobile phones and other mobile devices require a network ...

[Get a quote](#)

Base stations and networks

Base station output power is relatively low The antenna output power level is typically between 20 watts and a few hundred watts for an outdoor base station. Television transmitters, by ...

[Get a quote](#)



6.2 Maximum output power - TechSpec

In normal conditions, the base station maximum output power shall remain within +2 dB and -2 dB of the manufacturer's rated output power. In extreme conditions, the base station maximum ...

[Get a quote](#)

6.2 Base station output power

- TechSpec

Output power, P_{out} , of the base station is the mean power of one carrier delivered to a load with resistance equal to the nominal load impedance of the transmitter. Rated total output power of ...

[Get a quote](#)



Key Factors Affecting Power Consumption in Telecom ...

Today we will analyze the factors affecting the power consumption of base stations from theory and practice for your reference. The larger the ...

[Get a quote](#)

Key Factors Affecting Power Consumption in Telecom Base Stations

Today we will analyze the factors affecting the power consumption of base stations from theory and practice for your reference. The larger the coverage area of the BTS, the ...

[Get a quote](#)

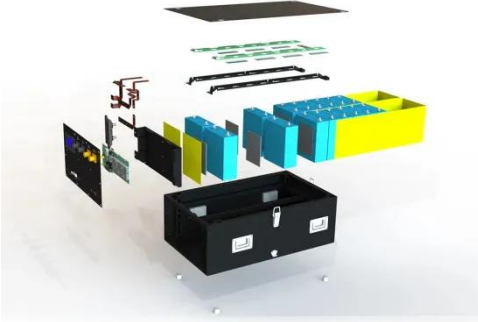


5G NEW RADIO CONDUCTED BASE STATION ...

The RE power control dynamic range is the difference between the power of an

RE and the average RE power for a BS at maximum carrier output power ($P_{max,c,TABC}$, or $P_{max,c,AC}$) ...

[Get a quote](#)



5G Base Station

The main energy consumption of 5G base stations is concentrated in the four parts of base station, transmission, power supply and computer room air conditioner, and the ...

[Get a quote](#)



Base Station Class

Base station classes refer to the categorization of base stations into wide area, medium range, and local area types, each defined by specific RF requirements and deployment scenarios, ...

[Get a quote](#)



Power flow in the Base Station. , Download Scientific ...

For a device X, the power consumed by X is denoted P_X and its efficiency is denoted η_X . The notation P_X in and P_X

out refers to the input and output ...

[Get a quote](#)



Mobile Phone Base Stations EMF / Health Fact Pack

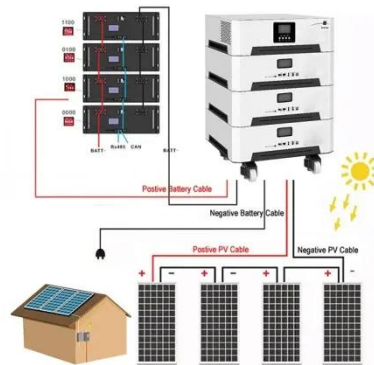
Typically transmitted power from an outdoor base station may range from a few watts to about 100 watts; while the output power of indoor base stations is even lower. For comparison purposes, ...

[Get a quote](#)

6.2 Base Station output power - TechSpec

The maximum total output power, P_{max} , of the Base Station is the mean power level measured at the antenna connector during the transmitter ON period in a specified reference condition.

[Get a quote](#)

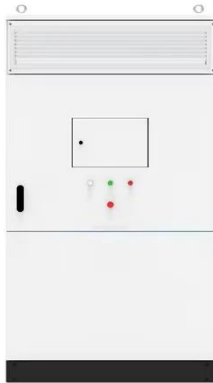


Two-Way Radio Power Output for Longer Range

The power output of a two-way radio measured in watts serves as a crucial determinant of its communication range.

FM radio stations often announce ...

[Get a quote](#)



What is the Difference Between Input and Output Wattage: A

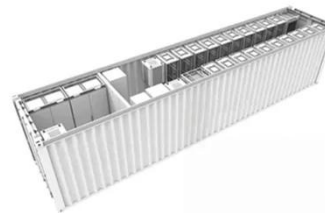
Final Verdict In conclusion, understanding the difference between input and output wattage is crucial for making informed decisions when it comes to purchasing and using ...

[Get a quote](#)



 TAX FREE

1-3MWh
BESS



Power flow in the Base Station. , Download Scientific Diagram

For a device X, the power consumed by X is denoted P_X and its efficiency is denoted η_X . The notation P_X^{in} and P_X^{out} refers to the input and output power of the device X. N A

[Get a quote](#)

tic30105 question 6 20 marks a base station transmits a power ...

A base station transmits a power of 10W into a feeder cable with a loss of 10dB. The transmitting antenna has a gain of 12dBi (dBi refers to an isotropic antenna) in the direction of a mobile ...

[Get a quote](#)



Energy Output: Measuring the Power Produced

Energy output refers to the total electrical energy generated or supplied by a system, typically measured in watts, kilowatts, or kilowatt-hours. ...

[Get a quote](#)

Power Base Station

Maximum base station power is limited to 24 dBm output power for Local Area base stations and to 20 dBm for Home base stations, counting the power over all antennas (up to four).

[Get a quote](#)



(PDF) Calculation of the Mean Output Power of Base ...

In this paper we calculate the distribution of output power of traffic channels of base station in GSM network

depending on the traffic load. The ...

[Get a quote](#)



Ensure Your Base Station Transmitter Complies with 5G NR ...

Output power, output power dynamics, transmit on / off power, transmit signal quality, unwanted emissions, and transmitter intermodulation are among the list of transmitter characteristics and

...

[Get a quote](#)



Optimize Signal Quality In 5G Private Network Base Stations

Some key tests include output power, output power dynamics, transmit ON / OFF power, transmit signal quality, unwanted emissions, and transmitter intermodulation. Therefore, it is essential

...

[Get a quote](#)

Base Stations Options & Accessories

Power Management System The comprehensive power management system provides the ability to automatically switch between AC and DC input power, to move to battery operation in the ...

[Get a quote](#)



5G Base Station Antenna: A Comprehensive Guide to Choosing ...

With the emergence of 5G networks, choosing the right 5G base station antenna is more important than ever. This guide provides a deep dive into everything you need to know about ...

[Get a quote](#)

Contact Us

For catalog requests, pricing, or partnerships, please visit:
<https://zenius.co.za>