

SolarMax Energy Systems

**Can a 12v lithium battery be
directly connected to an
inverter**



Overview

Yes, you can hook a power inverter directly to a battery. Ensure the inverter's power rating is compatible with the battery's capacity. This connection supplies reliable power to your vehicle. Always prioritize safety and check the current draw to prevent any damage to the starting battery. Do inverters and batteries need to match?

The inverter and batteries must match in terms of voltage, capacity, and power output. If you are using a 12V battery, then the input voltage of the inverter must match the battery voltage. If the specifications of the battery and the inverter do not match, the system will not operate stably and may even damage the equipment.

Should you use a lithium-ion battery for a home inverter?

A lithium-ion battery for a home inverter can significantly enhance your home's energy storage capabilities. This translates to more reliable power during outages and better management of renewable energy resources like solar panels. Lithium-ion batteries require less maintenance and have a longer lifespan compared to traditional batteries.

Can a 12V battery be used as an inverter?

If you are using a 12V battery, then the input voltage of the inverter must match the battery voltage. If the specifications of the battery and the inverter do not match, the system will not operate stably and may even damage the equipment. In addition, choose the right inverter power and battery capacity for your home or commercial needs.

Can a solar inverter be used with a lithium battery?

Integrating a solar inverter with a lithium battery can take your renewable energy setup to the next level. This combination allows for better energy storage, improved efficiency, and greater resilience during power outages. LiFePO4 batteries are particularly well-suited for solar applications because their thermal stability and long cycle life.

Do inverters need to be connected to batteries?

Connecting inverters to batteries is an important part of an off-grid power solution or backup power system, and the right connections ensure that the system runs efficiently.

Can a small power inverter be plugged into a 12 volt outlet?

Some small power inverters are equipped with DC power cords with plugs that can be plugged into a 12 volt vehicle outlet. Some have a cord set that have battery clips identified as Positive (Red color) and Negative (Black color). Some small inverters have two cords supplied; one with a plug and one with battery clips. 12 Volt Outlets

Can a 12v lithium battery be directly connected to an inverter



Everything to Consider When Switching an RV to ...

If you've ever considered switching your RV to lithium batteries, you may have thought (as many people do) that it's as simple as removing ...

[Get a quote](#)

How to Connect a Large or Small Inverter to a Battery

This blog answers questions about which inverters can be powered by 12V DC accessory outlets (cigarette lighter sockets) and which ...

[Get a quote](#)



Understanding the Basics of Connecting Lithium ...

Lithium batteries are widely used in energy storage systems due to their high efficiency, long life cycle, and light weight. Connecting a lithium ...

[Get a quote](#)



Can I Use a 24V Inverter with a 12V Battery? Compatibility and

This ensures optimal performance and longevity of your setup. To use a 24V inverter with a 12V battery, you can connect two 12V batteries in series. Connecting batteries ...

[Get a quote](#)



How to Connect a Solar Panel to a 12V Battery?

Here is a diagram connecting a single 100W solar panel to a 12V 100Ah lithium battery and a 500W inverter: Connecting a solar panel to a ...

[Get a quote](#)

Can Solar Panel Be Connected Directly to Battery: A ...

Discover the potential of connecting solar panels directly to batteries in this insightful article. Uncover the benefits of energy independence, backup power, and efficient ...

[Get a quote](#)



Understanding the Basics of Connecting Lithium Batteries to ...

Ensure that the battery's voltage is within the range that the inverter



supports. Most inverters are designed for 12V, 24V, or 48V systems, so the battery should match this ...

[Get a quote](#)

12 Volt Retrofit Lithium Battery Connection With Inverter , Best

Looking to upgrade your home power setup? ? In this video, we show you how to connect a 12 Volt Retrofit Lithium Battery with your inverter for optimal performance

[Get a quote](#)



Do I connect a load to charge controller or battery?

I am in the design phase of making a solar power station for camping with lifepo4 cells. The plan is to have a couple of 12v cigarette plugs and usb ports attached to a fuse box ...

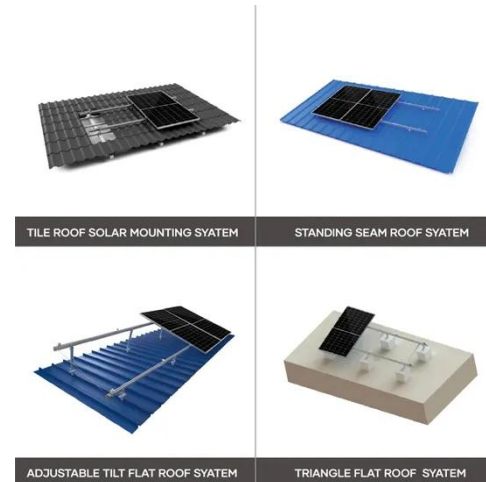
[Get a quote](#)

Can Lithium Batteries Work With Any Type of Inverter?

When setting up solar energy systems or

home energy storage, a common question arises: Are lithium batteries compatible with all inverters? ...

[Get a quote](#)



Can I Connect Inverter to Lithium Battery?

Yes, you can connect an inverter to a lithium battery. Lithium batteries, particularly Lithium Iron Phosphate (LiFePO4) batteries, are well-suited for use with inverters due to their ...

[Get a quote](#)

How to Connect a Large or Small Inverter to a Battery

This blog answers questions about which inverters can be powered by 12V DC accessory outlets (cigarette lighter sockets) and which require wiring directly to a battery.

[Get a quote](#)



Compatibility of Lithium-Ion Batteries with Existing ...

This blog post will walk you through the essentials of lithium-ion batteries, their benefits, and the steps to seamlessly



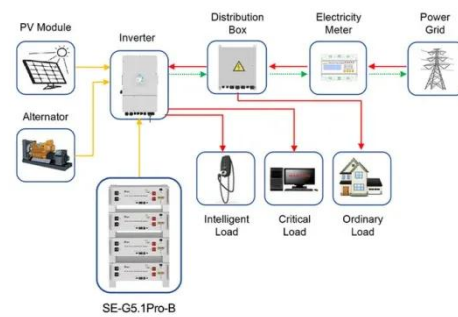
integrate them with your current inverter
...

[Get a quote](#)

Correct method for wiring a 12V Battery, Inverter, and Charger?

I purchased a LiTime 12V 230Ah Battery, 12V 2000W Inverter, and 12V 20A Lithium Battery Charger (14.6V). I'd like to install all three in a box and simply plug in the ...

[Get a quote](#)



Application scenarios of energy storage battery products



How to Connect Power Inverter to Car Battery

Connecting a power inverter to a car battery is a straightforward process that allows you to power devices while on the road. By using a power inverter, you can convert your car's ...

[Get a quote](#)

Compatibility of Lithium-Ion Batteries with Existing Inverters

This blog post will walk you through the essentials of lithium-ion batteries, their benefits, and the steps to seamlessly integrate them with your current inverter setup. From practical examples ...

[Get a quote](#)

Lithium battery parameters

Product capacity: 100Ah

Product size: 135*197*35mm

Product weight: 1.82kg

Product voltage: 3.2V

internal resistance: within 0.5



Can Lithium Batteries Work With Any Type of Inverter?

When setting up solar energy systems or home energy storage, a common question arises: Are lithium batteries compatible with all inverters? The short answer is no - proper ...

[Get a quote](#)

How to Safely Connect a Battery to an Inverter: A Step-by-Step ...

Learn how to safely connect your batteries to your inverter with our guide. Avoid common wiring mistakes to optimize performance and extend system life.

[Get a quote](#)



Can I Attach My Small Inverter Directly to the Battery?

Yes, you can attach a small inverter



directly to a battery, but doing it safely requires understanding voltage compatibility, wire sizing, and overload risks. Many DIYers assume it's ...

[Get a quote](#)

How to Connect 12-Volt Batteries for Various Power Needs

When it comes to harnessing the power of 12-volt batteries, understanding how to connect them correctly is essential for maximizing efficiency and performance. Whether you're ...

[Get a quote](#)



Can You Hook a Solar Panel Directly to a Battery?

Solar panels can produce electricity by converting UV light rays into energy, but is it possible to connect this system directly to a battery source? This article contains the answer.

[Get a quote](#)

Can Solar Panels Directly Charge A Battery? 2025 ...

How To Use Solar Panels Directly

Without Battery? While most solar panels are designed to work with a battery, it is possible to use them ...

[Get a quote](#)



Power Inverter: Can I Hook It Directly to the Battery for Safe

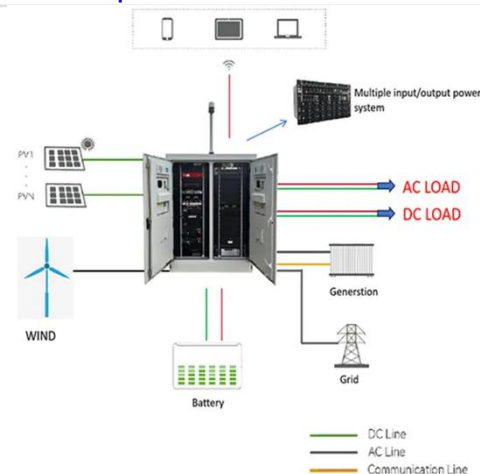
Yes, you can hook a power inverter directly to a battery. Ensure the inverter's power rating is compatible with the battery's capacity. This connection supplies reliable power to your ...

[Get a quote](#)

How to connect solar panels to battery bank, charge ...

How to connect solar panels to battery bank, charge controller, and inverter wiring diagrams: Setting up a solar power system requires proper ...

[Get a quote](#)



Can You Use a Solar Battery in a Normal Inverter?

Voltage and Capacity Considerations



Solar batteries and normal inverters must operate at compatible voltage levels. Most residential inverters ...

[Get a quote](#)

How to Safely Connect a Battery to an Inverter: A ...

Learn how to safely connect your batteries to your inverter with our guide. Avoid common wiring mistakes to optimize performance and extend ...

[Get a quote](#)



Understanding the Basics of Connecting Lithium ...

Ensure that the battery's voltage is within the range that the inverter supports. Most inverters are designed for 12V, 24V, or 48V systems, so the ...

[Get a quote](#)

Contact Us

For catalog requests, pricing, or partnerships, please visit:
<https://zenius.co.za>