

## SolarMax Energy Systems

# Can photovoltaic panels generate electricity by shading



## Overview

---

Yes, solar panels can still generate electricity when partially shaded, but with significantly reduced efficiency. Modern panels use bypass diodes to allow current to flow around shaded cells, preventing complete shutdown. Does shading a solar panel affect energy production?

This is not the case. Partial shading causes disproportional losses in energy production. In some cases, shading 10% of a solar panel can reduce its output power to 0 Watts. For example, shading the bottom 6 cells of a 60 cell solar panel can cause a 100% loss in power production.

What happens if a solar panel is partially shaded?

When a solar panel is partially shaded, it not only reduces the amount of sunlight that can be absorbed but also disrupts the flow of electricity through the panel. This can lead to the formation of hot spots, which can damage the solar cells and decrease the overall lifespan of the panel.

What technology can improve solar panels' performance in the shade?

Power optimizers are another technology that can help improve solar panels' performance in the shade. Like microinverters, power optimizers are attached to each solar panel in an array.

How can solar panel optimization reduce the impact of shading?

Solar panel optimization can help mitigate the impact of shading on energy production: Microinverters: Unlike traditional string inverters, microinverters are installed on each panel, allowing each one to operate independently. This reduces the impact of shading on the overall system.

## Can photovoltaic panels generate electricity by shading

---



### Can solar panels still generate electricity if they are partially

Yes, solar panels can still generate electricity when partially shaded, but with significantly reduced efficiency. Modern panels use bypass diodes to allow current to flow ...

[Get a quote](#)

---

## Different Techniques to Mitigate Partial Shading in Photovoltaic Panels

The effect of partial shading in photovoltaic (PV) panels is one of the biggest problems regarding power losses in PV systems. When the irradiance pattern throughout a PV ...



[Get a quote](#)

---



### CAN , English meaning

Can is usually used in standard spoken English when asking for permission. It is acceptable in most forms of written English, although in very formal writing, such as official instructions, may ...

[Get a quote](#)

---

## Game-Changer Solar Panels That Work in the Shade

When a solar panel is partially shaded, it not only reduces the amount of sunlight that can be absorbed but also disrupts the flow of electricity ...

[Get a quote](#)



## The Impact of Shading and Obstructions on Solar ...

In the world of solar energy, maximizing the efficiency of your solar panels is important for achieving prime energy production and return on ...

[Get a quote](#)

## Do Solar Panels Work in the Shade? Uncover the Truth

The truth is, solar panels can still produce electricity in the shade, but at a reduced rate. Shade affects their ability to absorb sunlight, which is ...

[Get a quote](#)



## What Is The Effect Of Shading On Solar Panels?

Even a small amount of shade on a solar panel can lead to a substantial reduction in energy production. This guide

explores the impact of shading on solar panel output, the ...

[Get a quote](#)



---

## Can solar panels still generate electricity if they are ...

Yes, solar panels can still generate electricity when partially shaded, but with significantly reduced efficiency. Modern panels use bypass diodes to ...

[Get a quote](#)



---

## Using solar panel shades for generating electricity - pros and cons

Solar panel shades integrate photovoltaic (PV) solar panels into the shading system, allowing them to generate electricity from sunlight. This dual functionality maximizes the use of ...

[Get a quote](#)

---

## CAN Definition & Meaning

The use of can to ask or grant permission has been common since the

19th century and is well established, although some commentators feel may is more appropriate in formal contexts.

...

[Get a quote](#)



✓ IP65/IP55 OUTDOOR CABINET

✓ WATERPROOF OUTDOOR CABINET

✓ 42U/27U

✓ OUTDOOR BATTERY CABINET

## Do solar panels work in the shade? A complete guide to solar panel

When a solar panel is only partially shaded, the amount of power it produces does not only depend on how much of the solar panel is shaded, but also on which cells are shaded ...

[Get a quote](#)

## Best Solar Panel for Partial Shade Conditions: A Guide

In recent years, solar energy has gained immense popularity as a sustainable and eco-friendly solution to meet our energy needs. Solar panels, ...

[Get a quote](#)

### FLEXIBLE SETTING OF MULTIPLE WORKING MODES



## 5 Effect of shading on solar panels + 10 ways to avoid

When a solar panel is shaded, even partially, it can reduce or completely



block the flow of sunlight to the panel, thereby reducing its ...

[Get a quote](#)

---

## Does a Solar Panel Need Direct Sunlight or Not?

Solar panels can generate power even in indirect sunlight, though their efficiency is higher in direct sunlight. Several factors, including the angle ...

[Get a quote](#)



---

## CAN definition in American English , Collins English Dictionary

You use can to indicate that someone has the ability or opportunity to do something. Don't worry yourself about me, I can take care of myself. I can't give you details because I don't actually ...

[Get a quote](#)

---

## Do solar panels work in the shade? A complete guide ...

When a solar panel is only partially shaded, the amount of power it produces

does not only depend on how much of the solar panel is shaded, but ...

[Get a quote](#)



## Game-Changer Solar Panels That Work in the Shade

When a solar panel is partially shaded, it not only reduces the amount of sunlight that can be absorbed but also disrupts the flow of electricity through the panel.

[Get a quote](#)

## How Does Shade and Bad Weather Impact Solar ...

Solar panels need constant and direct access to sunlight to maximize their electricity production. However, whether due to shading issues or cloudy days, ...

[Get a quote](#)



**can**

Despite the insistence by some, that can means only "to be able" and may means "to be permitted," both are regularly used in seeking or granting permission:



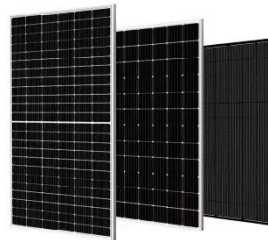
Deye inverters and Deye batteries are more compatible.

Can (or May) I borrow ...

[Get a quote](#)

## Solar Panel Shading Problems & Solutions

Shading on solar panels often results in a significant decline in performance. Bypass diodes are used to mitigate the effects of shading, but ...



[Get a quote](#)



## How do solar panels work? (Full guide)

Solar panels use silicon photovoltaic cells to transform sunlight into electrical power. The panels generate direct current which inverters convert to alternating current for ...

[Get a quote](#)

## Solar Panels Use Light, Not Heat - Here's Why

Solar panels use light to generate electricity, not heat. Learn how temperature, sunlight, and panel

efficiency impact solar performance and savings.

[Get a quote](#)



## Photovoltaic integrated shading devices (PVSDs): A review

If the PVSD is tilted towards the sun, more solar energy can be captured by the PV panels for maximum conversion into electricity (Boxwell, 2017), leading to the concept of the ...

[Get a quote](#)

## How does shading affect photovoltaic production? , ieco

Even small shadows that cover only a minimal portion of a panel can have a large impact on energy production. The reason lies in the internal structure of the modules and how ...

[Get a quote](#)



## Partial shading and solar panel arrays

Many modern panels, however, come



equipped with devices called bypass diodes which minimise the effects of partial shading by essentially enabling electricity to 'flow around' ...

[Get a quote](#)

---

## Solar Panel Shading Analysis: A Detailed Guide

If one solar panel is shaded, it can reduce the energy output of the entire series of panels, leading to significant overall power loss. Can solar panels charge in shade? Solar ...

[Get a quote](#)



---

## 5 Effect of shading on solar panels + 10 ways to avoid

When a solar panel is shaded, even partially, it can reduce or completely block the flow of sunlight to the panel, thereby reducing its efficiency in generating electricity. This is ...

[Get a quote](#)

---

## Can , ENGLISH PAGE

"Can" is one of the most commonly used modal verbs in English. It can be used to express ability or opportunity, to request or offer permission, and to show

possibility or impossibility.

[Get a quote](#)



---

## Contact Us

For catalog requests, pricing, or partnerships, please visit:  
<https://zenius.co.za>