

SolarMax Energy Systems

Front-end solar power supply system



Overview

Who is front end solar?

Front End Solar offers high level consultancy services for solar and storage systems integrated with other renewable technologies for on-grid and off-grid requirements. We also provide expertise for cutting edge innovations including microgrids and energy sharing options for communities that wish to explore their energy independence.

What is a front-end power supply?

Front-end power supplies are increasingly being used to meet the needs of distributed-power architectures in tele-communications networks. The front-end power supply converts ac power to 28 Vdc (for wireless cellular) or 48 Vdc.

Should a front-end power module be redundant?

Most front-end systems accommodate redundant operation, so that they continue to operate should a power module malfunction. The system should also allow hot pluggability so that a new power module can be inserted into the live voltage bus without taking down the system.

How does a front-end power system work?

Also, the front-end power system should have a low-voltage-disconnect (LVD) module to invoke the battery backup when an ac-fail condition exists (see Fig. 2). The LVD module, installed in series with the battery, functions as an intelligent switch that senses output voltages from the front-end bus. Fig. 2.

How much does a front-end power system cost?

The cost of front-end power is declining as versatile standard products become widely available. A competitive price point for adequately featured front-end power systems is now less than \$0.70 per watt for large quantities. Design considerations While front-end supplies have improved, the designer

should still keep several factors in mind.

How does a DSP power supply work?

The front-end power supply converts ac power to 28 Vdc (for wireless cellular) or 48 Vdc. This voltage is then converted at the card level by on-board dc/dc converters to whatever operating voltage is required—typically 5, 3.3, or 2.5 V for DSP chips.

Front-end solar power supply system



Who we are - Front End Solar

At Front End Solar, we take a holistic approach to our work, empowering local communities through training in the operation, maintenance and delivery of renewable and hybrid energy ...

[Get a quote](#)

Front-End Power Supplies for Custom Solutions

Read more about Bel's effective solution for increasing power density and improving efficiency by customizing standard front-end titanium ...

[Get a quote](#)



Front-End Power Supply , OmniOn Power

OmniOn Front-End Power Supply products can be found across the power spectrum, with the quality and reliability our customers have come to expect from us.

[Get a quote](#)



Active Front End (AFE)

This technical note introduces the working principle of an Active Front End (AFE) and presents an implementation example built with the TPI 8032 programmable inverter.

[Get a quote](#)



Find Authorized SES Solar Installers & Contractors Near You

SES Solar Installer - Contractor Locator
Need to find a solar installer for one of our systems? Choose from our Residential Roof or Ground Mount systems and use our Dealer Locator ...

[Get a quote](#)

AND90142

Three-phase Power Factor Correction (PFC) systems (or also call Active Rectification or Active Front-End systems) are becoming of great interest, experiencing a sharp increase in demand ...

[Get a quote](#)



Front-End Power Supplies for Custom Solutions & Applications



Front end power supplies from Bel Power Solutions provide industry-leading efficiencies and power density. Standard products are all designed to meet Titanium (TET) or ...

[Get a quote](#)

Front End PSUs AC-Input

Get best-in-class and scalable power conversion solutions with our highly reliable AC-DC front-end power supplies. Our market-leading PSUs in power and density include bulk front-end and ...

[Get a quote](#)



ESS



What a designer should know about front-end power ...

Most front-end systems accommodate redundant operation, so that they continue to operate should a power module malfunction. The system ...

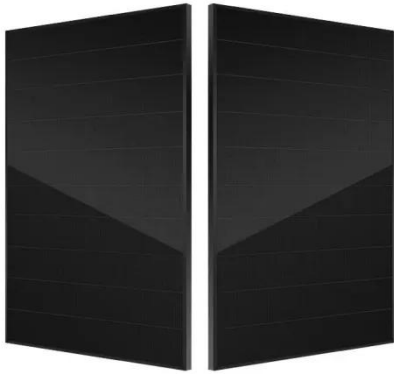
[Get a quote](#)

Part 5: Distributed Power Supply Systems and Power Modules

This system is called a distributed power supply. For example, the power supply

system for IT equipment, such as communication devices and PCs, consists of an AC-DC switching power ...

[Get a quote](#)



Installation Guide

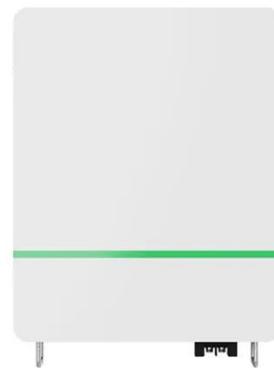
The TP-Link VIGI intelligent solar power supply system can provide stable and reliable voltage output for various electronic devices (such as security surveillance cameras, ...

[Get a quote](#)

Guide to FTM, BTM & Community Solar Options , US Light Energy

The push for renewable energy has introduced many options for harnessing solar power, each tailored to different needs and use cases. Among these, Front of the Meter ...

[Get a quote](#)



Front End PSUs DC-Input

Ensure that the form, fit, and function of your power supplies meet the needs of your distributed power systems with



Advanced Energy's DC-DC front-end power supplies.

[Get a quote](#)

Home Solar System Price List

Complete Residential Sloped & Flat Roof Solar Systems Transform your home's energy future with our comprehensive selection of premium solar solutions. ...

[Get a quote](#)



Part 5: Distributed Power Supply Systems and Power ...

This system is called a distributed power supply. For example, the power supply system for IT equipment, such as communication devices and PCs, consists ...

[Get a quote](#)

FAQs - Front End Solar

At Front End Solar we are experts in solar system design and we understand the importance of looking closely at your energy consumption profile in order to

design the best system that will ...

[Get a quote](#)



Spacecraft Electrical Power Systems

Typical EPS System Requirements
Supply continuous Electrical Power to subsystems as needed during entire mission life (including nighttime and eclipses). Safely distribute and control all of ...

[Get a quote](#)

Knowledge Hub - Front End Solar

"We'd like to thank Front End Solar for the way they implemented our new solar electricity system. They were one of two organisations we shortlisted, based on personal recommendations. "My ...

[Get a quote](#)



Front Terminal 12V-120ah Solar Power Supply System High-End ...



We focus on the research and development of lead-acid batteries, solar cells, deep cycle batteries and gel batteries. In addition, we also sell a full range of different capacities of 12 voltage, 6 ...

[Get a quote](#)

Front End Solar

We design solar PV and hybrid systems to meet residential, commercial and community needs. We deliver cutting edge innovative systems that drastically reduce our clients energy bills ...

[Get a quote](#)



Solar energy design resources , TI

Solar energy is at the forefront of designing a more sustainable world. With our industry-leading digital power conversion, current and voltage sensing products and connectivity and ...

[Get a quote](#)

Sophisticated Front-End Management for Efficient Solar-Energy ...

This technical note introduces the working principle of an Active Front End

(AFE) and presents an implementation example built with the TPI 8032 programmable inverter.

[Get a quote](#)



DPS Front-End Power Supplies

The CRPS AC-DC power supply provides a 2.9-inch wide rack mount enclosure, while the Slim Type power supply provides a 2.1-inch wide enclosure for space-saving ...

[Get a quote](#)

Sophisticated Front-End Management for Efficient Solar-Energy ...

To realize the potential of solar energy as a power source, the front-end interface between the cells and the energy-extraction circuitry must take into account the unique characteristics of ...

[Get a quote](#)



What a designer should know about front-end power systems

Most front-end systems accommodate



redundant operation, so that they continue to operate should a power module malfunction. The system should also allow hot pluggability so ...

[Get a quote](#)



Contact Us

For catalog requests, pricing, or partnerships, please visit:
<https://zenius.co.za>