

## SolarMax Energy Systems

# How big an inverter can I use for a 36kw photovoltaic panel



## Overview

---

The rule of thumb is to size your inverter 1.25 bigger than your solar array. In some cases, you may need to use multiple inverters to meet your power needs or increase your system's voltage. This practice, known as inverter stacking, involves connecting multiple inverters in parallel or series. How do I choose the right solar inverter size?

When it comes to solar inverter sizing, installers will consider three primary factors: the size of your solar array, geography, and site-specific conditions. The size of your solar array is the most important factor in determining the appropriate size for your solar inverter.

What is a solar inverter sizing calculator?

A solar inverter sizing calculator is a tool used to determine the appropriate size of a solar inverter for your solar power system based on the total power consumption of connected appliances and the size of your solar panel array. It ensures the inverter can handle the peak loads efficiently.

How many solar panels can a 5kw inverter handle?

The inverter's size must match the total wattage of your solar panels. Choosing the right inverter size is crucial for your system's best performance. When asking how many panels a 5kW inverter can handle, the answer is about 16-20 standard 300-watt panels. This is because a 5kW inverter can manage a total capacity of 6-7.5 kW.

How much power should a solar inverter have?

Match the inverter's power with your solar panels' total wattage. Usually, the inverter should be between 75-100% of the panel's power. Think about making the inverter 10-25% bigger to handle losses and efficiency drops over time. For homes, a 1:1 ratio between panel and inverter power is often best.

Can a solar inverter be bigger than the DC rating?

The size of your solar inverter can be larger or smaller than the DC rating of your solar array, to a certain extent. The array-to-inverter ratio of a solar panel system is the DC rating of your solar array divided by the maximum AC output of your inverter. For example, if your array is 6 kW with a 6000 W inverter, the array-to-inverter ratio is 1.

What is the best inverter to solar panel ratio?

The best inverter-to-solar panel ratio is between 0.8 and 1.0. This means the inverter should be slightly smaller than the total solar panel capacity. This ratio ensures the system works efficiently without being undersized or oversized. Is It Better to Oversize an Inverter?

## How big an inverter can I use for a 36kw photovoltaic panel

---



### Understanding Solar Inverter Sizes: What Size Do ...

Did you know solar inverters come in different sizes? Learn why size is important and which size inverter you need for your solar PV system here.

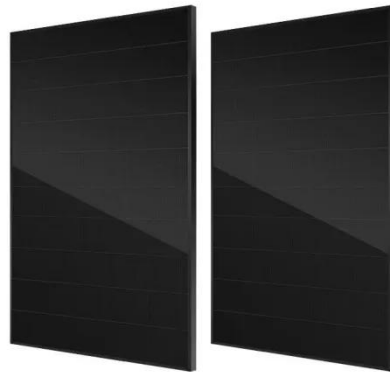
[Get a quote](#)

---

### Solar Inverter Sizing Calculator: Important Guide

This comprehensive guide will walk you through solar inverter sizing, explain its importance, and help you understand how to use a solar ...

[Get a quote](#)



### Solar inverter size: Calculate the right size for your inverter

For example, a 4 kWp solar panel system paired with a 3.6 kW inverter has a ratio of 1.1. Most solar systems are designed with a ratio between 1 and 1.25, to maximise efficiency without ...

[Get a quote](#)

---

## Solar System Sizing Tool &

## Calculator

Easy to use solar sizing calculator for entry level solar systems. Input monthly electricity cost, electricity consumption or input detailed electricity usage. The calculator can be used to ...

[Get a quote](#)



## How does sizing a solar inverter work?

As a general rule of thumb, the size of your inverter should be similar to the DC rating of your solar panel system; if you are installing a 6 ...

[Get a quote](#)

## What Size Solar Inverter Do I Need? Experts Break It Down

Picking the right solar inverter isn't rocket science, but it's not a wild guess either. Match your inverter size to your solar panel output, leave a little headroom, and don't cheap ...

[Get a quote](#)



## Solar Inverter Size Calculator , Inverter Sizing Tool

Calculate the optimal inverter size for your solar system. Determine the right inverter capacity based on panel array

size, system configuration, and power requirements.

[Get a quote](#)



## Solar Panel Inverter Size Calculator

Safety and Code Compliance for Inverter Installation When figuring out how do i know what size solar inverter i need? or can you run an inverter directly off a solar panel?, ...

[Get a quote](#)



## Solar inverter size: Calculate the right size for your ...

For example, a 4 kWp solar panel system paired with a 3.6 kW inverter has a ratio of 1.1. Most solar systems are designed with a ratio between 1 and 1.25, ...

[Get a quote](#)

## Solar Inverter Sizing Calculator: Important Guide

This comprehensive guide will walk you through solar inverter sizing, explain its importance, and help you understand

how to use a solar inverter sizing calculator effectively.

[Get a quote](#)



## calculate inverter size for solar + Sizing Formula

Common sizes range between 1kW and upwards over 10kW. In order to accurately size your inverter, here is a very simple formula:  $\text{Inverter Size} = \text{Total Solar Panel ...}$

[Get a quote](#)

## Solar Panel Inverter Size Calculator

To find the right inverter size for your solar panel system, you need to know your energy needs and the solar panel specs. Make sure the inverter can handle the solar energy ...

[Get a quote](#)



## What Size Solar Inverter Do I Need? Experts Break It ...

Picking the right solar inverter isn't rocket science, but it's not a wild guess either. Match your inverter size to your

solar panel output, leave a little ...

[Get a quote](#)

12V 10AH



## 16 panel system with 3.6kw inverter : r/SolarUK

I just had a solar system installed. 7kw panel setup with a hot water diverter. It's Northern Ireland and I am told NI Electric have a hard limit on residential systems of 3.6kw max export. My ...

[Get a quote](#)



## Solar System Size Calculator: How Much Solar Do I ...

Use our free solar system size calculator to estimate how much solar you need for your house. Quickly calculate how many solar panels you ...

[Get a quote](#)



## How does sizing a solar inverter work?

As a general rule of thumb, the size of your inverter should be similar to the DC rating of your solar panel system; if you



are installing a 6 kilowatt (kW) system, you can expect ...

[Get a quote](#)



## How to Choose the Right Size Solar Inverter: Step-by-Step with ...

This guide walks you through calculating inverter size based on panel capacity, power usage, and safety margins. We use real examples from installations in Texas and ...

[Get a quote](#)

## Size your solar system

Talk to your solar retailer or installer about the inverter specifications for inverter to panel size requirements. If the system size (total rated solar panel output) is more than the inverter ...

[Get a quote](#)



## How to Estimate Solar System Size - Complete ...

Learn how to estimate solar system size with this expert guide. Get accurate

solar panel sizing, inverter matching,  
and battery capacity calculation ...

[Get a quote](#)



---

## Solar Panel Inverter Size Calculator: Know What You Need , Angi

Solar inverters come in different sizes, and you'll need to check the output of your solar energy system to find the perfect match. This guide can serve as a solar panel inverter ...

[Get a quote](#)



## Inverter Size Calculator [Power Inverter, AC, DC, ...

Calculate the ideal inverter size with the Inverter Size Calculator. Perfect for selecting inverters for homes, solar panels, or vehicles based on ...

[Get a quote](#)

---

## Solar Inverter Sizing to Improve Solar Panel Efficiency

The system efficiency of your solar power system can be impacted by under-

sizing or over-sizing your inverter. What are the implications of ...

[Get a quote](#)



## What Size Inverter To Charge E-Bike Battery? [With Size Chart]

To use solar power, you will have to connect the solar panel to an inverter and connect the inverter to the e-bike battery. The reason behind this is to adjust the voltage and transform DC ...

[Get a quote](#)

## A Guide To Solar Inverter Sizing

? Solar Inverter Sizing (Home, RV, Portable) An inverter's primary task is to convert the direct current (DC) generated by solar panels to alternating current ...

[Get a quote](#)



## Contact Us

For catalog requests, pricing, or partnerships, please visit:  
<https://zenius.co.za>