

SolarMax Energy Systems

How big an inverter can a 42w solar panel support



Overview

How to size a solar inverter?

The right way to size an inverter is to check the wattage. The inverter wattage must be the same or greater than your solar panel's watts. Here is a chart that shows the watts consumption of various appliances and what inverter size you will need. Note that this guide includes a 20% safety margin for the inverter watts.

How much power should a solar inverter have?

Match the inverter's power with your solar panels' total wattage. Usually, the inverter should be between 75-100% of the panel's power. Think about making the inverter 10-25% bigger to handle losses and efficiency drops over time. For homes, a 1:1 ratio between panel and inverter power is often best.

How many solar panels can a 5kw inverter handle?

The inverter's size must match the total wattage of your solar panels. Choosing the right inverter size is crucial for your system's best performance. When asking how many panels a 5kW inverter can handle, the answer is about 16-20 standard 300-watt panels. This is because a 5kW inverter can manage a total capacity of 6-7.5 kW.

How do I choose the right inverter size?

Knowing them helps you calculate the total kilowatts (kW) your system will produce. This is key to picking the right inverter size. If you need a 5kW system and each panel is 300 watts, you'll need about 17 panels. Knowing how to figure out the inverter size is important for efficient energy generation.

How does the inverter size calculator work?

Our Inverter Size Calculator simplifies this task by accurately estimating the recommended inverter capacity based on your solar panel power and

quantity. By inputting your panel's rated power and number of panels, the calculator produces a recommended inverter power range that aligns with 80-100% of your system's total DC capacity.

What voltage do I need for a portable solar panel?

For portable solar panels in the 100 watt range, 12V, 24V or 48V will be fine. If you have a more powerful inverter, higher voltage is required. This information will be provided in the inverter, and this will prove useful if you want to connect it direct to a solar panel.

How big an inverter can a 42w solar panel support



What Size Inverter You Need (Calculations + Battery)

The size of the inverter required will be determined by the total wattage of the appliances you need to operate and the time they need to run. ...

[Get a quote](#)

PVWatts Calculator

NREL's PVWatts ® Calculator Estimates the energy production of grid-connected photovoltaic (PV) energy systems throughout the world. It allows homeowners, small building owners, ...

[Get a quote](#)



How Big of an Inverter Can My Car Battery Handle?

Typically, a 12-volt car battery can support an inverter with a power range of about 150 watts to 1500 watts. Please note, however, that car ...

[Get a quote](#)

How to Choose the Right Size Solar Inverter: Step-by-Step

with ...

This guide walks you through calculating inverter size based on panel capacity, power usage, and safety margins. We use real examples from installations in Texas and ...

[Get a quote](#)



How to Calculate Solar Panel, Battery, and Inverter Size

In general, your inverter capacity should be approximately the same size as the total wattage of your solar panels. This ensures that the inverter operates at its most efficient point, which is ...

[Get a quote](#)

How To Size A Solar Inverter in 3 Easy Steps

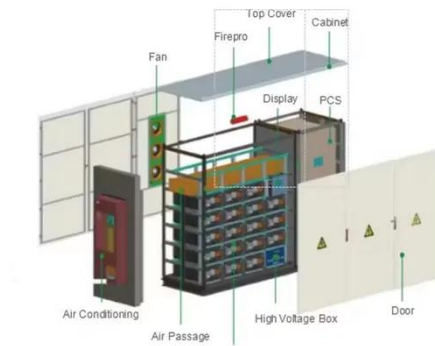
Choose an inverter that has a surge watt rating equal to or greater than this value. As for voltage drop, check the wire length between your solar panels and the batteries. If the wire length is ...

[Get a quote](#)



Solar Panel Inverter Size Calculator: Know What You Need , Angi

Planning to install solar panels? You'll



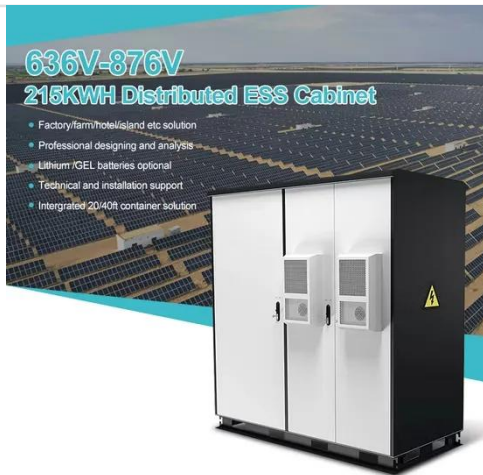
need a solar inverter. Follow this guide to calculate the best solar panel inverter size for your system.

[Get a quote](#)

What Size Inverter Do I Need for a 100 Watt Solar ...

Installing 100W solar panels will allow you to experience the convenience of solar energy in use so that you can see why solar energy ...

[Get a quote](#)



Solar Inverter Size Chart

The inverter wattage must be the same or greater than your solar panel's watts. Here is a chart that shows the watts consumption of various appliances and what inverter size you will need.

[Get a quote](#)

Solar Inverter Size Chart

In general, your inverter capacity should be approximately the same size as the total wattage of your solar panels. This ensures that the inverter operates at ...

[Get a quote](#)

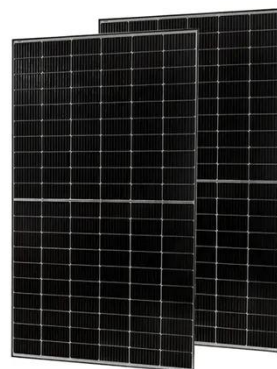
40 Watt Solar Panel: Everything You Need To Know

After this guide, you'll never need to read any other article about a 40-watt solar panel. you'll learn, how much power you can expect from a 40 ...

[Get a quote](#)

Solar inverter size: Calculate the right size for your ...

Inverters are usually sized lower than the kilowatt peak (kWp) of the solar array because solar panels rarely achieve peak power. The solar array-to-inverter ...

[Get a quote](#)

What Size Solar Inverter Do I Need? Experts Break It ...

Picking the right solar inverter isn't rocket science, but it's not a wild guess either. Match your inverter size to your

solar panel output, leave a little ...

[Get a quote](#)



MPPT charge controller calculator: Find the right solar ...

...

MPPT Size Calculator The MPPT calculator has 6 input fields that will describe your solar energy system: 1- Solar panel wattage: This is the ...

[Get a quote](#)



How many solar panels can an inverter handle

Solar panels are a crucial component of your solar energy system, but understanding how many can be connected to your inverter is crucial for optimal performance. ...

[Get a quote](#)

Solar inverter size: Calculate the right size for your inverter

Inverters are usually sized lower than the kilowatt peak (kWp) of the solar

array because solar panels rarely achieve peak power. The solar array-to-inverter ratio is calculated by dividing the ...

[Get a quote](#)



Ultimate Guide to Choosing Inverter for 300 Watt ...

What size inverter for 300 watt solar panel system? For a 300 watt solar panel, you need anywhere between 500-1500 watt capacity inverter. ...

[Get a quote](#)

What Size Solar Inverter Do I Need? Experts Break It Down

Picking the right solar inverter isn't rocket science, but it's not a wild guess either. Match your inverter size to your solar panel output, leave a little headroom, and don't cheap ...

[Get a quote](#)



Understanding Solar Inverter Sizes: What Size Do ...

Did you know solar inverters come in different sizes? Learn why size is important and which size inverter you

need for your solar PV system here.

[Get a quote](#)



Solar Panel Inverter Size Calculator

For a 7kW solar system, you'll need an inverter of at least 7.5-8 kW. This size ensures it can handle your solar array's full output. It prevents power clipping and keeps ...

[Get a quote](#)



How Many Solar Panels Can I Connect to an Inverter?

Connecting the right number of solar panels to your inverter is about more than just filling space on your roof--it's essential for making your system work efficiently, safely, and ...

[Get a quote](#)

Solar Inverter Size Calculator , Inverter Sizing Tool

Calculate the optimal inverter size for your solar system. Determine the right inverter capacity based on panel array

size, system configuration, and power requirements.

[Get a quote](#)



Beginner's Guide: Sizing Your Solar System , Renogy US

Learn how to accurately size your solar system with this comprehensive guide. Determine the panels, batteries, controller, and inverter required for your setup. Calculate load sizing, solar ...

[Get a quote](#)

Understanding Battery Capacity and Inverter Compatibility

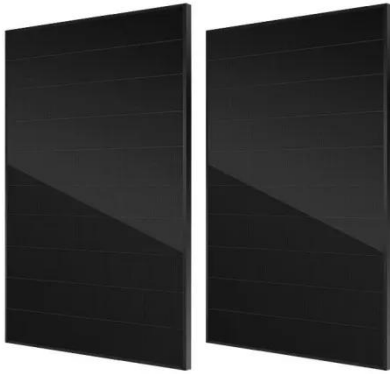
How Long Can a 100 Ah Battery Run a 1000W Inverter? To estimate how long a battery can run an inverter, we need to consider the power draw and the battery's capacity. ...

[Get a quote](#)



Inverter Size Calculator - self2solar

Optimize your solar system by



calculating the ideal inverter size. Simply input panel specs for a recommended inverter power range that ensures efficiency and safety today!

[Get a quote](#)

Contact Us

For catalog requests, pricing, or partnerships, please visit:
<https://zenius.co.za>