

SolarMax Energy Systems

How big of an inverter should I use for a 12 volt system



Overview

Do I need an inverter size chart?

The need for an inverter size chart first became apparent when researching our DIY solar generator build. Solar generators range in size from small generators for short camping trips to large off-grid power systems for a boat or house. Consequently, inverter sizes vary greatly.

What are the different solar inverter sizes?

Solar generators range in size from small generators for short camping trips to large off-grid power systems for a boat or house. Consequently, inverter sizes vary greatly. During our research, we discovered that most inverters range in size from 300 watts up to over 3000 watts. In this article, we guide you through the different inverter sizes.

What is a 12 volt inverter?

An inverter is a device that turns the power from a 12 volt DC battery, like the one in your car or truck, into the 120 volt AC power that runs all of the electronics in your house. You can use one of these devices to power all sorts of devices in your car, but it's important to figure out how big of an inverter you need first.

How to calculate inverter size?

Using the Inverter Size Calculator is quick and easy. You'll need three inputs: Total Wattage (W): This is the total power consumption of all the appliances or devices you plan to run through the inverter. Safety Factor: A multiplier to ensure some buffer above your actual power requirement. Typically ranges from 1.1 to 1.5.

How much power does an inverter need?

The continuous power requirement is actually 2250 but when sizing an inverter, you have to plan for the start up so the inverter can handle it. Third,

you need to decide how long you want to run 2250 watts. Let's say you would like to power these items for an eight-hour period.

What voltage should a 12V inverter run on?

The input voltage of the inverter should match the battery voltage. (For example 12v battery for 12v inverter, 24v battery for 24v inverter and 48v battery for 48v inverter)

Summary What Will An Inverter Run & For How Long?

How big of an inverter should I use for a 12 volt system



What Size Inverter do I Need? [with Examples]

A power inverter is a very handy device that will turn your 12-volt DC current (that is coming from your battery or solar) into 110/120-volt AC (what most ...

[Get a quote](#)

How To Size A Solar Inverter in 3 Easy Steps

If it fits your inverter, then, size of 400-watts is right for you, if not, get a bigger inverter or step down on your load. You can run either one large device or ...



[Get a quote](#)



Find the Right Inverter Size: How Big An Inverter Do You need?

Before you buy a power inverter for your car, you need to know what size to purchase. Here's how to estimate your power needs.

[Get a quote](#)

Calculate Battery Size For Any

Size Inverter (Using Our Calculator)

Inverter capacity (W)*Runtime (hrs)/solar system voltage = Battery Size*1.15.
Multiply the result by 2 for lead-acid type battery, for lithium battery type it would stay the ...

[Get a quote](#)



How to Determine the Correct Fuse for Your Inverter

Discover how to choose the correct fuse size and type for your inverter with our guide. Power ratings, system voltage, current calculation, and fuse selection made simple with examples to ...

[Get a quote](#)

What Size Inverter You Need (Calculations + Battery)

Inverters are made with different power capacities, depending on the size of the system you want to run. For this discussion, we are looking at a domestic inverter that you can ...

[Get a quote](#)



Can One 12 Volt Battery Run a 1000 Watt Inverter?

Yes, a single 12-volt battery can run a 1000-watt inverter, but the runtime depends on several factors such as the

battery's capacity, the inverter's efficiency, and the load ...

[Get a quote](#)

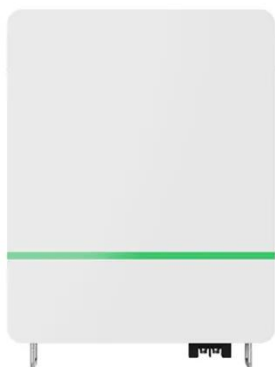


Advice on selecting an inverter - Sinetech

It is definitely advantageous to use a pure sinewave inverter as a pure sinewave inverter can basically run any type of equipment in contrast to a modified sinewave / step square wave ...



[Get a quote](#)



calculate inverter size for solar + Sizing Formula

How do I determine the right size of inverter for my solar installation? To calculate the right inverter size, assess your daily energy ...

[Get a quote](#)

Inverter Size Calculator

When building a solar system, designing an off-grid power setup, or running appliances on backup power, one of the most essential steps is determining the

correct inverter size. Choosing the ...

[Get a quote](#)



What Size Inverter You Need (Calculations + Battery)

Inverters are made with different power capacities, depending on the size of the system you want to run. For this discussion, we are looking at a ...

[Get a quote](#)

What Size Inverter Do I Need for My RV or Camper?

The RV's inverter converts 12 VDC from your battery into 120 VAC, standard house electricity, allowing you to use it for equipment or appliances. A ...

[Get a quote](#)



How To Size an Inverter: Solar Inverter Sizing Explained

When sizing an inverter, calculate the total wattage needed and understand surge vs. continuous power. Choose the

right size with a 20% ...

[Get a quote](#)



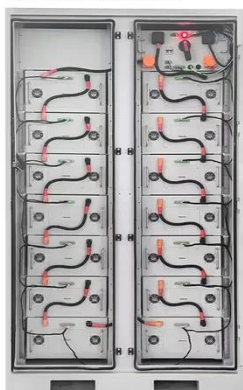
How To Size A Solar Inverter in 3 Easy Steps

In this guide, we share 3 easy steps on how to size a solar inverter correctly. We explain the key concepts that determine solar inverter sizing including your power needs, the type and number ...



[Get a quote](#)

To Strive forward No Energy Waste



- ✓ All in one
- ✓ 100~215kWh High-capacity
- ✓ Intelligent Integration

Battery To Inverter Wire Size Calculator: What Size

The Continuous Power rating of the inverter (in Watts). The voltage of the battery bank (in Volts). The distance between the battery bank ...

[Get a quote](#)

12 Volt Battery Run Time Calculator

Do you have a 12v device you need to power but don't know what 12-volt battery you need? For those running a

continuous 12-volt load, an adequately sized deep-cycle ...

[Get a quote](#)



MPPT charge controller calculator: Find the right solar ...

MPPT Size Calculator The MPPT calculator has 6 input fields that will describe your solar energy system: 1- Solar panel wattage: This is the ...

[Get a quote](#)

12V vs 24V Inverter: What's The Difference & Which is Better

Inverters play a crucial role in modern power systems, converting DC (direct current) to AC (alternating current) for use in everyday devices. When choosing between a 12 voltage ...

[Get a quote](#)



How To Size an Inverter: Solar Inverter Sizing Explained

When sizing an inverter, calculate the



total wattage needed and understand surge vs. continuous power. Choose the right size with a 20% safety margin. Factor in simultaneous ...

[Get a quote](#)

Selecting The Right Cable Size For Your Battery Bank

Are you putting together a battery bank for an alternative energy system? Or just wondering what gauge wire to connect 12 volt batteries? Maybe you're trying to determine the ...



[Get a quote](#)



How to Determine the Right Inverter Sizes for Your ...

Choosing the right inverter size ensures your electrical needs are met efficiently and safely. An inverter converts direct current (DC) electricity ...

[Get a quote](#)

What Size Inverter do I Need? [with Examples]

If it fits your inverter, then, size of 400-watts is right for you, if not, get a bigger inverter or step down on your

load. You can run either one large device or several smaller devices at the same ...

[Get a quote](#)



Contact Us

For catalog requests, pricing, or partnerships, please visit:
<https://zenius.co.za>