

## SolarMax Energy Systems

# How big of an inverter should I use for a 12v

**1mwh** (500kw/1mw)

AIR COOLING  
ENERGY STORAGE CONTAINER



## Overview

---

Once you've figured out what devices you want to plug into your inverter, you can dig right in and figure out the right size inverter to buy. As an example, let's say that you want to plug in your laptop, a light bulb, a television, and still be able to run your printer. The first thing you need to do is figure out how much.

Before you buy and install a power inverter, it's essential to determine what your power needs are going to be. It's also important to avoid.

The right size inverter for your specific application depends on how much wattage your devices require. This information is usually printed somewhere on electronic devices, although it may show voltage and amperage ratings instead. If you are able to find the specific.

If you aren't sure of the exact power requirements of your devices, you can actually figure that out by looking at the device or doing some.

In the previous example, we found out that my old Xbox 360 power supply can draw up to 600 watts during heavy usage. That means you'd need at least a 600 watt inverter to use an Xbox 360 in your car. In practice, you might get away with a smaller inverter.

What voltage should a 12V inverter run on?

The input voltage of the inverter should match the battery voltage. (For example 12v battery for 12v inverter, 24v battery for 24v inverter and 48v battery for 48v inverter Summary What Will An Inverter Run & For How Long?

.

What size inverter do I Need?

The right size inverter for your specific application depends on how much wattage your devices require. This information is usually printed somewhere on electronic devices, although it may show voltage and amperage ratings instead.

What are the different solar inverter sizes?

Solar generators range in size from small generators for short camping trips to large off-grid power systems for a boat or house. Consequently, inverter sizes vary greatly. During our research, we discovered that most inverters range in size from 300 watts up to over 3000 watts. In this article, we guide you through the different inverter sizes.

How to calculate inverter size?

Using the Inverter Size Calculator is quick and easy. You'll need three inputs: Total Wattage (W): This is the total power consumption of all the appliances or devices you plan to run through the inverter. Safety Factor: A multiplier to ensure some buffer above your actual power requirement. Typically ranges from 1.1 to 1.5.

How much battery do I need to run a 3000-watt inverter?

You would need around 24v 150Ah Lithium or 24v 300Ah Lead-acid Battery to run a 3000-watt inverter for 1 hour at its full capacity Here's a battery size chart for any size inverter with 1 hour of load runtime Note! The input voltage of the inverter should match the battery voltage.

How much power does an inverter need?

The continuous power requirement is actually 2250 but when sizing an inverter, you have to plan for the start up so the inverter can handle it. Third, you need to decide how long you want to run 2250 watts. Let's say you would like to power these items for an eight-hour period.

## How big of an inverter should I use for a 12v

---

Our Lifepo4 batteries can be connected in parallels and in series for larger capacity and voltage.



### What Size Inverter Do I Need for a 12V 100Ah Battery?

For a 12V 100Ah battery, an inverter size of approximately 1000W is recommended for most applications. This allows you to utilize about 80% of your battery ...

[Get a quote](#)

---

### What Size Inverter You Need (Calculations + Battery)

Inverters are made with different power capacities, depending on the size of the system you want to run. For this discussion, we are looking at a ...



[Get a quote](#)

---



### Battery To Inverter Wire Size Calculator: What Size

If you're interested in how the tool works or would like to do your calculations manually, I'll also explain how this works. Battery to inverter wire ...

[Get a quote](#)

---

## What size inverter should I buy

## for my camper? : ...

Be aware of the size wires, fuses and delivery capacity your battery needs to run bigger inverters. Personally I have 350watt in Ute, and inherited a 2000w mod ...

[Get a quote](#)



## Can an Inverter Be Too Big for Your Battery System?

Match the inverter's continuous wattage rating to the battery's discharge capacity. For a 12V 200Ah battery (2.4kWh), a 2000W inverter is ideal.

Formula: Inverter Wattage [Get a quote](#)

## Calculate Battery Size For Any Size Inverter (Using Our Calculator)

Pairing a right size capacity battery for an inverter can be a bit confusing for most the beginners So I have made it easy for you, use the calculator below to calculate the battery ...

[Get a quote](#)



## What size inverter do you need for a 100ah battery?

Input Voltage in Volts (V): This rating



relates to the voltage of your battery. A 12V battery will require a 12V inverter, and a 24V battery will require a 24V inverter. Output ...

[Get a quote](#)

---

## What Size Inverter You Need (Calculations + Battery)

Inverters are made with different power capacities, depending on the size of the system you want to run. For this discussion, we are looking at a domestic inverter that you can ...



[Get a quote](#)



---

## How to Determine the Correct Fuse for Your Inverter

Discover how to choose the correct fuse size and type for your inverter with our guide. Power ratings, system voltage, current calculation, and fuse selection made simple with examples to ...

[Get a quote](#)

---

## How big an inverter should I use for a 120kw photovoltaic panel

To calculate the ideal inverter size for

your solar PV system, you should consider the total wattage of your solar panels and the specific conditions of your installation site. The ...

[Get a quote](#)



## What Inverter Works With My Car Cigarette Lighter/12V Outlet

It's not always clear what size of inverter will work in a car cigarette lighter. In this post I explain 12V outlet power ratings to help you get the right one.

[Get a quote](#)

## 12V Wire Size Calculator + Chart: What Size Wire ...

To not get the size of the 12V cable wrong, you can use two key resources further on: 12V Cable Size Calculator. This calculator estimates the minimum ...

[Get a quote](#)



## What Size Inverter do I Need? [with Examples]

The size of the inverter that you need greatly depends on the anticipated



usage. All the devices that you plan to run at the same time have to be added and then pick the inverter closest for ...

[Get a quote](#)



51.2V 150AH, 7.68KWH

## What Size Inverter do I Need? [with Examples]

The size of the inverter that you need greatly depends on the anticipated usage. All the devices that you plan to run at the same time have to be added and ...

[Get a quote](#)



## What size inverter do you need for a 100ah battery?

Input Voltage in Volts (V): This rating relates to the voltage of your battery. A 12V battery will require a 12V inverter, and a 24V battery will require ...

[Get a quote](#)



## Find the Right Inverter Size: How Big An Inverter Do You need?

Before you buy a power inverter for your car, you need to know what size to



purchase. Here's how to estimate your power needs.

[Get a quote](#)



## What Size Inverter Do I Need for a 12V 100Ah Battery?

When determining what size inverter you need for a 12V 100Ah battery, it's essential to consider both your power requirements and the efficiency of your inverter system. ...

[Get a quote](#)

## What is the max size inverter (wattage) I could get for my 12v ...

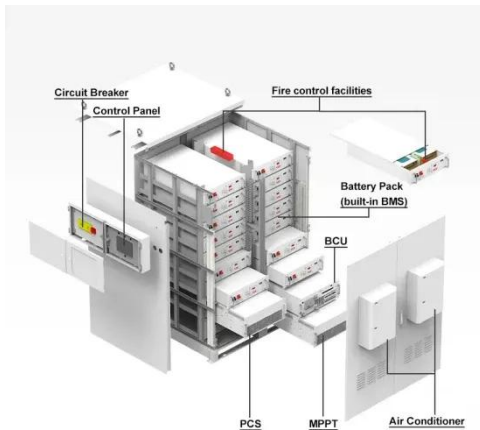
Additionally, the lower your use:capacity ratio is the less efficient your inverter is. In other words, if you get a 93% efficient 3000W inverter, but only use 1700W, your run-times will suffer ...

[Get a quote](#)



## Do I Need A Fuse Between Battery And Inverter

If there is a 500-watt power inverter,



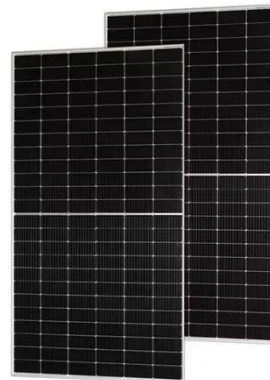
you'll need to use a 50-amp fuse between the battery and the inverter. There are 3 different locations where you need to place the fuse.

[Get a quote](#)

## Inverter Size Calculator

When building a solar system, designing an off-grid power setup, or running appliances on backup power, one of the most essential steps is determining the correct inverter size. Choosing the ...

[Get a quote](#)



## Installing 3000 W inverter - fuse size - wire size

The Inverter manufacturer will likely/should have a recommended minimum wire size for the Inverter. That would be a good source of info for you.

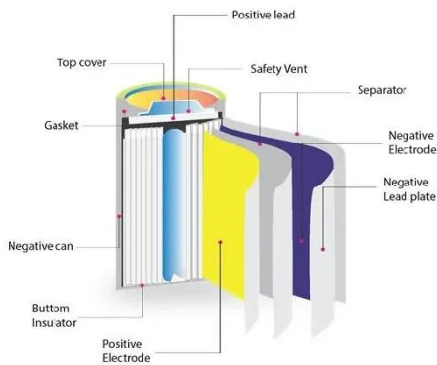
[Get a quote](#)

## What Size Inverter Do I Need for a 200Ah Lithium Battery

How do you determine the right size inverter for a 200Ah lithium battery? The ideal inverter size depends on your

power needs and the ...

[Get a quote](#)



## 12V vs 24V vs 48V Inverter: How to Choose the Right System for ...

Confused about choosing between 12V, 24V, or 48V inverter systems? Discover which voltage is best for RV, solar, and off-grid setups. Learn the pros, cons, efficiency, cable ...

[Get a quote](#)

## Can One 12 Volt Battery Run a 1000 Watt Inverter?

A 12V battery provides a practical and widely available power source, but whether it can run the inverter for long periods depends on how much energy the inverter is pulling ...



[Get a quote](#)

## Contact Us

For catalog requests, pricing, or partnerships, please visit:

<https://zenius.co.za>