

SolarMax Energy Systems

How many inverters are needed for a 200kw industrial and commercial power station



Overview

The 200kw on grid solar power system is composed of 200kw PV modules, two 100kw solar inverters connected in parallel, and customized PV mounts. It can generate 800kWh to 1100kWh of electricity per day, so it is widely used in industrial and commercial sectors, hotels, factories, farms and so on. What is a 200kw/200kva inverter?

200kW/200kVA, 1500Vdc PCS String Inverters for North America The 200kW/200kVA high power CPS three phase energy storage inverter is designed for use in commercial and utility-scale grid-tied energy storage systems.

Which solar inverters are suitable for multi-megawatt power plants?

The inverters are available from 100 kW up to 500 kW, and are optimized for cost-efficient multi-megawatt power plants. The ABB solar inverters have been developed on the basis of decades of experience in the industry and proven technology platform.

How many kW can a solar inverter generate?

Total capacity = $20 \times 500 = 10,000$ watts or 10 kW The industry standard suggests that the inverter's capacity should be between 80% to 125% of the solar panels' capacity. For example, if your panels generate 10 kW: Minimum inverter size = $10,000 \times 0.8 = 8$ kW Maximum inverter size = $10,000 \times 1.25 = 12.5$ kW.

Do I need an inverter size chart?

The need for an inverter size chart first became apparent when researching our DIY solar generator build. Solar generators range in size from small generators for short camping trips to large off-grid power systems for a boat or house. Consequently, inverter sizes vary greatly.

What size solar inverter do I Need?

System Size: A 10 kW solar system typically needs an inverter between 8 kW and 12.5 kW. **Inverter Efficiency:** Choose an inverter with a high efficiency rating (typically 95% or higher) for maximum energy conversion. **Power Usage:** Analyze your daily energy consumption to ensure the inverter matches your household or business needs.

How many inverters do I Need?

The number of inverters you need depends on the system design: For small systems (less than 5 kW), a single inverter is usually sufficient. For larger systems, multiple inverters or a string inverter with optimizers may be required.

How many inverters are needed for a 200kw industrial and commercial



200KW~235KW Three Phase High Voltage Hybrid Inverter , SOSEN

Our quality 200KW~235KW Three Phase High Voltage Hybrid Inverter can be used in various situations. It can be customized to fit your specific needs. Get quote!

[Get a quote](#)

The Only Inverter Size Chart You'll Ever Need

This comprehensive guide will walk you through solar inverter sizing, explain its importance, and help you understand how to use a solar ...



[Get a quote](#)



200KVA 200KW Off Grid Solar Power System With ...

What's the difference between off grid and on grid solar power system? Off Grid Solar Power System On Grid Solar Power System Off grid solar power system ...

[Get a quote](#)

200kw On Grid Solar Power System

The 200kw on grid solar power system is composed of 200kw PV modules, two 100kw solar inverters connected in parallel, and customized PV mounts. It can generate 800kWh to ...

[Get a quote](#)



200 kW Solar Kits

SunWatts has a big selection of affordable 200 kW PV systems for sale. These 200kW grid-connected solar kits include solar panels, DC-to-AC inverter, rack mounting system, hardware, ...

[Get a quote](#)

Inverter Size Calculator [Power Inverter, AC, DC, Solar Inverter]

Calculate the ideal inverter size with the Inverter Size Calculator. Perfect for selecting inverters for homes, solar panels, or vehicles based on power requirements.

[Get a quote](#)



calculate inverter size for solar + Sizing Formula

One of the prime things to take into consideration when delving deep into



solar energy regard involves the inverter. The inverter changes direct current from the solar panels ...

[Get a quote](#)

ABB central inverters

The inverters are available from 100 kW up to 500 kW, and are optimized for cost-efficient multi-megawatt power plants. The ABB solar inverters have been developed on the basis of ...

[Get a quote](#)



Sizing Generators for Motor Starting: A Practical Guide to

The first characteristic is power factor. Three-phase generator sets are usually rated in kVA at 0.8 power factor. Starting power factors of motors vary from 0.3 to 0.5 and increase towards unity ...

[Get a quote](#)

Everything You Need to Know About Solar Inverter Sizing

The string inverter needs to accommodate these inputs at predefined voltage and power levels, which means

proper solar inverter sizing is crucial. For example, given a rooftop PV system ...

[Get a quote](#)



200KW~235KW Three Phase High Voltage Hybrid ...

Our quality 200KW~235KW Three Phase High Voltage Hybrid Inverter can be used in various situations. It can be customized to fit your specific needs. Get ...

[Get a quote](#)

How Many Inverters Do I Need? (What You Need)

There are three types of inverters available: the string inverter, the power optimizer, and the micro-inverter. You would only need one inverter ...

[Get a quote](#)



Commercial 200kW Solar System, Installation & Price ...

Then you will need to figure out how many panels you'll need to power your 200kW system. Most solar panels are

between 275 watts and 350 watts in ...

[Get a quote](#)



200kW/200kVA, 1500Vdc PCS String Inverters for North ...

200kW/200kVA, 1500Vdc PCS String Inverters for North America CPS ECB200KTL/US-800 use in commercial and utility-scale grid-tied energy storage systems. The inverter is optimized to ...

[Get a quote](#)



Solar Inverter Sizing Calculator: Important Guide

This comprehensive guide will walk you through solar inverter sizing, explain its importance, and help you understand how to use a solar inverter sizing calculator effectively.

[Get a quote](#)

200KW 200KVA Solar Power System For Industrial ...

200KW 200KVA Solar Power System For Industrial Commercial Applicable: House solar, agriculture, industry, commercial

solar. German 5S technology, ...

[Get a quote](#)



What Size Inverter Needed for Solar Panels?

The size of the inverter will be determined by the watts of your solar panels. A general rule of thumb is that you will need a 1,000 watt (1kW) ...

[Get a quote](#)

200kW Three-Phase Inverter with XM3 Power Module ...

Wolfspeed's CRD200DA12E-XM is a 200kW three-phase inverter that demonstrates best-in-class system-level power density and efficiency obtained ...

[Get a quote](#)



Energy Storage Inverter Guide: Applications of 30KW, 60KW, ...

60KW Energy Storage Inverter: Best for medium-sized commercial buildings and



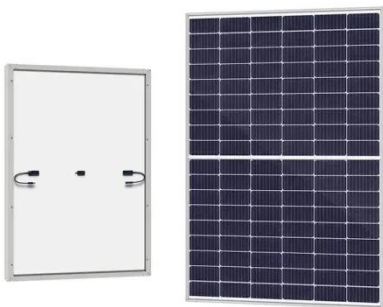
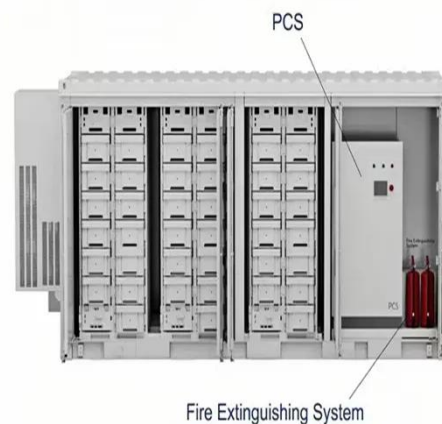
industrial applications, providing more extensive power support. 100KW Energy Storage ...

[Get a quote](#)

How Many Solar Panels Can I Connect to My Inverter?

A solar array can be up to 130% of the inverter capacity. So if you have a 4000 watt inverter you can install a 5200 watt solar power system. With a 5kw inverter, you can have up to 6.5 kw of ...

[Get a quote](#)



How Many Inverters Do I Need? (What You Need)

There are three types of inverters available: the string inverter, the power optimizer, and the micro-inverter. You would only need one inverter when using string or power ...

[Get a quote](#)

The Only Inverter Size Chart You'll Ever Need

During our research, we discovered that most inverters range in size from 300 watts up to over 3000 watts. In this

article, we guide you through the different inverter sizes. ...

[Get a quote](#)



Contact Us

For catalog requests, pricing, or partnerships, please visit:
<https://zenius.co.za>