

## SolarMax Energy Systems

**How many volts should Huawei's photovoltaic inverter be connected to**



## Overview

---

All L1 series inverters feature dual MPPT trackers with a wide operating voltage range of 120V to 600V, allowing for flexible system design and the ability to handle short strings of just 4 panels. How many solar panels can I connect to my inverter?

The maximum number of PV solar panels you can connect to your inverter isn't a fixed number. It depends on the specifications of your particular solar panels and inverter. Specifically, you have to consider the rated power output of the panels and the capacity of your inverter.

Can a 12V inverter be directly connected to a solar panel?

Yes, a 12V inverter can be directly connected to a solar panel. However, the direct connection is not commonly recommended because solar panels do not provide a stable voltage output. To ensure a stable power supply, it's advantageous to use a charge controller between the PV solar panel and the inverter.

What is the maximum input voltage of a solar panel inverter?

The maximum input voltage of a solar panel inverter determines how you should set up your solar panels. Here's an example: If an inverter has a maximum input voltage of 600V and each panel produces 40V, you could connect up to 15 panels in series ( $15 \times 40V = 600V$ ).

Why should I connect my solar panel to an inverter?

Connecting your solar panel to an inverter is important in harnessing solar energy for daily use. An inverter transforms the direct current (DC) electricity produced by the PV solar panels into alternating current (AC) electricity (the standard form used by most home appliances).

How do you connect a 48V inverter to a solar panel?

If you use a 48V inverter, you may follow the same steps as above for

connecting it to the solar panels. However, the way you wire the solar panels together will vary based on your system's design and the voltage of your panels. Here are some possible scenarios: 1. For 12V panels, wire four in series for 48V input.

What type of inverter is used for solar panels?

The type of inverter used for solar panels depends on how it is connected to them. You can use string inverters, microinverters, and power optimizers. Once you have wired your solar panels in the desired configuration, you need to connect them to the inverter using the appropriate connectors and cables. Here are the connection steps to follow:

## How many volts should Huawei s photovoltaic inverter be connected



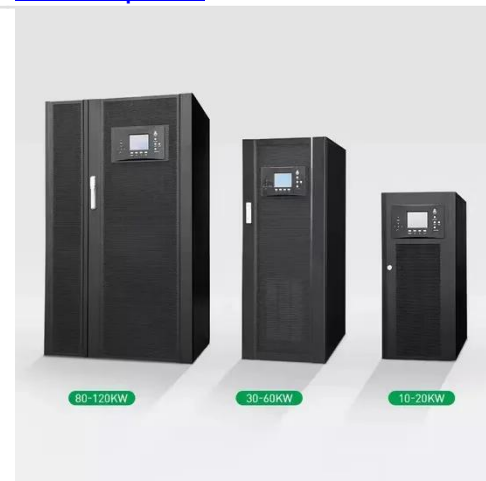
### How to Wire Solar Panels to Inverter: Complete Guide

PV panels generate DC power and an inverter changes that into usable AC electricity. In this guide, we will discuss how to wire solar panels to an inverter in simple steps.

[Get a quote](#)

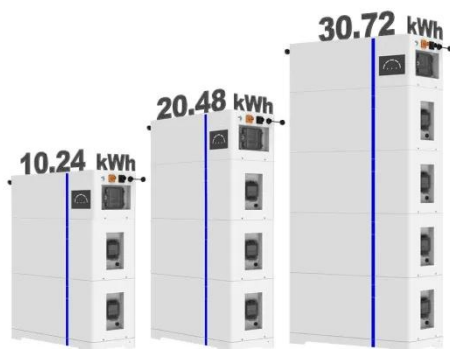
### Detailed explanation of Huawei photovoltaic inverter parameters

This document provides information about the ModBus protocol used in Huawei inverters, and can be used to regulate and restrict follow-up third-party integration R&D and customizations.



[Get a quote](#)

### ESS



### Connecting Cables for Cascaded Inverters

3.1 Connecting Cables for Cascaded Inverters This document provides only the schematic diagram of inverter cascading. For details about communications port definitions ...

[Get a quote](#)

## difference between PV input and MPPT range

this is my solar inverter datasheet i don't get the difference between the MPPT and The PV input voltage my each pv in series should equal to 500v? or to 425?

[Get a quote](#)



## How Many Solar Panels Can I Connect to an Inverter? A ...

This guide will discuss the factors that determine how many solar panels can be connected to an inverter, such as inverter specifications, wiring configurations, and the use of charge controllers.

[Get a quote](#)

## How many volts should I choose for solar photovoltaic ...

Homeowners often choose 24 volts for efficiency as it minimizes losses over longer distances while being compatible with many inverters. This ...

[Get a quote](#)



## How Many Solar Panels Can I Connect to an Inverter?

This guide will discuss the factors that



determine how many solar panels can be connected to an inverter, such as inverter specifications, wiring configurations, ...

[Get a quote](#)

---

## Huawei photovoltaic inverter configuration plan

How many kW can a solar inverter run? For a three-phase solar inverter, the number of PV modules connected in series in a PV string cannot exceed 50 and the maximum power of a PV ...

[Get a quote](#)



## Detailed explanation of Huawei photovoltaic inverter parameters

How much power does a solar inverter need? SOLAR . HUAWEI . COM/EU  
Recommended max. PV power 1 \*1  
Inverter max input PV power is 40,000 Wp when long strings are designed and ...

[Get a quote](#)

---

## Connecting DC Input Power Cables

Before connecting the DC input power cables, ensure that the DC voltage is within the safe range (lower than 60 V DC) and that the three DC switches (DC SWITCH) on the inverter are OFF. ...

[Get a quote](#)



## A Guide to Solar Inverters: How They Work & How to ...

Learn what a solar inverter is, how it works, how different types stack up, and how to choose which kind of inverter for your solar project.

[Get a quote](#)

## Huawei photovoltaic inverter electrical diagram

SOLAR . HUAWEI . COM/EU  
Recommended max. PV power 1 \*1  
Inverter max input PV power is 40,000 Wp when long strings are designed and fully connected with SUN2000-450W-P power ...

[Get a quote](#)



## Understanding Solar Panel Voltage for Better Output

Find out how solar panel voltage affects efficiency and power output in our





comprehensive guide. Get expert insights and tips for optimal ...

[Get a quote](#)

## How to Calculate PV String Size -- Mayfield Renewables

How to manually calculate PV string size for photovoltaic systems based on module, inverter, and site data. Design code-compliant PV systems and follow design best ...

[Get a quote](#)



12 V 10 AH



## Operations Related to the Special User

Ensure that the DC side of the SUN2000 is energized before setting grid parameters, protection parameters, feature parameters, and grid adjustment parameters.

[Get a quote](#)

## Recommended Requirements for Inverter Application

In the PV system, the PV string configuration must meet the inverter configuration requirements for different



inverters to achieve optimal energy yields. This configuration solution lists some ...

[Get a quote](#)



## Huawei photovoltaic inverter electrical diagram

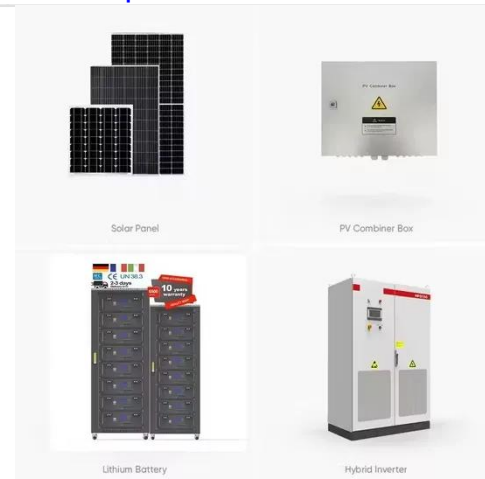
Aside from helping you understand the technical aspects of your PV inverter system, a PV inverter circuit diagram is a great way to learn about the basic principles of solar

[Get a quote](#)

## Ultimate Guide 2023: How to Connect Solar Panel to ...

Learning how to connect solar panel to inverter can save you substantial energy costs while making you less dependent on traditional ...

[Get a quote](#)



## Ultimate Guide 2023: How to Connect Solar Panel to Inverter

Learning how to connect solar panel to inverter can save you substantial energy costs while making you less dependent

on traditional electricity sources. This guide will take ...

[Get a quote](#)



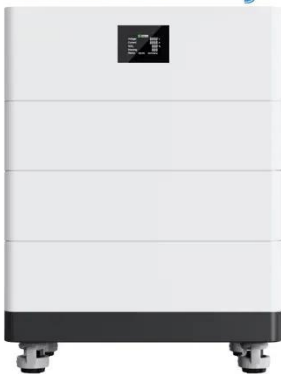
## Huawei Solar Inverter Complete Guide 2025: Models, ...

Comprehensive Huawei solar inverter guide covering SUN2000 series, performance data, pricing, installation tips, and expert reviews. Updated 2025.

[Get a quote](#)



## High Voltage Solar Battery



## Huawei Photovoltaic Grid-Connected Inverter Parameters: The ...

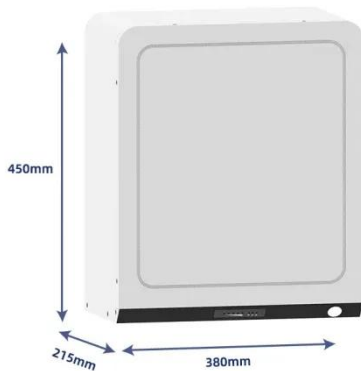
As global energy prices fluctuate, Huawei's grid-tied inverters have become the go-to solution for commercial installations, particularly after their Q1 2025 firmware update addressing dynamic ...

[Get a quote](#)

## Solar Panel Series & Parallel Calculator

Use our solar panel series and parallel calculator to easily find the wiring configuration that maximizes the power output of your solar panels.

[Get a quote](#)



## Huawei Solar Inverter Complete Guide 2025: Models, ...

Are Huawei inverters compatible with all solar panels? Huawei inverters are compatible with most solar panels, provided the panel specifications fall within the inverter's ...

[Get a quote](#)

## The Best Solar Inverter for Efficient Energy Conversion

If you're looking for an eco-friendly alternative to traditional electricity sources, solar energy is an excellent option to consider. However, ...

[Get a quote](#)



## How many volts should I choose for solar photovoltaic panels?

Homeowners often choose 24 volts for



efficiency as it minimizes losses over longer distances while being compatible with many inverters. This configuration strikes a balance ...

[Get a quote](#)

---

## Contact Us

For catalog requests, pricing, or partnerships, please visit:  
<https://zenius.co.za>