

SolarMax Energy Systems

How many watts does the inverter motor have

Nominal Capacity

280Ah

Nominal Energy

50kW/100kWh

IP Grade

IP54



Overview

Before we go any further, we highly recommend that you choose a pure sine wave inverter. This type of inverter delivers high-quality electricity, similar to your utility company. This way, none of your appliances run the risk of being damaged. Now, when it comes to sizing your inverter, you always need to check.

We have summarized the appliances that inverters from 300W to 3000W can run depending on their rated maximum power. Note to our readers: Use the above formula to determine.

How many watts is a power inverter?

Since Power inverters provide two types of ratings (both in watts), it could be confusing at times. Basically, what you are looking for is 300 watts of continuous power.

How to size a 1500 watt power inverter?

A rule-of-thumb for sizing your 1500-watt power inverter is to combine the wattage of all the devices you are planning to use at the same time (don't forget basic necessities, like lights) and give yourself 20% headroom.

What is inverter size?

Inverter size refers to the maximum amount of power that an inverter can handle and convert from DC (Direct Current) to AC (Alternating Current). It is typically measured in watts or kilowatts. The size of the inverter you need depends on the total power consumption of the devices you want to run.

How do I select an inverter that has enough power?

To select an inverter from DonRowe.com that has enough power for your application, add the watts for items you may want to run at the same time. Use the total wattage, plus 20%, as your minimum power requirement. Note: The wattage's given below are estimates. The actual wattage required for your appliances may differ from those listed.

How many watts is a 300 watt inverter?

Basically, what you are looking for is 300 watts of continuous power. The Peak (or surge) power of these types of inverters is usually 600 watts and is meant to be available only for few seconds (since a lot of appliances have a high initial surge of power demand).

How much power does a 400 watt inverter have?

When you connect your 400-watt inverter into the car's lighter port, you will be able to enjoy about 140-170 watts of power (12 volts x 15 amps). "Magic" happens when you connect your inverter directly! This way inverter will give you its full power!

How many watts does the inverter motor have

ESS



12 Volt Battery Run Time Calculator

Do you have a 12v device you need to power but don't know what 12-volt battery you need? For those running a continuous 12-volt load, an adequately sized deep-cycle ...

[Get a quote](#)

How Much Electricity (Amps, Volts & Watts) Do ...

How much electricity do you need to power a sewing machine properly? That's good to know if you have lost the converter, or maybe you want to use the ...

[Get a quote](#)



Find the Right Inverter Size: How Big An Inverter Do You need?

How Much Power Is Enough for an Inverter? The right size inverter for your specific application depends on how much wattage your devices require. This information is ...

[Get a quote](#)

This generator wattage calculator helps you figure out

...

Figuring out how many watts your generator needs isn't always easy. Our generator wattage calculator is here to help plan your next purchase.

[Get a quote](#)



Inverter Size Calculator [Power Inverter, AC, DC, ...

Calculate the ideal inverter size with the Inverter Size Calculator. Perfect for selecting inverters for homes, solar panels, or vehicles based on ...

[Get a quote](#)

How to size an inverter that can run your air conditioner?

The main rating of an inverter is its Continuous Power (in Watts), but with appliances such as air conditioners, refrigerators, pumps, or any ...

[Get a quote](#)



Inverter Size Calculator

Therefore, in this case, an inverter of around 750 watts would be appropriate. It's important to note that a larger inverter will consume more power, even

if the devices you're ...

[Get a quote](#)



What Size Power Inverter Is Needed for a House [Full Guide]

In general, a 3000W to 5000W inverter works well for most homes, but the exact size depends on factors like household appliances, total power consumption, and battery ...

[Get a quote](#)



Power rating of Tesla's different motors

I had a discussion with a power inverter designer in this group some time back. We identified exact parts tesla uses and amp rating as well as the motor ...

[Get a quote](#)

What Can a 2000 Watt Inverter Run?

What Can a 2000 Watt Inverter Run?
Generally, a 2000 watt inverter can run

appliances or a total load of up to 1600 watts. This means a 2000W inverter can run a fridge, ...

[Get a quote](#)



Inverter Amp Draw Calculator

Understanding amperage for different inverter wattages is crucial for safe and effective use. It determines how many devices you can power and how long your inverter can ...

[Get a quote](#)

The Only Inverter Size Chart You'll Ever Need

During our research, we discovered that most inverters range in size from 300 watts up to over 3000 watts. In this article, we guide you through the different inverter sizes.

[Get a quote](#)



Inverter Specifications and Data Sheet

The article provides an overview of inverter functions, key specifications, and common features found in inverter

systems, along with an example of power calculations and inverter ...

[Get a quote](#)



Power Inverter Calculator , Watt Calculator , Go Power!

Which power inverter is right for you? By answering these simple questions, we can recommend a product for you in just a few moments. This calculator helps us identify how much power your ...

[Get a quote](#)



Find the Right Inverter Size: How Big An Inverter Do You need?

When it comes to powering your devices through an inverter, one of the most critical aspects to consider is size--how big an inverter do you need? Whether you're on an ...

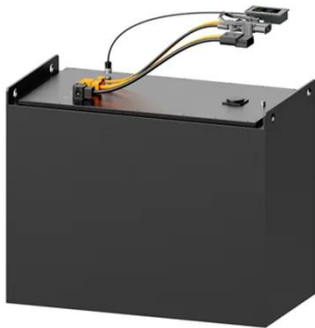
[Get a quote](#)

How Many Watt Inverter Do I Need? , Click to Learn More

If the total power requirement is 800W,

an inverter rated to support 1000W or higher is highly suggested. Many choose inverters that can support the maximum load or the ...

[Get a quote](#)



How Many Watts Does a Fan Use

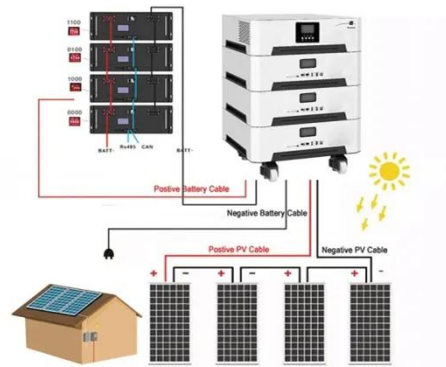
How many watts does a fan use? Let us find out as it will help you to reduce your power consumption. The factors that determine power consumption are speed, size, motor ...

[Get a quote](#)

What Will a 400 Watt Inverter Run?

If you want to run a full 400 watt load for 5 hours, you need at least a 200ah battery. Double the capacity to 400ah if you do not want the battery fully discharged after 5 hours. How many ...

[Get a quote](#)



What Size Inverter do I Need? [with Examples]

Basically, what you are looking for is 300 watts of continuous power. The Peak (or surge) power of these types of inverters

is usually 600 watts and is meant to ...

[Get a quote](#)



Find the Right Inverter Size: How Big An Inverter Do ...

How Much Power Is Enough for an Inverter? The right size inverter for your specific application depends on how much wattage your devices ...

[Get a quote](#)



**LPR Series 19'
Rack Mounted**



What Size Power Inverter Is Needed for a House [Full ...

In general, a 3000W to 5000W inverter works well for most homes, but the exact size depends on factors like household appliances, total power ...

[Get a quote](#)

What Size Inverter do I Need? [with Examples]

Basically, what you are looking for is 300 watts of continuous power. The Peak (or surge) power of these types of inverters

is usually 600 watts and is meant to be available only for few seconds ...

[Get a quote](#)



Usage Chart: How Many Watts Do You Need?

Use the total wattage, plus 20%, as your minimum power requirement. Note: The wattage's given below are estimates. The actual wattage required for your appliances may differ from those ...

[Get a quote](#)

Contact Us

For catalog requests, pricing, or partnerships, please visit:
<https://zenius.co.za>