

## SolarMax Energy Systems

**How many watts of solar panels  
are needed for 20 ah**



## Overview

---

Note: If you already have a solar panel and want to know how long it will take to charge your battery, use our solar battery charge time calculator.

1. Enter battery Capacity in amp-hours (Ah): For a 100ah battery, enter 100. If the battery capacity is mentioned in watt-hours (Wh), divide Wh by the battery's voltage (v). 2. Enter battery.

Follow these 6 steps to calculate the estimated required solar panel size to recharge your battery in desired time frame.

Here's a chart about what size solar panel you need to charge different capacity 24v lead-acid & Lithium (LiFePO4) batteries in 6 peak sun hours using an MPPT charge controller.

Here's a chart about what size solar panel you need to charge different capacity 12v lead-acid and Lithium (LiFePO4) batteries in 6 peak sun hours using an MPPT charge controller.

You need around 40 watts of solar panels to charge a 12V 20ah lead-acid battery from 50% depth of discharge in 4 peak sun hours with an MPPT charge controller. How many watts a solar panel to charge a battery?

You need around 360 watts of solar panels to charge a 12V 100ah Lithium (LiFePO4) battery from 100% depth of discharge in 4 peak sun hours with an MPPT charge controller. What Size Solar Panel To Charge 50Ah Battery?

.

How many solar panels do I need to charge a 50Ah battery?

You need around 180 watts of solar panels to charge a 12V 50ah Lithium (LiFePO4) battery from 100% depth of discharge in 4 peak sun hours with an MPPT charge controller. Related Post: How Long Will A 50Ah Battery Last?

.

How many watts of solar panels do I Need?

You need around 800-1000 watts of solar panels to charge most of the 48V lead-acid batteries from 50% depth of discharge in 6 peak sun hours with an MPPT charge controller. You need around 1600-2000 watts of solar panels to charge most of the 48V lithium batteries from 100% depth of discharge in 6 peak sun hours with an MPPT charge controller.

How many watts do I need to charge a 12V 20Ah battery?

You need around 40 watts of solar panels to charge a 12V 20ah lead-acid battery from 50% depth of discharge in 4 peak sun hours with an MPPT charge controller. You need around 70 watts of solar panels to charge a 12V 20ah Lithium (LiFePO4) battery from 100% depth of discharge in 4 peak sun hours with an MPPT charge controller.

How many watts a solar panel to charge 130ah battery?

You need around 380 watts of solar panels to charge a 12V 130ah Lithium (LiFePO4) battery from 100% depth in 5 peak sun hours with an MPPT charge controller. What Size Solar Panel To Charge 140Ah Battery?

.

What size solar panel to charge 12V battery?

You want a solar panel that will charge your battery in 16 peak sun hours. To find out what size solar panel you need, you'd simply plug the following into the calculator: Turns out, you need a 100 watt solar panel to charge a 12V 100Ah lithium battery in 16 peak sun hours with an MPPT charge controller.

## How many watts of solar panels are needed for 20 ah

---



### How to Calculate Solar Panels Needed to Charge Batteries: A

...

Calculation Steps: Follow a step-by-step approach to determine energy needs, battery size, and the required number of solar panels for optimal charging. Utilize Tools: Make ...

[Get a quote](#)

---

## Solar Battery Charge Time Calculator (12v, 24v, 48v)

1. Enter the total solar system size in watts: If you have multiple solar panels connected together, add their rated wattage and enter the total ...



[Get a quote](#)

---



### How Many Solar Panels to Charge 4 Batteries?

In most solar power systems, the batteries run the appliances and the solar panels recharge the batteries. So you have to know how many solar panels are going to be needed for the charge, ...

[Get a quote](#)

---

## Solar Panel Wattage Calculator

Determining the required wattage for your solar panel system involves several key considerations: Energy consumption: Calculate your average daily electricity

...

[Get a quote](#)



## How to Calculate Solar Panel for Battery Charging: A Step-by ...

To size a solar panel for battery charging, assess the battery capacity in amp-hours (Ah) and calculate daily energy needs in watt-hours. Factor in charging efficiency losses ...

[Get a quote](#)

## What Size Charge Controller You Need (Calculated)

A 10A PWM charge controller can support a 120 W solar array to charge a 12 V battery bank ( $120\text{W}/12\text{V} = 10\text{A}$ ) or it can support a 240 W solar ...



[Get a quote](#)

## How Many Solar Panels To Charge A 200Ah Lithium Battery: Size And Watts

To charge a 200Ah battery, the number

of solar panels depends on the system voltage. For a 12V system with two 100Ah batteries, use four 120W solar panels. For a 24V ...

[Get a quote](#)



## What Size Solar Panel To Charge 100Ah Battery?

To adequately calculate the size of the solar panel to fully charge any 100Ah battery, we have to take a 2-step approach. Calculate how much juice solar ...

[Get a quote](#)



## How do I calculate how many batteries I need?

Batteries come in discrete sizes: 18 Ah, 100 Ah, 200 Ah and so forth. When you need more stored energy than can fit in a single battery it is common to put batteries in series ...

[Get a quote](#)



## What Size Solar Panel Do I Need to Charge a 12v Battery?

For instance, a 100Ah battery would typically require a 150 to 200-watt solar panel to ensure efficient charging. Let's



break down the calculation process with a practical example. Consider ...

[Get a quote](#)



## Solar Panel Wattage Calculator

Determining the required wattage for your solar panel system involves several key considerations: Energy consumption: Calculate your average daily electricity usage in kilowatt-hours (kWh) ...

[Get a quote](#)

## How many solar panels do I need for charge the 220 AH battery?

Calculate the total watt-hours (WH) of energy needed to charge the battery: Multiply the battery voltage by the battery capacity in Ah:  $WH = \text{Voltage (V)} \times \text{Capacity (Ah)}$   $WH = 12 \text{ V} \times 220 \text{ Ah} = 2640 \text{ WH}$  ...

[Get a quote](#)



## Solar Panel Output Calculator , Get Maximum Power ...

Use Solar Panel Output Calculator to find



out the total output, production, or power generation from your solar panels per day, month, or in ...

[Get a quote](#)

---

## What Wattage Solar Panel is Required to Charge a ...

To charge a 150Ah battery of 12 volts, you'll need 1800 Wh of energy and a minimum of 360 watts from solar panels to charge the battery. You can use ...

[Get a quote](#)



---

## Solar Panel Size Calculator

You need around 70 watts of solar panels to charge a 12V 20ah Lithium (LiFePO4) battery from 100% depth of discharge in 4 peak sun hours with an MPPT charge controller.

[Get a quote](#)

---

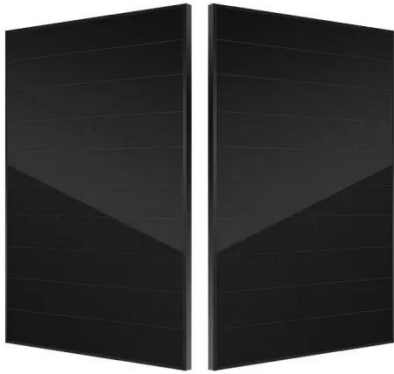
## Solar Panel And Battery Sizing Calculator

The result will estimate how many panels you need to meet your energy goals. Enter the battery storage



capacity, allowing the calculator to recommend how many batteries ...

[Get a quote](#)



## Solar Panel Calculator: How Many Do You Need?

Solar panel sizes are measured in Watts (W), which is a rate of electrical flow. We'll use your energy use in Watt-hours to determine how ...

[Get a quote](#)

## How many watts of solar panels do I need for a 20ah battery?

By meticulously evaluating these aspects, one can determine the optimal solar panel wattage to effectively charge a 20Ah battery, leading to a well-functioning solar setup ...

[Get a quote](#)



## What Size Battery for 200W Solar Panel? (Explained!) ...

What Size Battery For 200 watt Solar Panel? What size battery you need, will

depend on the total power production of your solar panels. And ...

[Get a quote](#)



## What Size Solar Panel To Charge 100Ah Battery? (Calculator)

To adequately calculate the size of the solar panel to fully charge any 100Ah battery, we have to take a 2-step approach. Calculate how much juice solar panels have to add to the battery. This ...

[Get a quote](#)



## What Size Solar Panel Do I Need to Charge a 12v ...

For instance, a 100Ah battery would typically require a 150 to 200-watt solar panel to ensure efficient charging. Let's break down the calculation process with a ...

[Get a quote](#)

## Solar Panel Calculator: How Many Do You Need?

Solar panel sizes are measured in Watts (W), which is a rate of electrical flow. We'll use your energy use in Watt-hours to determine how many Watts of solar panels you ...

[Get a quote](#)



## How many watts of solar panels do I need for a 20ah ...

By meticulously evaluating these aspects, one can determine the optimal solar panel wattage to effectively charge a 20Ah battery, leading to a ...

[Get a quote](#)

## What Size Solar Panel to Charge 12V Battery?

Find out what size solar panel you need to charge a 12V battery FAST -- including 50Ah, 100Ah, 200Ah car, lithium, and deep cycle batteries.

[Get a quote](#)

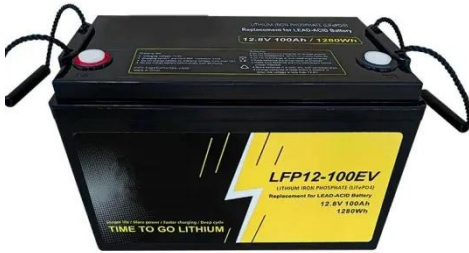


## How many watts of solar panel does a 600 Ah battery ...

To determine how many watts of solar panels are necessary for a 600 Ah battery, the answer involves

understanding multiple factors, including ...

[Get a quote](#)



---

## How Many Solar Panels Do You Need to Charge a 12 Volt Battery?

Learn how many solar panels are required to charge a 12V battery and factors that impact solar panel efficiency and battery charging.

[Get a quote](#)



---

## Contact Us

For catalog requests, pricing, or partnerships, please visit:  
<https://zenius.co.za>