

## SolarMax Energy Systems

# How much watts of electricity does a mobile base station device use

ESS



## Overview

---

The power consumption of a single 5G station is 2.5 to 3.5 times higher than that of a single 4G station. The main factor behind this increase in 5G power consumption is the high power usage of the active antenna unit (AAU). Under a full workload, a single station uses nearly 3700W. How do base stations affect mobile cellular network power consumption?

Base stations represent the main contributor to the energy consumption of a mobile cellular network. Since traffic load in mobile networks significantly varies during a working or weekend day, it is important to quantify the influence of these variations on the base station power consumption.

How much power does a 5G station use?

The power consumption of a single 5G station is 2.5 to 3.5 times higher than that of a single 4G station. The main factor behind this increase in 5G power consumption is the high power usage of the active antenna unit (AAU). Under a full workload, a single station uses nearly 3700W.

Is there a direct relationship between base station traffic load and power consumption?

The real data in terms of the power consumption and traffic load have been obtained from continuous measurements performed on a fully operated base station site. Measurements show the existence of a direct relationship between base station traffic load and power consumption.

How much power does a BBU use?

Data shows the power of the BBU is relatively stable and is affected very little by the workload, while AAU is opposite, with power consumption growing as the load increases. With S111 configuration and 100% load, the power consumption of a single station can even reach 3852.5W.

What is the largest energy consumer in a base station?

The largest energy consumer in the BS is the power amplifier, which has a share of around 65% of the total energy consumption . Of the other base station elements, significant energy consumers are: air conditioning (17.5%), digital signal processing (10%) and AC/DC conversion elements (7.5%) .

How much power does a radio network use?

This consumption is vast, and on the level of the operator's radio access part of the network, equals approximately 7,700.54 MW. Translated into financial costs, this corresponds to the amazing amount of approximately 5.3 million euros that the operator pays to the electricity supply company.

### 6.3. Reactive Site Power Consumption

## How much watts of electricity does a mobile base station device use

---



### Power Consumption of Typical Household Appliances

The best way to compare the cost of running different appliances is to look at their power consumption, which is a measure of how much power they use in Watts. ...

[Get a quote](#)

### What's enough power for a base station? : r/gmrs

Like on the 2m band I'd say 50 watts is plenty, 75 watts is a hell of a lot, and 100 watts is for high up repeaters with important jobs. Just my own \$0.02 on that but it tracks with ...

[Get a quote](#)



### Measurements and Modelling of Base Station Power Consumption under Real

Base stations represent the main contributor to the energy consumption of a mobile cellular network. Since traffic load in mobile networks significantly varies during a working or weekend ...

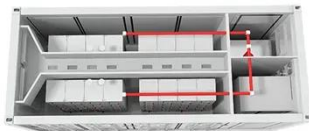
[Get a quote](#)



## Why bother to have a high power base station when mobile units ...

But the base station transmits a lot more power, and this compensates somewhat for the lack of diversity. The phone is about 1W, but if it's close to the base station, it may be ...

[Get a quote](#)



## How Much Power Does 5G Base Station Consume? , HuiJue ...

Have you ever wondered how much energy our hyper-connected world is consuming? 5G base stations, the backbone of next-gen connectivity, now draw 3-4 times more power than their 4G ...

[Get a quote](#)

## A technical look at 5G energy consumption and performance

To understand this, we need to look closer at the base station power consumption characteristics (Figure 3). The model shows that there is significant energy consumption in the ...

[Get a quote](#)



## Electricity Calculator: Power Consumption kWh ...

This guide will help you take control of your electricity costs by teaching you

how to calculate your monthly energy consumption and estimate ...

[Get a quote](#)

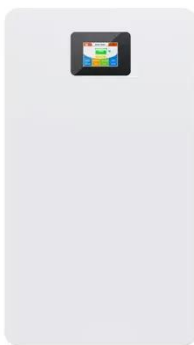
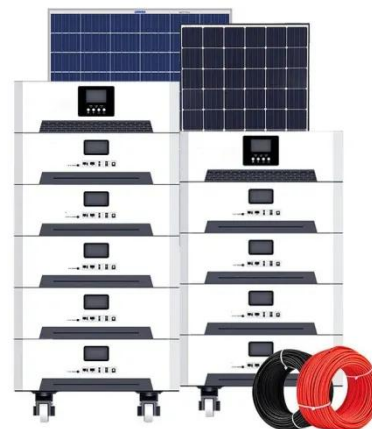


---

## How to Select the Right Size Portable Power Station ...

In this article, we'll guide you through how to select the correct portable power station based on the required wattage to power select appliances and devices.

[Get a quote](#)



## A technical look at 5G energy consumption and performance

Base stations represent the main contributor to the energy consumption of a mobile cellular network. Since traffic load in mobile networks significantly varies during a working or weekend ...

[Get a quote](#)

---

## Measurements and Modelling of Base Station Power Consumption under Real

Abstract Base stations represent the main contributor to the energy

consumption of a mobile cellular network. Since traffic load in mobile networks significantly varies during a working or ...

[Get a quote](#)



## Mobile Charger Power Consumption Calculation

Mobile charger power consumption: The charger is the device used to charge your mobile phone batteries. It is the most mandatory device for day to day life for everyone. The capacity of the ...

[Get a quote](#)

## Front Line Data Study about 5G Power Consumption

The power consumption of a single 5G station is 2.5 to 3.5 times higher than that of a single 4G station. The main factor behind this increase in 5G power consumption is the high power ...

[Get a quote](#)



## What is the Power Consumption of a 5G Base Station?

Ericsson has been able to innovate a 5G





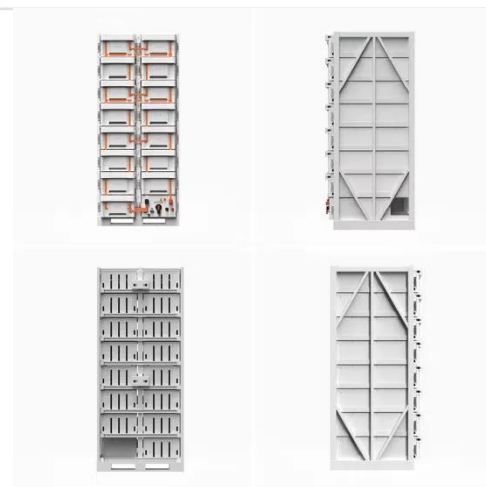
base station that consumes only 20% energy when the traffic is low compared to a normal setup. This achieves through advanced ...

[Get a quote](#)

## Cell phone power consumption and electricity cost

The electricity usage can be calculated by multiplying the power consumption (Watts) by how long the mobile charger is in use. If a mobile ...

[Get a quote](#)



## Docking Station Power Consumption & Electricity Cost Calculator ...

Docking Station Power Consumption, Wattage, and Cost Calculator Use our Docking Station calculator to determine the power consumption, wattage, and running cost for 8 hours. ...

[Get a quote](#)

## What's enough power for a base station? : r/gmrs

Like on the 2m band I'd say 50 watts is plenty, 75 watts is a hell of a lot, and



100 watts is for high up repeaters with important jobs. Just my own \$0.02 on that but it tracks with my experience.

[Get a quote](#)



## BfS

on the transmission frequency, on the way it is used as well as on the actual transmitter output power of the device. Compared to the field strengths generated by mobile phone base ...

[Get a quote](#)

## Cordless Phone Base Station Power Consumption & Electricity ...

Use our Cordless Phone Base Station calculator to determine the power consumption, wattage, and running cost for 4.5 hours. Calculate how this 5-watt appliance impacts your electricity bill, ...

[Get a quote](#)



## How Much Electricity Does an Electric Fan Use?

But more on that later! How Much Electricity Does a Fan Use? As



mentioned earlier, different electric fans consume varying amounts of electricity. But that ...

[Get a quote](#)

---

## How Much Power Does a 5G Base Station Consume? - Smart Solar

On average, a 5G base station consumes between 1,000 to 3,000 watts. This is significantly higher than 4G base stations, which typically consume 500 to 1,500 watts.

[Get a quote](#)



---

## Contact Us

For catalog requests, pricing, or partnerships, please visit:  
<https://zenius.co.za>