

## SolarMax Energy Systems

# How to charge the batteries in a DC battery cabinet



## Overview

---

What are battery charging cabinets?

Battery charging cabinets are a type of safety cabinet that's designed especially for lithium-ion batteries. Over the recent years, as the prevalence of lithium-ion batteries has grown in workplaces, battery cabinets have become more popular due to the many risk control measures that they provide.

How do I choose a lithium battery charging cabinet?

When selecting a lithium battery charging cabinet, consider the following factors: Choose a charging cabinet with enough storage space and built-in electrical systems that provide multiple power outlets for simultaneous charging. Opt for a fireproof battery charging cabinet with thermal insulation and fire-resistant materials to enhance safety.

How do you charge a 120 volt battery?

Follow the charging directions that come with the charger. Pretty much all batteries use DC power to charge, but most convert it from an AC power supply. In most cases, 120-volt AC current is run from a wall outlet into a power supply that converts it into low-voltage, low-amperage DC current.

How do you charge a car battery with a DC/AC inverter?

Get a DC/AC inverter, which turns DC power into the same 115 to 120 volt AC current that comes out of wall plugs. Follow the links below for car and boat DC/AC inverters. Get a standard AC battery charger and put the battery in. Plug it into the wall and turn it on. Follow the charging directions that come with the charger.

How do you convert a 120 volt battery to a DC power supply?

In most cases, 120-volt AC current is run from a wall outlet into a power supply that converts it into low-voltage, low-amperage DC current. A charger that uses a DC power supply instead will usually convert the power into AC,

then turn it back into DC in whatever voltage your batteries need. Determine the voltage of your power source.

Can You charge a marine battery indoors?

Marine batteries often use 24 V DC. USB also uses DC, but it gets that power from a wall socket anyway. If you want to charge batteries indoors where there are wall sockets available, it is more efficient to buy a conventional plug-in charger. Look at the voltage requirements for the battery you are charging.

## How to charge the batteries in a DC battery cabinet

---



### How To Charge almost any Rechargeable Battery using an Adjustable DC

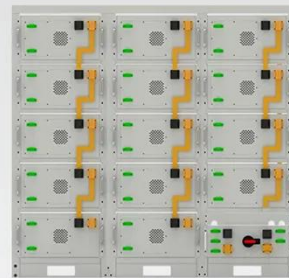
I show how you can use one of those DC adjustable Bench Power supplies to charge Almost any Rechargeable Battery. I go through All the settings on the power supply and explain how it can be used

[Get a quote](#)

### UPS Battery Cabinets

..40 Introduction This manual contains information intended to help owners and operators understand how to safely and properly prepare, install, and operate ZincFive batteries. To ...

[Get a quote](#)



**Battery String-S224**

- 1C Charge/Discharge
- Easy configuration and maintenance
- Power supply can be single battery string or parallel battery strings

### Lithium Ion Battery Charging Cabinets

Justrite's Lithium-Ion battery Charging Safety Cabinet is engineered to charge and store lithium batteries safely. Made with a proprietary 9-layer ...

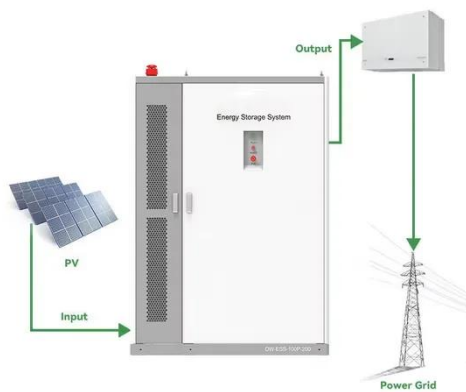
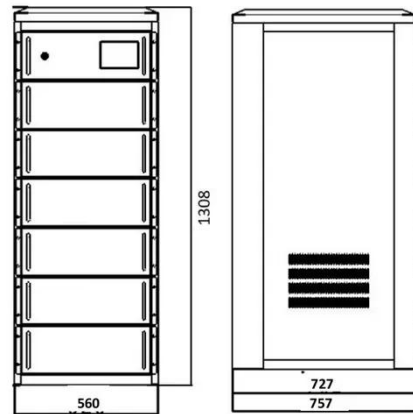
[Get a quote](#)



## Lithium-ion Battery Cabinets - Storemasta

A battery cabinet is a particular type of storage cabinet that reduces the risks associated with lithium-ion batteries. These innovative cabinets create a safer ...

[Get a quote](#)



## How to Charge a Battery Using a DC Power Supply

Get a standard AC battery charger and put the battery in. Plug it into the wall and turn it on. Follow the charging directions that come with the charger. Pretty much all batteries use DC power to ...

[Get a quote](#)

## How to Connect and Charge Lithium Batteries?

It means one battery is charging faster than the others, potentially causing insufficient capacity or shortening the lifespan of one or more batteries. ...

[Get a quote](#)



## Battery Cabinet

If the cabinet is equipped with a battery charger, AC power must be provided. The battery cabinet may be equipped



with a pre-terminated AC power cord, an inlet socket for a molded cord or a ...

[Get a quote](#)

## How to do UPS Battery Wiring?

A. Determine the location of the battery switch, the positive and negative directions of the batteries in the battery cabinet, and install the air switch and ...

[Get a quote](#)



## Battery cabinet for safely charging lithium-ion batteries

...

With a Batteryguard battery cabinet, you charge and store your batteries with complete peace of mind. You protect your staff, prevent damage, and meet ...

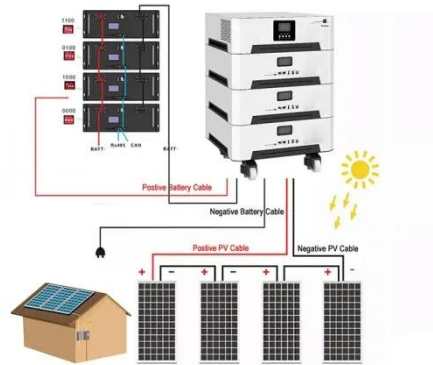
[Get a quote](#)

## Why you shouldn't charge lithium-ion batteries in a safety cabinet

And why is a safety cabinet - also known as a flammable storage cabinet - not the

safest option? In this blog, we explain how to charge your batteries in a reliable and safe ...

[Get a quote](#)



## How To Charge almost any Rechargeable Battery using an Adjustable DC

I show how you can use one of those DC adjustable Bench Power supplies to charge Almost any Rechargeable Battery.

[Get a quote](#)

## BC58 Battery Cabinet Installation, Operation, & Maintenance ...

Battery cabinets that are not supplied with an incorporated DC output disconnect device must have an appropriate disconnect device provided external to the cabinet.

[Get a quote](#)



## The Ultimate Guide to Battery Charging Cabinets: Safe Storage ...





Discover the importance of battery charging cabinets for safe lithium-ion battery storage. Learn about key features, benefits, and best practices for workplace safety.

[Get a quote](#)

---

## Battery Cabinets for Uninterrupted Power Supply (UPS)

Battery Cabinets Through cutting-edge research and innovation, advanced engineered power products for backup battery cabinets have become essential to our energy future. When the ...

[Get a quote](#)



## Why you shouldn't charge lithium-ion batteries in a ...

And why is a safety cabinet - also known as a flammable storage cabinet - not the safest option? In this blog, we explain how to charge your ...

[Get a quote](#)

---

## How to Recharge Batteries with a DC Power Supply

All that is needed to recharge battery cells is DC current. With DC current,



electrons will flow back into the battery, establishing the electric potential, or voltage, that a battery was meant to have ...

[Get a quote](#)



## How to Connect and Charge Lithium Batteries?

It means one battery is charging faster than the others, potentially causing insufficient capacity or shortening the lifespan of one or more batteries. Therefore we recommend to add a Battery ...

[Get a quote](#)

## Sidewalk E-Bike Battery Swapping and Charging Cabinets 101:

Battery swapping and battery charging cabinets are compact, vending-machine-sized stations designed to charge multiple electric micromobility batteries safely and securely. A battery ...

[Get a quote](#)



## Storing Lithium Ion Batteries - Safe Charging Cabinets , Justrite

## ESS



Storing li-ion batteries in the workplace can be dangerous if proper conditions aren't maintained. Learn more about proper battery storage & charging.

[Get a quote](#)

---

## The Ultimate Guide to Battery Charging Cabinets: ...

Discover the importance of battery charging cabinets for safe lithium-ion battery storage. Learn about key features, benefits, and best practices for workplace ...



[Get a quote](#)



## Understanding DC Charging: Optimal Usage and Timing

Unraveling the Mysteries of DC Charging  
Ever wonder whether there's a secret art to charging your gadgets? Well, if your device supports DC ...

[Get a quote](#)

---

## UPS Battery Cabinets

ZincFive BC Series UPS Battery Cabinet  
Introduction Each ZincFive BC Series UPS Battery Cabinet features ZincFive's patented Nickel-Zinc batteries and a

built-in battery monitoring ...

[Get a quote](#)



## How to Recharge Batteries with a DC Power Supply

All that is needed to recharge battery cells is DC current. With DC current, electrons will flow back into the battery, establishing the electric potential, or ...

[Get a quote](#)

## Many papers and presentations have discussed the reliability ...

For battery installations on open racks on ungrounded systems (typical for 120 volt and UPS batteries), the potential for arc flash concerns rest mainly with the main battery terminals.

[Get a quote](#)



## Sens EnerGenius DC Installation & Operation Manual

When charging batteries, charge LEAD-



ACID, LIQUID ELECTROLYTE NICKEL-CADMIUM, NICKEL- ZINC or SODIUM-CHLORIDE batteries only. Consult SENS before using with any ...

[Get a quote](#)

---

## Contact Us

For catalog requests, pricing, or partnerships, please visit:  
<https://zenius.co.za>