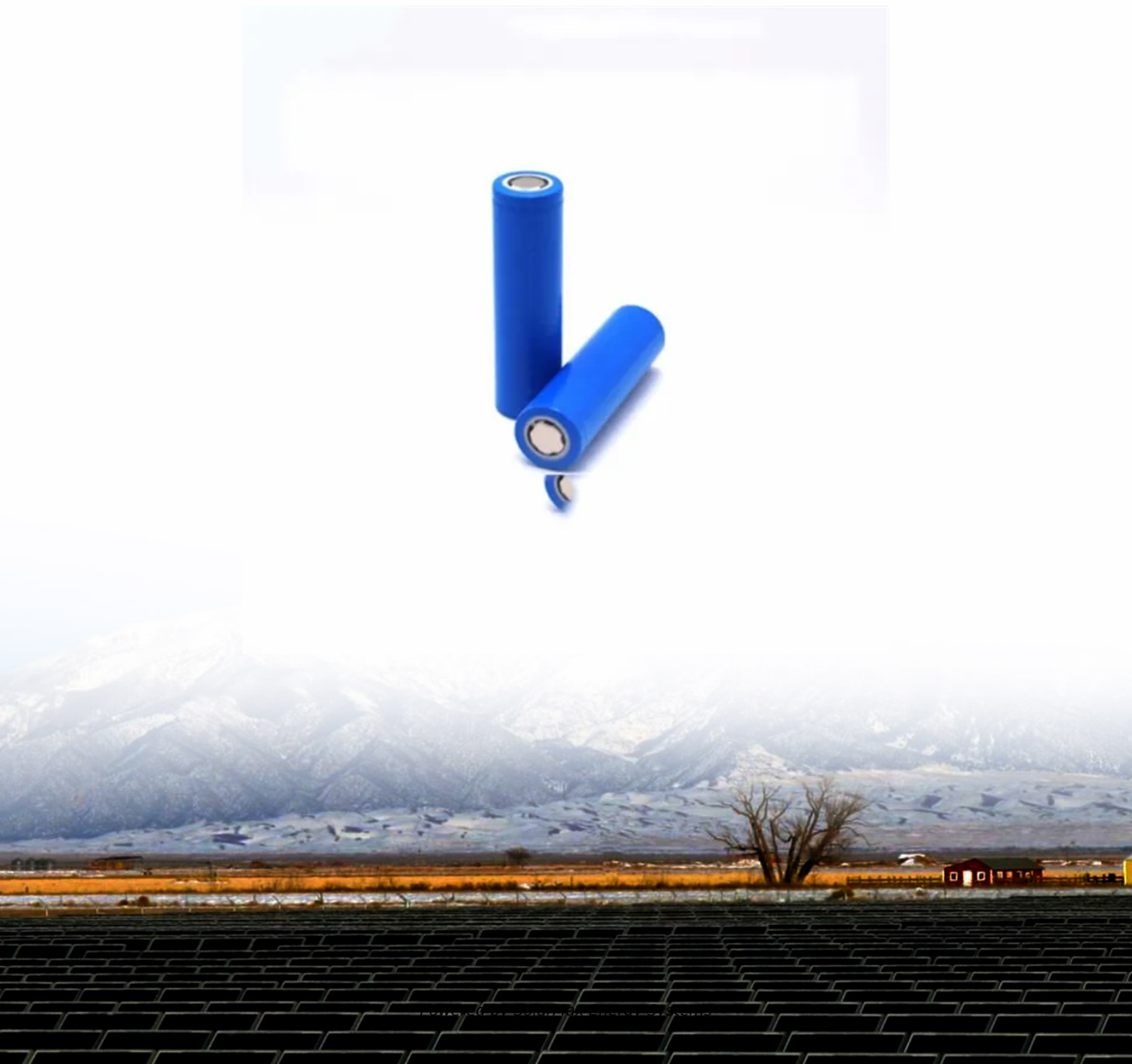


SolarMax Energy Systems

How to replace the battery of the base station power supply



Overview

How do you replace a battery in a base station?

To replace batteries in a SimpliSafe base station, rotate the base counterclockwise (CCW) to remove it, then remove the batteries and replace them while ensuring the (-) and (+) orientation. When disposing of NiMH batteries, they should be recycled.

What batteries do I need to replace my SimpliSafe base station?

To replace the batteries in your SimpliSafe base station, you need QTY (4) AA nickel-metal hydride (NiMH) rechargeable batteries. Do not use Alkaline or any other non-NiMH batteries. The batteries supplied from SimpliSafe are rated at 1000mAh capacity (very low).

How many batteries does the base station take?

The Base Station takes four (4) 1.2V, 1300mAh nickel-metal hydride (NiMH) rechargeable batteries. Regular alkaline batteries should never be inserted into the Base Station, as they may damage the device. Once you have acquired the necessary NiMH rechargeable batteries, you can follow the steps below to replace them:.

What type of batteries are used in the base station?

Inside the bottom of the base station are QTY (4) AA nickel-metal hydride rechargeable batteries (abbreviated NiMH or Ni-MH). Note, being RECHARGEABLE, there is a good chance that if you just keep the power on for several hours, they will be recharged.

How do you remove a NiMH battery from a base station?

Remove the power plug from the bottom of the base station to expose one screw. Remove the screw, rotate the base counterclockwise, and it will pull off. Remove the NiMH batteries and replace them while ensuring the correct (-) and (+) orientation. When disposing of NiMH batteries, they should be

recycled.

How do I replace a NiMH rechargeable battery?

Once you have acquired the necessary NiMH rechargeable batteries, you can follow the steps below to replace them: NEVER insert regular alkaline batteries into the Base Station as they may damage the device. Plug your Base Station back into power. Was this helpful?

How to replace the battery of the base station power supply



How to Change Battery of a Portable Power Station?

The process involves a few simple steps, such as turning off the power station, locating the battery compartment, removing screws and ...

[Get a quote](#)

Base station power plug fix / questions.. : r/simplisafe

Re: Base station power plug fix - My adapter would turn off & on also. At first I thought it was the same problem (adapter was bad) but when I twisted & removed the plastic cover from the top ...



[Get a quote](#)



Base batteries not charging , SimpliSafe Support Home

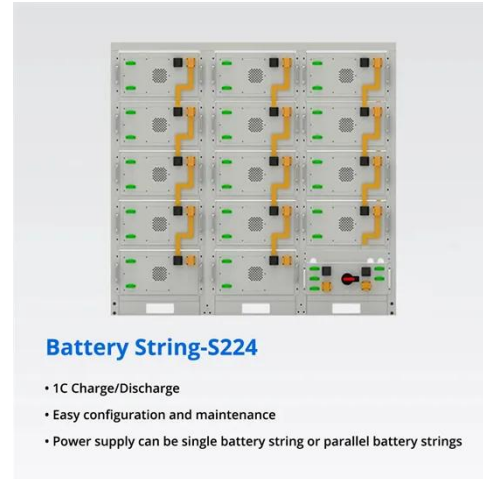
If it detects an issue, you'll get the warning "Battery Failure - Base Station Batteries are not charging". To resolve the issue, you'll want to access the battery compartment to ...

[Get a quote](#)

Power Base Station

Base station power refers to the output power level of base stations, which is defined by specific maximum limits (24 dBm for Local Area base stations and 20 dBm for Home base stations) ...

[Get a quote](#)



Ring Alarm Base Station Replacement Checklist

To make sure you don't miss anything, we've created this short checklist to help you confirm that your Ring Alarm is set up correctly and is ready to go. Base Station replacement checklist ...

[Get a quote](#)

SimpliSafe Battery Guide: Battery Life and Replacement Tips

In conclusion, removing the battery from your SimpliSafe base station is a simple process that should take no more than 10 minutes to ...

[Get a quote](#)



CB Radio Power Supply Options For Base Station Setups.

Erik from Farpoint Farms Covers 3 cheap



options for using your mobile CB or HAM radio setup as a base station. ** One Option I didn't cover is the use of a car or motorcycle battery hooked up to a

[Get a quote](#)

Can You Replace the Battery in a Portable Power Station?

Yes, you can replace the battery in most portable power stations--but there's a catch. Imagine being stranded during a blackout only to discover your power station's battery ...



[Get a quote](#)

Test certification
CE FCC



Replacing My Base Station and Transfer Service to a New Base Station

There may be a point where you will need to transfer your system and service to a new or different Base Station, such as replacing a faulty Base Station or transferring to a new Base Station ...

[Get a quote](#)

How to Remove Battery from Simplisafe Base Station

In conclusion, removing the battery from

your SimpliSafe base station is a simple process that should take no more than 10 minutes to complete. With these easy steps, you ...

[Get a quote](#)



How to Remove SimpliSafe Base Station Battery?

By following these steps, you can easily maintain and replace the battery in your SimpliSafe base station, ensuring uninterrupted security for your home or ...

[Get a quote](#)

How To Replace Base Station Batteries , SimpliSafe Support Home

You will likely never need to replace your Base Station's batteries as they are rechargeable and meant to last. The Base Station takes four (4) 1.2V, 1300mAh nickel-metal hydride (NiMH) ...

[Get a quote](#)



SimpliSafe Battery Guide: Battery Life and Replacement Tips



Except for the base station, which requires a rechargeable battery,* and the SimpliCam, which works only with a hardwired power supply, below is a detailed list of how ...

[Get a quote](#)

How To Replace Base Station Batteries , SimpliSafe ...

You will likely never need to replace your Base Station's batteries as they are rechargeable and meant to last. The Base Station takes four (4) 1.2V, ...



[Get a quote](#)



DECT IP Phone W73P

If you choose method a, use Yealink supplied power adapter (5V/0.6A). A third-party power adapter may damage the base station. If you choose method b, you do not need to connect ...

[Get a quote](#)

How to Change Battery of a Portable Power Station? 7 Steps

The process involves a few simple steps, such as turning off the power station,

locating the battery compartment,
removing screws and fasteners,
disconnecting the old ...

[Get a quote](#)



How to Replace Your PS5 Power Supply? A Step-by-Step Guide by Replace Base

Replace Base supply cell phone replacement parts, tools and accessories for consumers and B2B, with over 13k SKUs covering devices from drones to phones we have ...

[Get a quote](#)

RING BASE STATION USER MANUAL Pdf Download , ManualsLib

View and Download ring Base Station user manual online. Kit Security Basics. Base Station security system pdf manual download. Also for: Alarm, Contact sensor, Motion detector, ...

[Get a quote](#)



SimpliSafe battery life and replacement tips , Digital ...



With the exception of the base station and keyfob, the user does all battery replacements. Those two accessories require you to contact support to ...

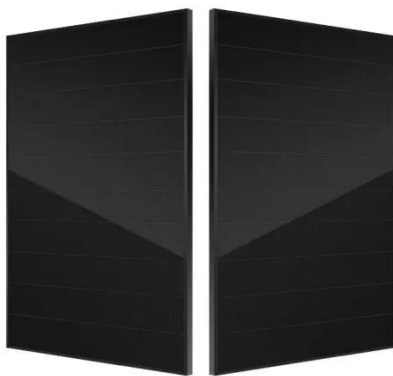
[Get a quote](#)

PlayStation 5 Power Supply Replacement

Follow this guide to remove and replace the power supply on a PlayStation 5. Before you begin, completely power down and unplug all cables from



[Get a quote](#)



?Changing batteries in base station , SimpliSafe Support Home

But if you ever need to replace your Base Station's batteries, you can find a step-by-step guide here. IMPORTANT: Please make sure that you use NiMH (nickel-metal hydride) ...

[Get a quote](#)

How to Remove SimpliSafe Base Station Battery? (Step-by-Step ...

By following these steps, you can easily

maintain and replace the battery in your SimpliSafe base station, ensuring uninterrupted security for your home or business.

[Get a quote](#)



How do you reboot SimpliSafe base station?

Simply unplug the power cord to your Base Station and, while unplugged, remove a battery (you'll need a screwdriver to get to the battery compartment). Wait a few seconds, and then put the ...

[Get a quote](#)

How to Remove Battery from SimpliSafe Base Station

Learn the step-by-step process to safely remove the battery from your SimpliSafe Base Station. Ensure your security system stays functional and efficient.

[Get a quote](#)



Jump Starter Power Station Teardown

Find trusted repair shops near you that can help get your product back in

working order quickly and reliably. This teardown is not a repair guide. ...

[Get a quote](#)



Jump Starter Power Station Teardown

Find trusted repair shops near you that can help get your product back in working order quickly and reliably. This teardown is not a repair guide. To repair your Jump Starter ...

[Get a quote](#)



Base batteries not charging , SimpliSafe Support Home

If it detects an issue, you'll get the warning "Battery Failure - Base Station Batteries are not charging". To resolve the issue, you'll want to access ...

[Get a quote](#)

Replacement Parts , Wyze Smart Home Technology

Wyze smart home cameras offer 1080p to 4K video quality with advanced motion detection and alerts. Safe for

indoor and outdoor use. Wireless battery-powered cams available. Build your ...

[Get a quote](#)



Contact Us

For catalog requests, pricing, or partnerships, please visit:
<https://zenius.co.za>