

## SolarMax Energy Systems

# Is the inverter power normal



## Overview

---

What is normal inverter efficiency?

In normal inverters, efficiency refers to the fact of how much DC is converted into AC under certain circumstances and output levels. Normal or power inverter efficiency depends on inverter load power capacity variation.

What is the difference between solar and normal inverter?

On the other hand, normal inverters derive power from connected batteries, convert it from DC to AC, and then supply it to appliances. So, today you discovered different points related to solar inverter Vs normal inverter. Even with the same purpose, solar and normal inverters have other power sources.

How much power does an inverter draw from a battery?

The amount of power drawn from a battery by an inverter, even when there is no load attached, is called the "idle" or "no-load" consumption of the inverter. The average draw from the batteries when an inverter is turned on with no load attached depends on the efficiency of the inverter and its standby power consumption.

Does an inverter need a lot of power?

Yes, but the amount drained depends on the inverter size and design. The more modern the inverter, the more power you save. A 90% efficient inverter means it requires 10% more power than what its load requires. If you run a 300 watt load for instance, the inverter will need 330 watts.

What is inverter no load current?

The inverter no load current should not be confused with inverter efficiency, which determines how much power is converted by the system. In an off grid system, the inverter transforms DC into AC power so that it is compatible with home appliances. Some of the power will be lost during the conversion, though the amount varies.

What makes a good inverter generator?

An inverter generator tends to deliver power that's "cleaner," with more consistent voltage, which is reflected in the power quality test in our ratings. All of the recommended models have earned our highest score for power quality, while some of the conventional generators that we recommend score slightly below that.

## Is the inverter power normal

---



### Pros and Cons of Inverter Generators

Consumer Reports' expert, independent tests find that inverter generators run longer, quieter, and more efficiently than other generators. But they cost more.

[Get a quote](#)

---

### Solar vs. Inverter: Understanding Key Differences

Step 1: Conversion of DC Power - Normal inverters convert DC power from the power source, such as the grid or batteries. Step 2: Inversion ...



[Get a quote](#)



### How much power does an inverter use on standby - PowMr

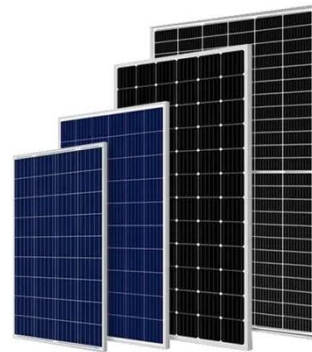
In general, the standby power consumption of most inverters is relatively low, typically less than 1% of their rated power output. For a 1000W inverter, the average idle ...

[Get a quote](#)

## Inverter vs. Non Inverter AC: Power Consumption and ...

This article compares inverter and non-inverter air conditioners based on their power consumption, cooling performance, operating costs, and ...

[Get a quote](#)



## How To Choose A Inverter For Home Use In 2023

An inverter is a great way to run your households and other home appliances as well as electrical devices for all the time even when the power ...

[Get a quote](#)

## Inverter Efficiency: Understanding How Much Power You're ...

Many people think that once they connect their solar panels and batteries to an inverter, they're automatically using 100% of the power being generated. But that's not always ...

[Get a quote](#)



## Inverter vs Non-Inverter Aircon Malaysia [Comparison]

Inverter vs non-inverter aircon power consumption The main concern of most



people is the difference in power consumption between inverter and non-inverter air conditioners.

[Get a quote](#)

## Why Does Power Inverter Output Power Not Reach Rated Power

What Is Rated Power on a Power Inverter? The rated power refers to the maximum continuous power the inverter can supply under ideal conditions, usually expressed in watts ...



[Get a quote](#)



## Inverter Generator Vs Normal: Key Differences Explained

Understanding the differences in power output and efficiency between inverter generators and normal generators is crucial. This knowledge can help you ...

[Get a quote](#)

## How much power does an Inverter use just sitting there idling?

Generally a 3 kW sinewave high freq

inverter is 30 to 50 watts of full idle power. A high frequency inverter has two primary stages. First stage is high frequency DC to DC ...

[Get a quote](#)



## **Inverter Refrigerator vs Normal Refrigerator: 10 Differences**

Unlike normal refrigerators that operate at a constant speed, inverter refrigerators adjust the compressor's speed based on the cooling requirements, resulting in reduced power ...

[Get a quote](#)

## **Solar Inverter Vs Normal Inverter**

Normal or power inverter efficiency depends on inverter load power capacity variation. Higher load power capacity increases inverter efficiency to its max whereas lower ...

[Get a quote](#)



## **Inverter Peak Power vs Rated Power: What it is and ...**





Understand the key differences between inverter peak power and rated power. Discover the importance of both, how they affect your appliances.

[Get a quote](#)

---

## Inverter Generator vs Generator: What's the Difference?

With any type of generator, the price can vary quite a bit depending on the power output and specific features of the unit. However, ...

[Get a quote](#)



## Inverter Generator Vs Normal: Key Differences Explained

Understanding the differences in power output and efficiency between inverter generators and normal generators is crucial. This knowledge can help you make an informed decision based ...

[Get a quote](#)

---

## Inverter AC vs Normal: Which Saves More Energy?

What is Inverter Technology? Well, it is the latest technology available



concerning the motors of the compressors. This technology mainly ...

[Get a quote](#)



**Deye Official Store**

**10 years**  
warranty



✓ LIQUID/AIR COOLING

✓ ON GRID/HYBRID

✓ PROTECTION IP54/IP55

✓ BATTERY /6000 CYCLES

## A Guide to Solar Inverters: How They Work & How to Choose Them

String inverters have a warranty that ranges by brand from 10-15 years. Hybrid Inverter Systems A hybrid solar power inverter system, also called a multi-mode inverter, is part of a solar array ...

[Get a quote](#)

## Inverter Microwave vs Normal Microwave: How to ...

FAQs What is the difference between an inverter microwave and a normal microwave? Inverter microwaves use variable power output for more ...

[Get a quote](#)

**FLEXIBLE SETTING OF  
MULTIPLE WORKING MODES**



## Solar Inverter vs Normal Inverter: What is the difference?



Although, considering lifespan, solar inverters last longer for 10 to 20 years compared to the normal inverters that last up to 10 years. However, ...

[Get a quote](#)

---

## How much power does an inverter use on standby - ...

In general, the standby power consumption of most inverters is relatively low, typically less than 1% of their rated power output. For a 1000W ...

[Get a quote](#)



---

## A Detailed Guide on Solar Inverter: Types, Price, Working, and More

Power cuts are a normal issue, and the best solution is an inverter. But solar inverters are innovative game-changers that help reduce power bills. Solar inverters convert ...

[Get a quote](#)

---

## Difference Between Inverter Vs Solar Inverter Vs ...

Difference Between Inverter Vs Solar Inverter Vs Lithium Inverter we will

discuss inverters, how they work, the differences between a Normal ...

[Get a quote](#)



## Inverter Peak Power vs Rated Power: What it is and Why It Matters

Understand the key differences between inverter peak power and rated power. Discover the importance of both, how they affect your appliances.

[Get a quote](#)

## What is an Inverter? Working Principle, Types, and ...

An inverter is a type of electronic device or circuit designed to transform direct current (DC) into alternating current (AC). It plays a crucial role in a variety of ...

[Get a quote](#)



## Solar Inverter vs Normal Inverter: What is the difference?

Although, considering lifespan, solar



inverters last longer for 10 to 20 years compared to the normal inverters that last up to 10 years. However, the initial cost and other ...

[Get a quote](#)

---

## Contact Us

For catalog requests, pricing, or partnerships, please visit:  
<https://zenius.co.za>