

SolarMax Energy Systems

Main equipment of EMS for communication base stations



Overview

How does EMS radio communication work?

It may also convert the signal to a telephone signal and send the communications through public or dedicated telephone lines. EMS radio communication takes place in the VHF low band, VHF high band, and UHF band. VHF low band is the radio frequencies from 32-50 megahertz (MHz).

What is a base station?

A base station is a radio operated from a fixed site such as a dispatch center, hospital, or some other location. It usually runs off community electrical power and transmits at much higher power than smaller, portable radios. Alternative power in the form of generators or a set of batteries are usually available.

What frequency does EMS radio communication take place in?

EMS radio communication takes place in the VHF low band, VHF high band, and UHF band. VHF low band is the radio frequencies from 32-50 megahertz (MHz). They are able to follow the shape of the earth allowing communication over long distances. These frequencies are more susceptible to interference from, weather, buildings, and electrical equipment.

How does EMS rebroadcast a radio signal?

Some rebroadcast by converting signals to radio and others do so by converting to microwaves. It may also convert the signal to a telephone signal and send the communications through public or dedicated telephone lines. EMS radio communication takes place in the VHF low band, VHF high band, and UHF band.

Why is communication important in EMS?

Communication in EMS is essential. Patients must be able to access the system, the system must be able to dispatch units, EMTs must have a means of communicating with medical direction and receiving facility, and EMTs must

be able to communicate vital information to other personnel.

How do you call EMS?

In many states, there are established training and performance standards for dispatch personnel. The most common method for accessing the EMS system is the telephone. In the late 70's and early 80's, callers became able to call 9-1-1 instead of worrying which number to call.

Main equipment of EMS for communication base stations



FIRE/EMS VEHICLE COMMUNICATION SOLUTIONS

FIRE/EMS VEHICLE COMMUNICATION SOLUTIONS Wireless and wired headset communication systems for enhanced safety, hearing protection and clear communication

[Get a quote](#)

Chapter 2: Preparatory Part 2 - Emergency Medical Responder

Emergency Medical Services Communications Effective communication is necessary for successful pre-hospital emergency care. From the initial 9-1-1 call to the transfer of patient ...



[Get a quote](#)



European Warehouse
 
 7-15 days Delivery
 ONE-STOP SOLUTION
 65kWh 30kW
 130kWh 30kW
 130kWh 60kW

Chapter 5 Communication Questions Flashcards , Quizlet

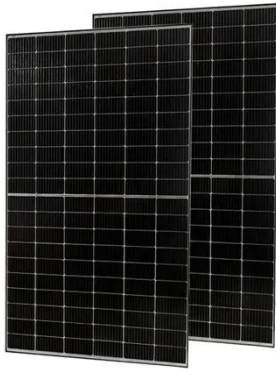
To ensure accuracy and synchronicity, most EMS systems use military time rather than standard A.M. and P.M. designations. Choose the military time that correctly represents 9:32 P.M. ...

[Get a quote](#)

Guide for the Selection of Communication Equipment for ...

The RF communication equipment considered in this guide includes portable radios, mobile radios, base/fixed station radios, repeaters, and base station/repeaters.

[Get a quote](#)



Types and Applications of Mobile Communication ...

Mobile communication base station is a form of radio station, which refers to a radio transceiver station that transmits information between mobile ...

[Get a quote](#)

Guide to Base Station Communications Equipment , Office of ...

The guide then describes basic equipment needed in a base station: a transceiver (transmitter and receiver), a control device, microphone and speaker, a transmission line, and an antenna.

[Get a quote](#)



IAFF: Voice Radio Communications Guide for the Fire ...

Some fire departments equip fire



stations with base station radios to provide enhanced coverage throughout their service area and to provide ...

[Get a quote](#)

Effective Communication in EMS Systems: A Comprehensive Guide

Understanding the language and fundamentals used in EMS communication systems is critical. Base Station: A fixed radio unit with a transmitter and receiver. Cellular Telephone: A portable ...



[Get a quote](#)



Ambulance Radios: Types And Uses , ShunAuto

The use of base stations in EMS communication ensures a reliable and consistent connection. They are often equipped with alternative power sources, such as generators or ...

[Get a quote](#)

Dispatch 101: The ins and outs of communication centers

Dispatch centers: The first of the first responders A back-to-basics review of communication center types and facility equipment, plus must-have ...

[Get a quote](#)



Communications-EMT -- Hopper Institute®

A base station is a radio operated from a fixed site such as a dispatch center, hospital, or some other location. It usually runs off community electrical power and transmits at much higher ...

[Get a quote](#)

Chapter 2: Preparatory Part 2 - Emergency Medical Responder

This section explores the key elements of communication in EMS, focusing on the technologies used, best practices for effective communication, and the importance of maintaining robust ...

[Get a quote](#)



EMS System Communications - georgiaemsacademy

In a typical analog cell-phone system in the United States, the cell-phone carrier receives about 800 frequencies to use



across the city. The carrier chops up the city into cells. ...

[Get a quote](#)

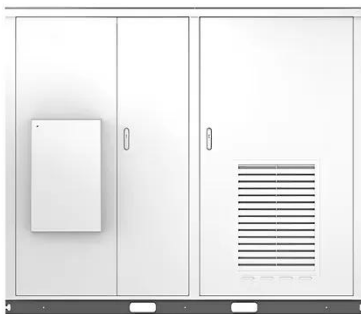
What is a Base Station in Telecommunications?

What is a Base Station? A base station is a critical component in a telecommunications network. A fixed transceiver that acts as the central ...



[Get a quote](#)

Solar



EMSCOM

Provide a base station communications back-up for dispatching, direct phone line patching and coordinating EMS information in cases where local base station control fails or is not available.

[Get a quote](#)

Ambulance Radios: Types And Uses , ShunAuto

The use of base stations in EMS communication ensures a reliable and consistent connection. They are often

equipped with alternative power ...

[Get a quote](#)

12V 10AH



Energy Storage for Communication Base

The one-stop energy storage system for communication base stations is specially designed for base station energy storage. Users can use the energy storage ...

[Get a quote](#)

Contact Us

For catalog requests, pricing, or partnerships, please visit:
<https://zenius.co.za>