

## SolarMax Energy Systems

# Mobile Base Station Battery Connection



## Overview

---

What makes a telecom battery pack compatible with a base station?

Compatibility and Installation Voltage Compatibility: 48V is the standard voltage for telecom base stations, so the battery pack's output voltage must align with base station equipment requirements. Modular Design: A modular structure simplifies installation, maintenance, and scalability.

Which battery is best for telecom base station backup power?

Among various battery technologies, Lithium Iron Phosphate (LiFePO<sub>4</sub>) batteries stand out as the ideal choice for telecom base station backup power due to their high safety, long lifespan, and excellent thermal stability.

How do you protect a telecom base station?

Backup power systems in telecom base stations often operate for extended periods, making thermal management critical. Key suggestions include: Cooling System: Install fans or heat sinks inside the battery pack to ensure efficient heat dissipation.

How do you connect a battery to a chassis?

For Positive directly to the Battery Term post with a fuse as close as possible to battery. For the Ground aka negative circuit conductor, locate the factory Battery Bonding Jumper to chassis. Cannot miss it, it is the cable on the Battery Negative Term Post. Typically bonded to Wheel Well, or Fire Wall. Remove factory bolt.

What if a Fuse goes from a mobile radio to a battery?

@mrog Dereck's answer is basically saying that a fuse on a negative lead going from the mobile radio to the battery is a band-aid (an ineffective solution to the problem) at best, and that the better solution is to connect the mobile radio's negative lead directly to the vehicle's chassis, with no fuse required in the negative lead.

Why is backup power important in a 5G base station?

With the rapid expansion of 5G networks and the continuous upgrade of global communication infrastructure, the reliability and stability of telecom base stations have become critical. As the core nodes of communication networks, the performance of a base station's backup power system directly impacts network continuity and service quality.

## Mobile Base Station Battery Connection



### What do you use for a external battery on a R12 base? When I

We have a Lemo cable spliced to an SAE connector. Then we can use any battery we want with a SAE connector on the posts with ring terminals. Secure and pretty weather ...

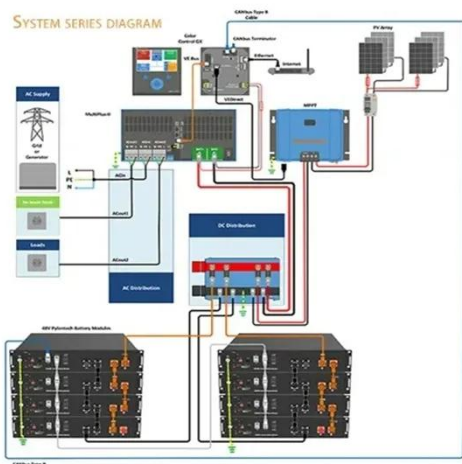
[Get a quote](#)

## Ham Radio Mobile Installation -- Going Mobile (Part 1)

There are many different feasible ham radio mobile equipment combinations and installation approaches that can result in a well performing mobile station in ...



[Get a quote](#)



### 12 Volt Lead-Acid Battery + Trickle Charger to Power ...

I had been using it to power a small 10 watt 2 meter mobile radio for an indoor base station. I have a few 12 volt starting and deep-cycle lead ...

[Get a quote](#)

## D-RTK 2

D-RTK 2 High Precision GNSS Mobile Station is a durable GNSS receiver that supports all major global satellite navigation systems. Ultra-portable with an IP67 ingress protection, it enables ...

[Get a quote](#)



## Battery Backup to base station rig? : r/amateurradio

At home, I currently run a mobile 2m/70cm radio and a Kenwood TS-430S 160-10m radio off of a power supply. However, I would kind of like to have a battery backup for my radios, and I ...

[Get a quote](#)

## Quick Setup Guide: How to Install Your US Mobile Home Phone Base

Join us for this step-by-step tutorial to help you set up your new US Mobile Home Phone Base. This video covers the entire process - from battery installation, power cord connection, and ...

[Get a quote](#)



## Telecom Base Station Backup Power Solution: Design Guide for ...



Discover the 48V 100Ah LiFePO4 battery pack for telecom base stations: safe, long-lasting, and eco-friendly. Optimize reliability with our design guide.

[Get a quote](#)

---

## Telecom Base Station Backup Power Solution: Design ...

Discover the 48V 100Ah LiFePO4 battery pack for telecom base stations: safe, long-lasting, and eco-friendly. Optimize reliability with our ...

[Get a quote](#)



## Basic components of a 5G base station

We mainly consider the demand transfer and sleep mechanism of the base station and establish a two-stage stochastic programming model to minimize ...

[Get a quote](#)

---

## Mobile dual band base station battery power options

The common terminal on the switch will be hooked to the battery. One of the other terminals will go to the radio and

the remaining terminal to the battery charger.

[Get a quote](#)



### **Should I ground my radio to the chassis or battery for a mobile ...**

Never connect Negative directly to battery and never fuse the Negative as doing so is extremely dangerous. Doing so puts your radio in Parallel with the Battery Bonding Strap to the chassis.

[Get a quote](#)

### **Mobile as base station--How do I power this thing? : r/gmrs**

The General Mobile Radio Service (GMRS) is a North American land-mobile FM UHF radio service designed for short-distance two-way communication. It requires a license in ...

[Get a quote](#)



### **Mobile base station site as a virtual power plant for grid stability**





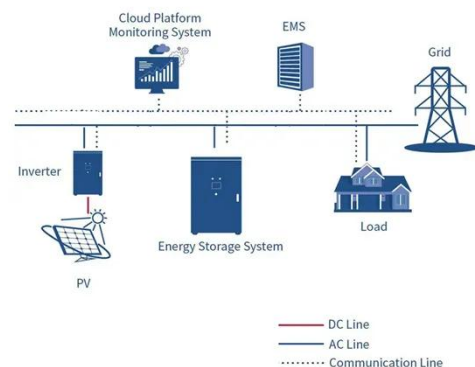
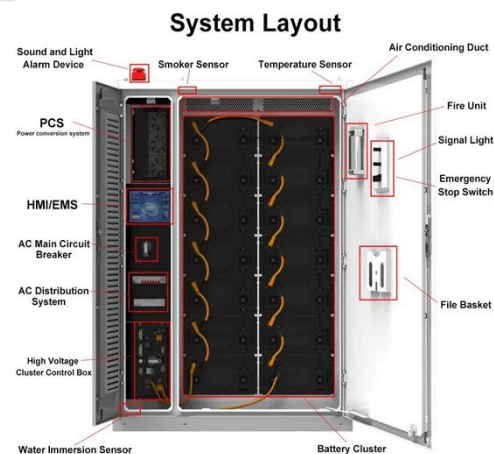
The system consists of a live mobile base station site with a mobile connection to the site, local controller, an existing battery, and a power system that, in combination, can function as part of ...

[Get a quote](#)

## Battery Backup to base station rig? : r/amateurradio

At home, I currently run a mobile 2m/70cm radio and a Kenwood TS-430S 160-10m radio off of a power supply. However, I would kind of like to have a battery backup for my ...

[Get a quote](#)



## ?Base Station , SimpliSafe Support Home

Base Station (Gen 3) Overview and Installation Guide The Base Station is the brains and primary siren of your system. It communicates with all of your ...

[Get a quote](#)

## Should I ground my radio to the chassis or battery for ...

@mrog Dereck's answer is basically saying that a fuse on a negative lead going from the mobile radio to the



battery is a band-aid (an ineffective solution to the ...

[Get a quote](#)



## Mobile Ham Radio as a Base Station Power Supply

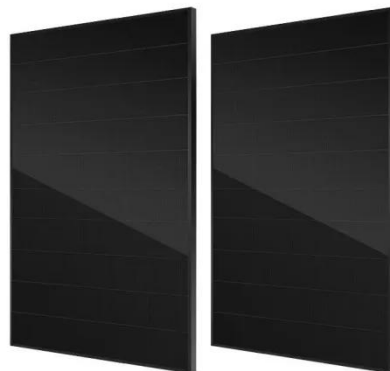
Power your mobile ham radio as a base station with Fleetwood Digital. Learn about proper 12-volt DC power supply needs and dedicated power supply options for reliable mobile ...

[Get a quote](#)

## 12 Volt Lead-Acid Battery + Trickle Charger to Power Base-Station

I had been using it to power a small 10 watt 2 meter mobile radio for an indoor base station. I have a few 12 volt starting and deep-cycle lead acid batteries lying around.

[Get a quote](#)



## Mobile as base station--How do I power this thing? : r/gmrs

The General Mobile Radio Service



(GMRS) is a North American land-mobile FM UHF radio service designed for short-distance two-way communication. It requires a license in United ...

[Get a quote](#)

---

## How to convert a mobile radio to a home base station? : r/gmrs

You can connect to the radio to a battery, then use a battery charger or solar panel (during the day of course) to charge it back up. This allows for use even when the power is out.



[Get a quote](#)

---

## Contact Us

---

For catalog requests, pricing, or partnerships, please visit:  
<https://zenius.co.za>