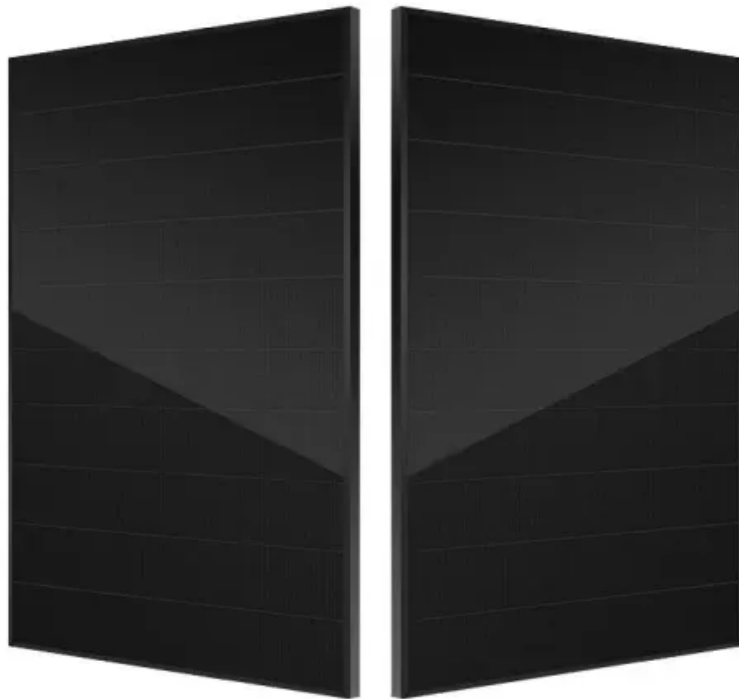


SolarMax Energy Systems

Normal voltage range of energy storage battery



Overview

The operating voltage range is the safe voltage window for a LiFePO4 battery pack, from 2.5V (fully discharged) to 3.65V (fully charged). Staying within this range (10V–14.6V for a 12.8V pack) maximizes lifespan. For instance, charging above 3.7V can reduce a pack's capacity over time. 3. What is the voltage of a battery?

For instance, alkaline batteries, commonly used in household devices, typically have a voltage of 1.5 volts, while car batteries have a voltage of 12 volts. The voltage of a battery is directly proportional to its state of charge. When a battery is fully charged, its voltage is at its highest level, and as it discharges, the voltage drops.

What is a battery voltage chart?

A battery voltage chart displays the voltage range for a specific battery type at different state of charge levels. By measuring the voltage of your battery and comparing it to the chart, you can determine the state of charge of your battery and whether it needs to be charged or replaced.

What is the voltage range for a solar battery?

Typical voltage ranges for solar batteries are between 12V and 48V. UPS batteries are used to provide backup power in case of a power outage. The voltage range for UPS batteries is typically between 12V and 48V. It is important to choose the right voltage for your UPS to ensure that it can provide enough power to keep your devices running.

What is a battery voltage percent chart?

A battery voltage percent chart can help you keep track of your battery's state of charge and voltage levels. The normal voltage range for a fully charged 12V battery is between 12.6 and 12.8 volts. However, the voltage level can vary depending on the type of battery, its age, and the temperature.

What is the voltage range of a 12V battery?

Each type of battery has a different voltage range and state of charge levels. For example, a 12V lead-acid battery has a voltage range of 12.6V to 10.5V, while a 12V lithium-ion battery has a voltage range of 12.6V to 9.0V. It is important to use the correct chart for your specific battery type to ensure accurate readings.

What is a safe voltage for a lithium ion battery?

Lithium-ion batteries function within a certain range at which their voltage operates optimally and safely. The highest range where the fully charged voltage of a lithium-ion battery is approximately 4.2V per cell. The lowest range which is the minimum safe voltage for lithium-ion batteries is approximately 3.0V per cell.

Normal voltage range of energy storage battery

A Guide to Understanding Battery Specifications



It provides a basic background, defines the variables used to characterize battery operating conditions, and describes the manufacturer specifications used to characterize battery nominal ...

[Get a quote](#)

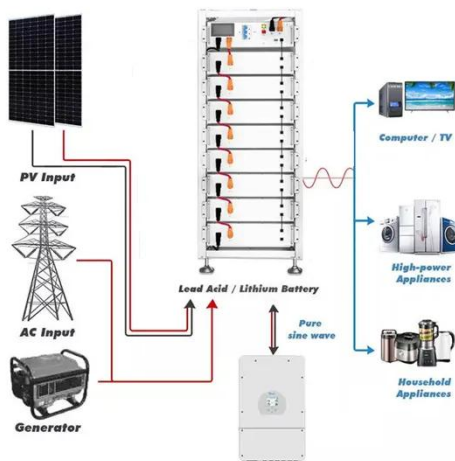
Understanding the Normal Voltage Range of Energy Storage ...

This article explores the normal voltage ranges of common battery types, their applications, and factors influencing performance. Learn how voltage impacts efficiency and longevity across ...



51.2V 150AH, 7.68KWH

[Get a quote](#)



Lithium Ion Battery Voltage Explained: Everything You Need to ...

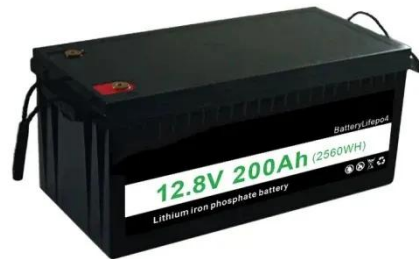
The lithium ion battery voltage range is a distinguishing property of the battery performance. Sticking to the perfect voltage limits means that the energy delivery is efficient, ...

[Get a quote](#)

Technical Parameters and Management of Lithium ...

Learn about the key technical parameters of lithium batteries, including capacity, voltage, discharge rate, and safety, to optimize ...

[Get a quote](#)



LiFePO4 Battery Pack: 2025 Technical Parameters Guide

The operating voltage range is the safe voltage window for a LiFePO4 battery pack, from 2.5V (fully discharged) to 3.65V (fully charged). Staying within this range (10V-14.6V for a 12.8V ...

[Get a quote](#)

Technical Parameters and Management of Lithium Batteries in Energy

Learn about the key technical parameters of lithium batteries, including capacity, voltage, discharge rate, and safety, to optimize performance and enhance the reliability of ...

[Get a quote](#)



Grid-Scale Battery Storage: Frequently Asked Questions



Storage duration is the amount of time storage can discharge at its power capacity before depleting its energy capacity. For example, a battery with 1 MW of power capacity and 4 MWh ...

[Get a quote](#)

Lithium Ion Battery Voltage Explained: Everything You ...

The lithium ion battery voltage range is a distinguishing property of the battery performance. Sticking to the perfect voltage limits means that the ...

[Get a quote](#)



Normal voltage range of energy storage battery

Understanding Normal Battery Voltage: A Comprehensive Guide For example, a lithium-ion battery typically has a voltage range of 3.7 to 4.2 volts, while a lead-acid battery has a voltage ...

[Get a quote](#)



How many volts is normal for energy storage batteries?

Each battery type comes with advantages and limitations, making it critical to select the appropriate voltage

for specific energy storage applications,
with a close examination ...

[Get a quote](#)



What is the normal voltage of the energy storage battery?

Understanding the various types of energy storage batteries is crucial for determining their normal voltage. Each type operates on different principles, making their ...

[Get a quote](#)

Normal voltage range of energy storage battery

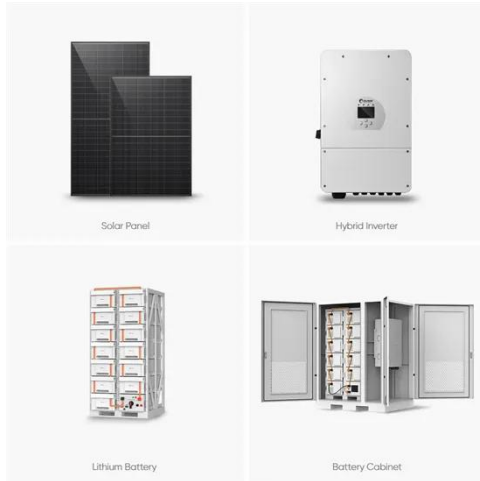
Here's a simplified SoC chart for a typical lithium-ion battery: Understanding this relationship is crucial for several reasons: Performance: Devices are designed to operate within a specific ...

[Get a quote](#)



Battery Voltage Chart: The Optimal Voltage Range for ...

A battery voltage chart displays the voltage range for a specific battery type at different state of charge levels. By



measuring the voltage of ...

[Get a quote](#)

Battery Voltage Chart: The Optimal Voltage Range for Your ...

A battery voltage chart displays the voltage range for a specific battery type at different state of charge levels. By measuring the voltage of your battery and comparing it to ...

[Get a quote](#)



Contact Us

For catalog requests, pricing, or partnerships, please visit:
<https://zenius.co.za>