

## SolarMax Energy Systems

# Outdoor power supply ambient temperature



## Overview

---

Ambient temperature impacts the behavior, performance, and reliability of power supplies, making the environment a critical factor in their selection. By understanding industry conventions and popular cooling methods, factors that underscore a power supply's operational temperature range, thermal derating.

The implications of operating power supplies at extreme temperatures are certainly key concerns in the design phase. But first, let's define some basic.

Heat is a power converter's worst enemy. At high operational temperatures, thermal runaway can cause semiconductors to overheat and burn out. Component.

Given that the heat transferred from a PSU to the ambient environment is directly proportional to the difference in temperature between the two media by.

Convection is the transfer of heat via the movement of fluids, including air, across the surface of an object with a temperature different than that of the fluid.

## Outdoor power supply ambient temperature

---



### Typical operating conditions unit 40 Flashcards , Quizlet

Study with Quizlet and memorize flashcards containing terms like The standard design conditions for air-conditioning systems established by the air-conditioning, heating and refrigeration ...

[Get a quote](#)

---

### UPS battery backup for extreme temps? : r/Starlink

Any recommendations for a UPS that can withstand extreme temperatures, say -10 to 100? Dishy is installed on my detached garage, which is unheated & uncooled. I don't need high runtime, ...

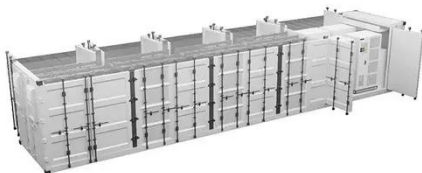


[Get a quote](#)

---

### Outdoor power supply

Outdoor power supply - temperature ratings I'm working on installing my PA-II outdoors on a balcony. Ambient temperatures are typically around 70? but can peak in the 80 ...



[Get a quote](#)

---

## What temperature do power supplies operate at?

I have a strange urge to monitor the temperature on the power supply. 1 reason is that if the fan fails, and the fan controller fails to alert me, it will alert me via the temperature - ...

[Get a quote](#)



## What Classifies an Extreme Environment for Power Supplies?

The standard operating temperature range for a power supply is  $-40^{\circ}\text{C}$  to  $+85^{\circ}\text{C}$  range. High heat above  $+85^{\circ}\text{C}$  and freezing environments below  $-40^{\circ}\text{C}$  can cause a major ...

[Get a quote](#)

## Outdoor Harsh Environment and High-Power Power ...

The HEP-2300 is completely perfect for systems that operate outdoors and require a power of more than 2000 watts. The series includes ...

[Get a quote](#)



## How Outside Temperature Impacts Air Conditioner Efficiency and

Smart thermostats and home



automation platforms use weather data to anticipate outdoor temperature swings and optimize when and how your air conditioning system ...

[Get a quote](#)

---

## The Benefits of Wide Operating Temperature Power Supplies

When you're selecting a power supply for your system, you'll need to consider its ambient operating temperature range. Running your power supply within its specified operating ...



[Get a quote](#)



## Working temperature of LEDs and LED driver

The higher the power of the LED chips /the worse the power supply performance/the unreasonable heat dissipation design of the lamp/the higher ...

[Get a quote](#)

---

## Design Considerations for Maximum Allowable Temperature

Generally, safety agency CB test reports

of the mentioned standards list critical components with maximum rated temperature values which are to consider for enclosure construction. Derating ...

[Get a quote](#)



## Outdoor Harsh Environment and High-Power Power Supply

...

The HEP-2300 is completely perfect for systems that operate outdoors and require a power of more than 2000 watts. The series includes four different output voltages, ...

[Get a quote](#)

## Design Considerations for Maximum Allowable Temperature

Derating curves in most datasheets show maximum power ratings versus ambient temperature of the power supply. These measurements are made in climate chambers on power supplies in ...

[Get a quote](#)



## TA04-High Temperature Challenges and Solutions for

## Power ...



When the ambient temperature exceeds this range--such as during scorching summers or freezing winters--the power supply may fail to operate normally. To address such extreme ...

[Get a quote](#)

---

## Impact of Temperature on Power Supply Reliability

Explore the effects of heat and cold on power supplies and find effective design solutions to mitigate temperature-related issues. Read more!

[Get a quote](#)



---

## Microsoft Word

The temperature of the capacitor is the sum of the system's ambient operating conditions and the temperature rise of the power supply which raises the temperature near the capacitor's ...

[Get a quote](#)

---

## Molybdenum and Cobalt Silicide Field Emitter Arrays

To determine the contribution of each variable to power reduction, the effect of each optimized variable is analyzed. The



results show that the optimizations of the condenser water mass flow ...

[Get a quote](#)



## What temperature environment is the outdoor power supply ...

Outdoor Power Supply: Guide for Storing Large Capacity, High Power Lithium Batteries, Optimal Operating Temperature -10°C to 40°C, Avoid Direct Sunlight and Humid ...

[Get a quote](#)

## TA04-High Temperature Challenges and Solutions for ...

When the ambient temperature exceeds this range--such as during scorching summers or freezing winters--the power supply may fail to operate normally. ...

[Get a quote](#)



## How Thermal Environment Impacts Power Supply Success

The typical internal AC/DC power supply can be expected to offer its full





nameplate-rated power output in ambient temperatures between 0°C and 50°C (32°F and 122°F). It is ...

[Get a quote](#)

## 2024-06-21\_Template\_Aussentransmitter-1-EN dd

The integrated alarm functions, including sensor break, sensor short-circuit and measuring range monitoring, ensure correct temperature measurement and transmission and provide ...



[Get a quote](#)



## SEN-500-2 & SEN-500-3 Outdoor Air Temp Sensors

The SEN-500-2 and SEN-500-3 Outdoor Air Temperature Sensors offer economical solutions to outdoor air temperature measurement in applications with the T500 Series of programmable ...

[Get a quote](#)

## The Benefits of Wide Operating Temperature Power ...

When you're selecting a power supply for your system, you'll need to consider

its ambient operating temperature range. Running your power supply within its ...

[Get a quote](#)



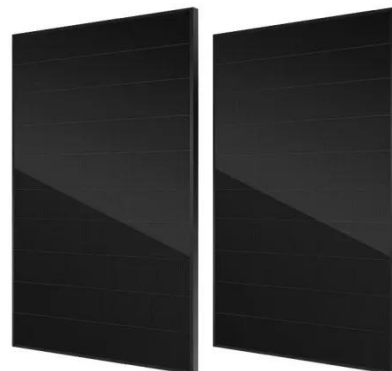
## Impact of Temperature on Power Supply Reliability

Explore the effects of heat and cold on power supplies and find effective design solutions to mitigate temperature-related issues. Read more!

[Get a quote](#)

## Uninterruptible Power Supply For All Seasons Falcon SSG Models:

Remote locations, often in rural areas in adverse weather conditions, require a UPS capable of operating in a wide temperature range. Falcon Electric's SSG Industrial/Outdoor UPSs are ...



[Get a quote](#)

## Contact Us

For catalog requests, pricing, or partnerships, please visit:

<https://zenius.co.za>