

## SolarMax Energy Systems

# Photovoltaic panel sloping roof design



## Overview

---

Not everybody has a large, unshaded, south-facing roof. So what happens if your roof design is less than perfect for solar panels?

In these scenarios, there are two ways to increase your solar output: Use panels with a higher power rating – Solar panels are rated from 250 to 450 based on how many Watts of.

There are several roof characteristics that effect how much your solar panels will produce. Here is the top six: .

Although it's tempting to want the best roof design for solar panels, solar panels are extremely versatile and can provide energy cost savings and clean energy in many applications.

For most residential properties, a roof with a slope between 30° and 40° is considered optimal for solar panel installation. This angle allows solar panels to lie flat against the roof without requiring additional adjustments, making it easier to install standard racking systems.

## Photovoltaic panel sloping roof design

---



### Installation of PV panels on the ground, roof, balcony or facade

The choice of location is a critical factor during the installation of photovoltaic panels. Roofs--flat or sloped--are the most common installation sites, offering excellent sun exposure and energy ...

[Get a quote](#)

### How to Install Solar Panels on a Sloped Roof: Step-by-Step ...

Learn how to effectively install solar panels on a sloped roof with our detailed guide. Discover the benefits, step-by-step installation process, safety tips, and maintenance advice to maximize ...



[Get a quote](#)



### Installing Solar Panels On Low Slope Roofing

Check out the chart below for a visual of a low-slope, 3:12-pitch roof profile. When planning the installation of a low-slope rooftop solar array, it's crucial to start with a thorough structural ...

[Get a quote](#)

## How to Choose a Photovoltaic Structure for a Sloped ...

Choosing the right support structure for PV panels on a sloped roof is a crucial step in the installation process. The structure should be tailored to the roof's ...

[Get a quote](#)



## Slope, pitch, gradient of a roof or solar panels (calculator and ...

Calculator and relationship between slope, pitch, gradient, rise, run length and tilted length of a roof or solar photovoltaic panels Free online calculator of the slope according ...

[Get a quote](#)

## How to design solar energy on a sloping roof , NenPower

To effectively design solar energy systems on sloping roofs, one must consider various critical factors and methodologies. 1. Understand the ...

[Get a quote](#)



## PV Pointers: Tips for mounting PV on a low-slope roof

The roof should already be in good condition before installing PV and should



at minimum last as long as the PV system being installed. The removal and redesign of a PV ...

[Get a quote](#)

## Solar Panel Mounting Structures , Just Solar

Tile roof mounts Roofs covered with clay, concrete, or slate tiles need tile roof mounts for solar panel installation. Solar panel mounting ...

[Get a quote](#)



- ✓ 100KW/174KWh
- ✓ Parallel up-to 3sets
- ✓ IP Grade 54
- ✓ EMS AND BMS

## How to design solar energy on a sloping roof , NenPower

To effectively design solar energy systems on sloping roofs, one must consider various critical factors and methodologies. 1. Understand the roof's orientation,...

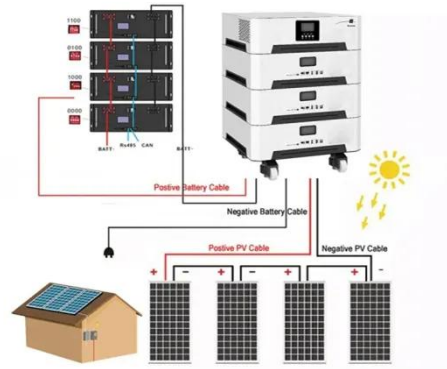
[Get a quote](#)

## How to place solar energy on a sloping roof , NenPower

In summary, the installation of solar energy systems on sloping roofs necessitates meticulous planning and

execution. Critical aspects to ...

[Get a quote](#)



## The Complete Guide To Rooftop Solar Mounting [2025]

What is Rooftop Solar Mounting?  
Mounting solar panels on a roof surface to create a solar power system is known as rooftop solar mounting. Solar panels can't be put on a roof ...

[Get a quote](#)

## Installing Solar Panels On Low Slope Roofing

Check out the chart below for a visual of a low-slope, 3:12-pitch roof profile. When planning the installation of a low-slope rooftop solar array, it's crucial to start ...

[Get a quote](#)



## Solar Type Roof Design: A Comprehensive Guide for Sustainable ...

Understanding Solar Type Roof Design  
Solar type roof design refers to the

integration of solar panels into the architecture of a building. This design not only maximizes ...

[Get a quote](#)



## Solar Panel Wind Load Calculation ASCE-7-16 , SkyCiv

A fully worked example of Ground-mounted Solar Panel Wind Load and Snow Pressure Calculation using ASCE 7-16 With the recent trends in the ...

[Get a quote](#)



☒ LIQUID/AIR COOLING

☒ PROTECTION IP54/IP55

☒ PCS EMS

☒ BATTERY /6000 CYCLES

## Is it possible to install solar on a sloped roof without ...

What if you could install traditional solar panels on a sloped roof with no penetrations? Not low-watt, adhesive modules; not flexible thin-film; ...

[Get a quote](#)

## Roof Pitch for Solar Panels Calculator

For most residential properties, a roof with a slope between 30° and 40° is considered optimal for solar panel



installation. This angle allows solar panels to lie flat against the roof without ...

[Get a quote](#)



## 7 Types of Solar structures for your roof

This type of mounting is used when a solar panel is installed on a tilted roof. The tilt at which the solar panels will be placed will be similar to the tilt angle of the ...

[Get a quote](#)

## PV Pointers: Tips for mounting PV on a low-slope roof

The roof should already be in good condition before installing PV and should at minimum last as long as the PV system being installed. The ...

[Get a quote](#)



## Solar Photovoltaic: SPECIFICATION, CHECKLIST AND GUIDE

They are designed for builders constructing single family homes with





pitched roofs, which offer adequate access to the attic after construction. It is assumed that aluminum framed ...

[Get a quote](#)

---

## 7 Roof Designs That Maximize Solar Panel Efficiency ...

Discover 7 roof designs that can boost your solar panel efficiency by up to 30%. Learn how orientation, pitch, and structure maximize energy ...

[Get a quote](#)



## What Is the Best Roof Design for Solar Panels and What If Mine's ...

This article explores how your roof can effect solar production and what to do if you don't have the best roof design for solar panels.

[Get a quote](#)

---

## 7 Roof Designs That Maximize Solar Panel Efficiency Most ...

Discover 7 roof designs that can boost your solar panel efficiency by up to 30%. Learn how orientation, pitch, and

structure maximize energy production and ROI for your clean ...

[Get a quote](#)



## Roof Pitch for Solar Panels Calculator

For most residential properties, a roof with a slope between 30° and 40° is considered optimal for solar panel installation. This angle allows solar panels ...

[Get a quote](#)

## How to Choose a Photovoltaic Structure for a Sloped Roof?

Choosing the right support structure for PV panels on a sloped roof is a crucial step in the installation process. The structure should be tailored to the roof's characteristics, made from ...

[Get a quote](#)



## How to place solar energy on a sloping roof , NenPower

In summary, the installation of solar energy systems on sloping roofs necessitates meticulous planning and



execution. Critical aspects to consider include the roof's angle, ...

[Get a quote](#)

---

## Contact Us

For catalog requests, pricing, or partnerships, please visit:  
<https://zenius.co.za>