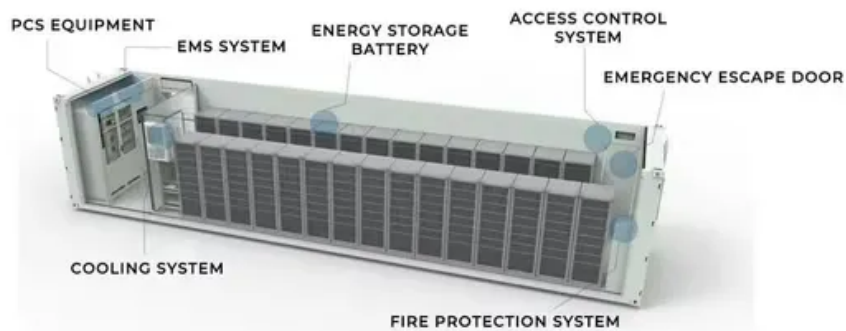


SolarMax Energy Systems

Power per square meter of each photovoltaic panel



Overview

A solar power per square meter calculator takes details regarding these factors and then gives the accurate output generated by the solar panel per square meter.

Wattage is the output of solar panels that is calculated by multiplying the volts by amps. Here, the amount of the force of the electricity is represented by volts. The aggregate amount of energy used is expressed in amps (amperes). Output ratings on most solar.

To consider the kilowatt required by the solar system, you need to use the average monthly consumption. Suppose you use 1400 kilowatt-hours per month, and the average sunlight is 6 hours. Now using the calculation, $1400 / 6 * 30 = 7.7$ kilowatt This is the energy for.

Here, a kilowatt-hour is the total amount of energy used by a household during a year. The calculator used to determine the solar panels kWh needs.

How much energy does a solar panel produce per square meter?

Given Egypt's high solar irradiance levels, which can reach up to 2200 kWh/m² annually, the potential power output per square meter of a solar panel can be quite significant. For a solar panel with an efficiency of 18%, this translates to an annual energy production of about 396 kWh/m².

What is solar panel watts per square meter (W/M)?

Solar panel watts per square meter (W/m) measures the power output of a solar panel based on its size. Compare solar panels to see which generates most electricity per square meter. A higher W/m value means a solar panel produces more power from a given area. This can help you determine how many solar panels you need for your energy needs.

What is a solar power per square meter calculator?

It also includes wiring, inverter, charge controller, and battery bank (if used). A solar power per square meter calculator takes details regarding these factors and then gives the accurate output generated by the solar panel per

square meter. After this, it's time to learn about solar panel output calculators.

How do you calculate solar power output per square meter?

To calculate the power output of a solar panel per square meter, you can use the following formula: $\text{Power Output (W/m}^2\text{)} = \text{Efficiency} \times \text{Solar Irradiance (W/m}^2\text{)}$
Efficiency: This is the panel's efficiency rating, typically provided by the manufacturer. Solar Irradiance: The power per unit area received from the Sun, usually measured in W/m^2 .

What is power per square meter (PPSM)?

Power Per Square Meter (PPSM) measures the amount of power distributed over a specific area. It is widely used in: Solar panel efficiency: Assessing how much electricity solar panels can generate per unit area. Lighting installations: Determining illumination levels and energy consumption.

How to improve the efficiency of a photovoltaic system?

Regular maintenance – The efficiency of the photovoltaic system increases when both the panel cleaning and debris inspection processes are properly executed. 4. Invest in high-efficiency panels – The PV modules at Rayzon Solar deliver exceptional efficiency which produces optimum energy generation.

Power per square meter of each photovoltaic panel



How Much Energy Can Solar Panels Generate?

Standard residential solar panels yield power between 250 and 400 watts per hour when operating in optimal environmental conditions. Solar panels ...

[Get a quote](#)

Solar Panel Power Per Square Meter: How to ...

This article will guide you through the essentials of calculating solar panel power per square meter, including the factors that influence efficiency ...

[Get a quote](#)

- LiFePO₄ Battery, safety
- Wide temperature: -20~55°C
- Modular design, easy to expand
- The heating function is optional
- Intelligent BMS
- Cycle Life: > 6000
- Warranty: 10 years



How Much Energy Can Solar Panels Generate? Power Output ...

Standard residential solar panels yield power between 250 and 400 watts per hour when operating in optimal environmental conditions. Solar panels produce 1.2 to 1.6 kilowatt-hours ...

[Get a quote](#)

How Much Electricity Does a Solar Panel Generate Per Square Meter?

Let's clear up the elephant in the room first - photovoltaic panels don't generate "square meters of electricity." That's like asking how many miles your breakfast burrito weighs!

[Get a quote](#)



How much does a solar panel actually produce?

Looking at the 1 MW system, the best output from panel 1 @ 31,347 MWh and the worst is panel 10 @ 29,563 MWh. This is a difference of 1,904 MWh or ...

[Get a quote](#)

Power Per Square Meter Calculator

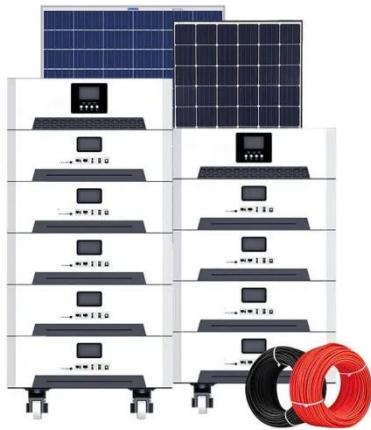
Understanding how to calculate Power Per Square Meter (PPSM) is essential for evaluating energy efficiency, optimizing resource allocation, and comparing different energy ...

[Get a quote](#)



Solar Panel Output per Square Meter: Efficiency ...

Solar panels have become a cornerstone of renewable energy, but many wonder: How much power can a single square



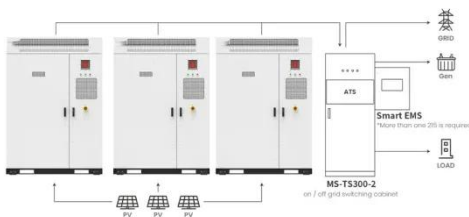
meter of solar panels actually produce?
...

[Get a quote](#)

How to Understand Solar Panel Watts Per Square Meter

Bottom Line In conclusion, understanding solar panel watts per square meter is vital for harnessing the full potential of solar energy. By ...

[Get a quote](#)



Application scenarios of energy storage battery products

How much Space do I need for Solar Panels? UK Guide 2025

Find out how much electricity you can generate per square foot or meter of roof space with solar panels in the UK. Click to know more.

[Get a quote](#)

How to calculate the power of a solar panel?

As you can see, monocrystalline solar panels generally have the best conversion efficiency, followed by

polycrystalline panels. Amorphous and thin-film panels have lower ...

[Get a quote](#)



US Solar Insolation Maps

Since the typical modern solar panel is about 19% - 21% efficient, you will get about 1200 watts per square meter of panel. So, if the map says that you live ...

[Get a quote](#)

How much electricity do solar panels produce?

How much electricity do solar panels produce? Solar panels generate electricity during the day. They generate more electricity when the sun shines directly on the solar panels. Figure 1 ...

[Get a quote](#)



How many watts of solar photovoltaic power generation per square meter

The average solar panel generates between 150 to 200 watts per square



meter, 2. This output depends on factors like location, orientation, and panel efficiency, 3. Enhanced ...

[Get a quote](#)

How to Calculate Solar Power per Square Meter

Solar power per square meter refers to the amount of solar energy that can be harnessed by a solar panel over a specific area, typically expressed in watts per square meter ...



[Get a quote](#)



[FREE] Solar (photovoltaic) cells convert sunlight directly into

To provide 1 kilowatt of power using solar panels that output 41 watts per square meter, you would need approximately 24.39 square meters of solar panels. This calculation is ...

[Get a quote](#)

Solar Power per Square Meter Calculator

A solar power per square meter

calculator takes details regarding these factors and then gives the accurate output generated by the solar panel per square meter.

[Get a quote](#)



Solar Panel Efficiency: Watts Per Square Meter Explained

First off, solar panel efficiency is the measure of a panel's ability to convert sunlight into electricity. The higher the efficiency, the more power you can generate in a given area. Currently, the

...

[Get a quote](#)

Solar Panel Output per Square Meter: Efficiency Factors & Future ...

Solar panels have become a cornerstone of renewable energy, but many wonder: How much power can a single square meter of solar panels actually produce? Let's break down the ...

[Get a quote](#)

Lithium Solar Generator: \$150



How Much Electricity Does a Solar Panel Generate Per Square ...



Let's clear up the elephant in the room first - photovoltaic panels don't generate "square meters of electricity." That's like asking how many miles your breakfast burrito weighs!

[Get a quote](#)

Solar Panel kWh Calculator: kWh Production Per Day, Month, Year

Based on this solar panel output equation, we will explain how you can calculate how many kWh per day your solar panel will generate. We will also calculate how many kWh per year do solar ...



[Get a quote](#)



How to Calculate Solar Power per Square Meter

Solar power per square meter refers to the amount of solar energy that can be harnessed by a solar panel over a specific area, typically ...

[Get a quote](#)

How many watts of solar photovoltaic power ...

The average solar panel generates

between 150 to 200 watts per square meter, 2. This output depends on factors like location, orientation, and ...

[Get a quote](#)



Solar Panel Power Per Square Meter: How to Calculate Efficiency

This article will guide you through the essentials of calculating solar panel power per square meter, including the factors that influence efficiency and how to make the most of ...

[Get a quote](#)

Contact Us

For catalog requests, pricing, or partnerships, please visit:
<https://zenius.co.za>