

SolarMax Energy Systems

What battery should I use with an inverter



Overview

Which battery is best for an inverter?

Gel Batteries: Gel batteries are a popular choice for inverter systems due to their durability and long lifespan. They are maintenance-free and offer excellent performance, making them ideal for long-term use as a backup power source. **AGM Batteries:** AGM (Absorbent Glass Mat) batteries are another reliable option for inverters.

Do inverters need batteries?

For most residential and small commercial setups, the traditional battery and power inverter combo is the preferred choice to ensure continuous power supply during blackouts. So, while some inverter types do not require batteries, if your priority is uninterrupted backup power, investing in a quality battery in inverter system is essential.

Are all batteries compatible with all inverters?

However, not all batteries are compatible with all inverters. To ensure a seamless and efficient operation, it's important to choose a battery that is well-suited for your specific power inverter. Before selecting a battery, it's essential to have a good understanding of your power inverter.

What are the different types of batteries for home power inverters?

Batteries are the backbone of any residential energy storage system, providing backup power when needed. The most common battery types for home power inverters are lead-acid and lithium-ion. Understanding the benefits and limitations of each will help you make an informed decision based on your power needs. **Lead-Acid Batteries.**

Are Inverter Batteries reliable?

In regions prone to frequent power cuts or unreliable electricity supply, inverter batteries are a dependable backup solution, ensuring consistent

productivity and comfort. Part 2. Types of inverter batteries Lead-acid batteries are the most commonly used inverter batteries.

What type of current does an inverter battery provide?

Inverters offer small amounts of power over a long time and only inverter batteries provide AC current which is needed to power your appliances when you are off-grid. Lead-acid batteries are also used in cars, but if you want to power your microwave, fridge, and other appliances you need a lead-acid battery specifically for use with inverters.

What battery should I use with an inverter



The Ultimate Guide to Choose Batteries for Inverter

Choosing between LiFePO4 and Lead Acid batteries for solar systems requires considering efficiency, lifespan, and environmental impact. ...

[Get a quote](#)

Mastering Inverter Batteries: Types, Selection, and Care

Inverter batteries are essential for keeping things running when the power goes out. They store energy during electricity failures, helping homes and appliances stay ...

[Get a quote](#)



Calculate Battery Size For Any Size Inverter (Using Our Calculator)

Discover how to choose, maintain, and maximize your battery in inverter for reliable backup power. Expert tips on inverter batteries, lifespan, and safety included!

[Get a quote](#)

Should an RV Inverter Be Left On? Does it Hurt the ...

Should an RV Inverter be left on? While it's true that turning your inverter off can extend your battery's lifespan, there are several scenarios such as using a ...

[Get a quote](#)



The Ultimate Guide to Choose Batteries for Inverter

Choosing between LiFePO4 and Lead Acid batteries for solar systems requires considering efficiency, lifespan, and environmental impact. Lithium-ion batteries offer versatility ...

[Get a quote](#)

Batteries For Inverters (Complete Guide)

When it comes to choosing the right battery for your solar inverter, you will need to carefully consider what battery type you need, so let's take a look at what type of inverter batteries are ...

[Get a quote](#)



Which Battery Is Best for an Inverter? - leaptrend

Choosing the right battery for your battery inverter is critical for ensuring reliable backup power, whether for your



home, business, or off-grid ...

[Get a quote](#)

What Type of Battery Should I Use for My Inverter?

What type of battery works best for inverters? Deep-cycle batteries work best for your sine wave inverters. Here's why: They can get discharged and recharged multiple times ...



[Get a quote](#)



Should I get an extra battery for the inverter?

I use it to power a 700 watt microwave or 750 watt teapot. Cheap mode: Other than the inverter on the car battery, you can go to the auto parts store or boat ...

[Get a quote](#)

An RV Inverter: What Is It, What Does It Do & How To ...

But the battery bank in your RV provides 12V DC power. So, when the source of your RV's power is a battery bank (as it

is when you're ...

[Get a quote](#)



How To Select And Use Power Inverter For Home ...

This article is with useful tips about how to select and use power inverter for home backup, voice from Chinese power inverter manufacturer VOKEK

[Get a quote](#)

What Type of Battery Should I Use for My Inverter?

What type of battery works best for inverters? Deep-cycle batteries work best for your sine wave inverters. Here's why: They can get discharged ...

[Get a quote](#)



Mastering Inverter Batteries: Types, Selection, and Care

Inverter batteries are essential for keeping things running when the power goes out. They store energy during

electricity failures, helping homes ...

[Get a quote](#)



How Inverters Work with Batteries: A Beginner's ...

What is an Inverter and How Does it Work with a Battery? An inverter is an electronic device that converts direct current (DC) from a battery ...

[Get a quote](#)



Ultimate Guide to Battery in Inverter: Choose & Maintain Right

Discover how to choose, maintain, and maximize your battery in inverter for reliable backup power. Expert tips on inverter batteries, lifespan, and safety included!

[Get a quote](#)



Do I Need A Fuse Between Battery And Inverter

So, the answer to do I need a fuse between battery and inverter is yes, you

sure do. First of all, the inverter will work only in inverter mode ...

[Get a quote](#)



Best Battery Options to Use with an Inverter

The type of battery you should use with a power inverter depends on factors such as your power requirements, budget, and preferences. Deep cycle batteries are a common ...

[Get a quote](#)

Choosing the Right Power Inverter for your Car or Truck

Generally, you should not use an inverter larger than 400 watts with a car or truck starter battery. So, if your only power source is your car's starter battery, you ...

[Get a quote](#)



Should I Leave My Inverter On All the Time?

But is it safe to leave an inverter on all the time? Or should you turn it off every once in a while? If you turn the inverter

off, all the settings on your appliances will be lost. However, portable RV ...

[Get a quote](#)

HEAT DISSIPATION

Cold aisle containment,
making optimal refrigeration effect;



Battery Choices for Home Power Inverters: What Professionals ...

With so many battery options available, professionals emphasize selecting the type that best suits your specific inverter--whether it's an off-grid inverter, hybrid inverter, or a ...

[Get a quote](#)



What Battery Is Best for Inverters? A Comprehensive Guide

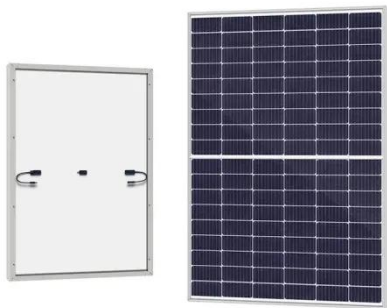
Choosing the right battery for an inverter is crucial for ensuring efficient power supply and longevity. The best batteries for inverters typically include deep cycle lead-acid ...

[Get a quote](#)

Battery Choices for Home Power Inverters: What ...

With so many battery options available, professionals emphasize selecting the type that best suits your specific inverter--whether it's an off-grid ...

[Get a quote](#)



Recommended Inverter Cable, Breaker & Fuse Sizing

Determine what size inverter-to-battery cables and DC breaker (or fuse) you should use with an off-grid inverter to install and operate it safely. Use this table to decide what size and to use ...

[Get a quote](#)

Batteries For Inverters (Complete Guide)

When it comes to choosing the right battery for your solar inverter, you will need to carefully consider what battery type you need, so let's take a look at what ...

[Get a quote](#)



Which Battery Is Best for an Inverter? - leaptrend

Choosing the right battery for your battery inverter is critical for ensuring reliable backup power, whether for your



home, business, or off-grid setup. The ideal battery must ...

[Get a quote](#)

Calculate Battery Size For Any Size Inverter (Using Our Calculator)

You would need around 24v 150Ah Lithium or 24v 300Ah Lead-acid Battery to run a 3000-watt inverter for 1 hour at its full capacity. Here's a battery size chart for any size inverter ...



[Get a quote](#)



How to Calculate the Right Battery Size for Your ...

Calculating the correct battery size ensures that your inverter system can meet your power needs without leaving you in the dark during outages. An ...

[Get a quote](#)

Understanding Battery Capacity and Inverter Compatibility

To estimate how long a battery can run

an inverter, we need to consider the power draw and the battery's capacity. Using a 100 Ah battery with a 1000W inverter, we perform the ...

[Get a quote](#)



Contact Us

For catalog requests, pricing, or partnerships, please visit:
<https://zenius.co.za>