

SolarMax Energy Systems

What kind of battery does a communication base station usually have



Overview

Which battery is best for telecom base station backup power?

Among various battery technologies, Lithium Iron Phosphate (LiFePO₄) batteries stand out as the ideal choice for telecom base station backup power due to their high safety, long lifespan, and excellent thermal stability.

What makes a telecom battery pack compatible with a base station?

Compatibility and Installation Voltage Compatibility: 48V is the standard voltage for telecom base stations, so the battery pack's output voltage must align with base station equipment requirements. Modular Design: A modular structure simplifies installation, maintenance, and scalability.

Are lithium-ion batteries a good choice for a telecom system?

Lithium-ion batteries have rapidly gained popularity in telecom systems. Their efficiency is unmatched, providing higher energy density compared to traditional options. This means they can store more power in a smaller footprint.

What type of battery does a telecom system need?

Beyond the commonly discussed battery types, telecom systems occasionally leverage other varieties to meet specific needs. One such option is the flow battery. These batteries excel in energy storage, making them ideal for larger installations that require consistent power over extended periods.

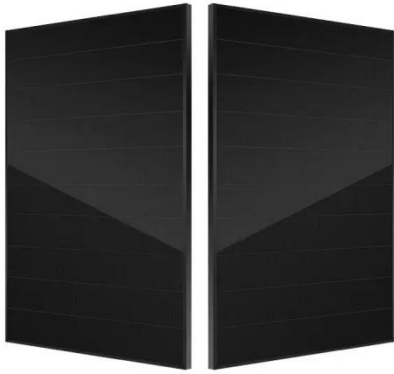
What is a cellular communication base station?

A cellular communication base station is an apparatus for transmitting and receiving electromagnetic waves in the radiofrequency (RF) range and it is the site through which cellular devices communicate with communication systems deployed throughout the world.

Why do telecom systems need batteries?

Telecom systems play a crucial role in keeping our world connected. From mobile phones to internet service providers, these networks need reliable power sources to function smoothly. That's where batteries come into play. They ensure that communication lines remain open, even during outages or emergencies. But not all batteries are created equal.

What kind of battery does a communication base station usually ha



Telecom Base Station Backup Power Solution: Design Guide for ...

Among various battery technologies, Lithium Iron Phosphate (LiFePO4) batteries stand out as the ideal choice for telecom base station backup power due to their high safety, ...

[Get a quote](#)

Battery technology for communication base stations

In order to ensure the reliability of communication, 5G base stations are usually equipped with lithium iron phosphate cascade batteries with high energy density and high charge and ...



[Get a quote](#)



What is a base station energy storage battery? , NenPower

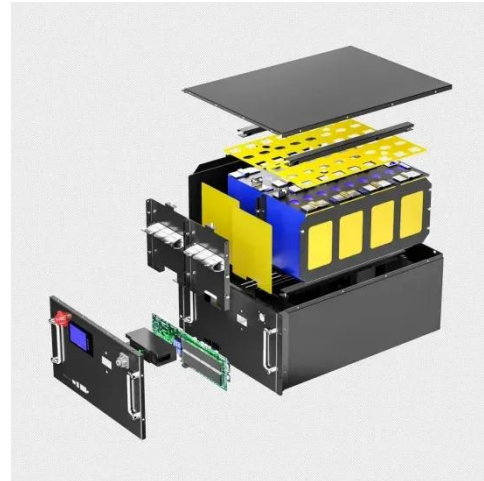
Base station energy storage batteries play a pivotal role in modern telecommunication networks, particularly as demand for uninterrupted service intensifies. ...

[Get a quote](#)

Telecom Battery Backup System , Sunwoda Energy

A telecom battery backup system is a comprehensive portfolio of energy storage batteries used as backup power for base stations to ensure a reliable and stable power supply.

[Get a quote](#)



UPS Batteries in Telecom Base Stations - leagend

In today's always-connected world, telecom base stations are the backbone of communication networks, ensuring seamless connectivity for mobile phones, data services, ...

[Get a quote](#)

Selection and maintenance of batteries for communication base stations

Focused on the engineering applications of batteries in the communication stations, this paper introduces the selections, installations and maintenances of batteries for communication ...

[Get a quote](#)



Dispatching strategy of base station backup power supply ...



capacity energy storage is proposed. The scheduling strategy reserve battery is considered when the communication traffic changes, and base station backup battery model participating in ...

[Get a quote](#)

Guide for the Selection of Communication Equipment for ...

A communication system is made up of devices that employ one of two communication methods (wireless or wired), different types of equipment (portable radios, mobile radios, base/fixed ...



[Get a quote](#)



What are base station energy storage batteries used for?

WHAT TYPE OF BATTERIES ARE USED IN BASE STATIONS? Base stations typically utilize varying types of batteries, with lead-acid batteries and lithium-ion batteries ...

[Get a quote](#)

Types of Batteries Used in Telecom Systems: A Guide

Lithium-ion batteries have rapidly gained popularity in telecom systems. Their efficiency is unmatched, providing higher energy density ...

[Get a quote](#)



Selection and maintenance of batteries for communication base ...

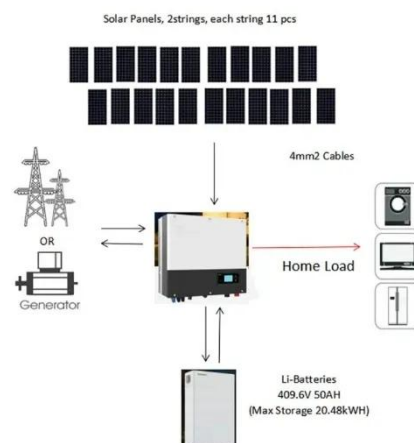
Focused on the engineering applications of batteries in the communication stations, this paper introduces the selections, installations and maintenances of batteries for communication ...

[Get a quote](#)

Understanding Backup Battery Requirements for ...

Telecom base stations require reliable backup power to ensure uninterrupted communication services. Selecting the right backup battery is ...

[Get a quote](#)



Equipment for Your Ham Radio Station

However, be aware that mobile radios



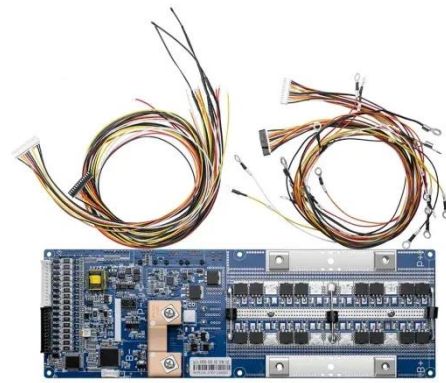
often have lower output power and limited features compared to dedicated base station radios. Equipment for beginners Beginners in ham radio ...

[Get a quote](#)

Telecom Base Station Battery

In the modern world, uninterrupted communication is critical. Our Telecom Base Station Battery Solutions are designed to provide reliable power support for ...

[Get a quote](#)



UPS Batteries in Telecom Base Stations - leagend

In today's always-connected world, telecom base stations are the backbone of communication networks, ensuring seamless connectivity for ...

[Get a quote](#)

Telecom Base Station Backup Power Solution: Design ...

Among various battery technologies, Lithium Iron Phosphate (LiFePO4) batteries stand out as the ideal choice

for telecom base station ...

[Get a quote](#)



Types of Batteries Used in Telecom Systems: A Guide

Lithium-ion batteries have rapidly gained popularity in telecom systems. Their efficiency is unmatched, providing higher energy density compared to traditional options. This ...

[Get a quote](#)

What is a base station energy storage battery?

Base station energy storage batteries play a pivotal role in modern telecommunication networks, particularly as demand for uninterrupted service ...

[Get a quote](#)



Overview of Telecom Base Station Batteries

In terms of technical realization, telecom energy storage systems usually adopt lead-acid batteries or lithium ion solar

batteries as the energy storage medium.

[Get a quote](#)



Understanding Backup Battery Requirements for Telecom Base Stations

Telecom base stations require reliable backup power to ensure uninterrupted communication services. Selecting the right backup battery is crucial for network stability and ...

[Get a quote](#)



The role of the battery pack in the communication base station

The communication base station backup power system usually consists of the battery itself and a battery management system (BMS). The BMS is the core part of the backup power system.

[Get a quote](#)

IAFF: Voice Radio Communications Guide for the Fire

Portable radios are hand-held radios powered by rechargeable or replaceable battery packs. They usually have an external rubber antenna attached to the top of the radio.

[Get a quote](#)



What Are the Critical Aspects of Telecom Base Station Backup ...

Lithium iron phosphate (LiFePO₄) batteries have become the preferred choice due to their high energy density, long cycle life, thermal stability, and safety.

[Get a quote](#)

Contact Us

For catalog requests, pricing, or partnerships, please visit:
<https://zenius.co.za>